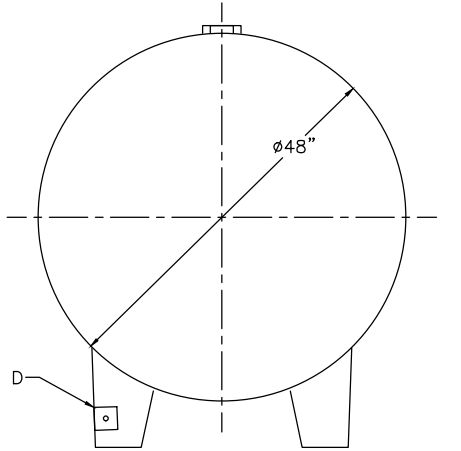


NOTE: ALL RIGHTS RESERVED. THIS DRAWING MUST NOT BE REPRODUCED IN ANY FORM WITHOUT THE WRITTEN PERMISSION OF HIGHLAND TANKS. HIGHLAND TANKS® SHALL BE RESPONSIBLE ONLY FOR ITEMS INDICATED ON THIS FABRICATION DRAWING UNLESS OTHERWISE NOTED. CUSTOMER IS RESPONSIBLE FOR VERIFYING CORRECTNESS OF SIZE AND LOCATION OF FITTINGS, ACCESSORIES, AND COATINGS SHOWN ON THIS DRAWING.

TOUCH UP OF FINISHED PAINT IS REQUIRED BY INSTALLATION CONTRACTOR. TOUCH UP PAINT SHIPPED WITH TANK.



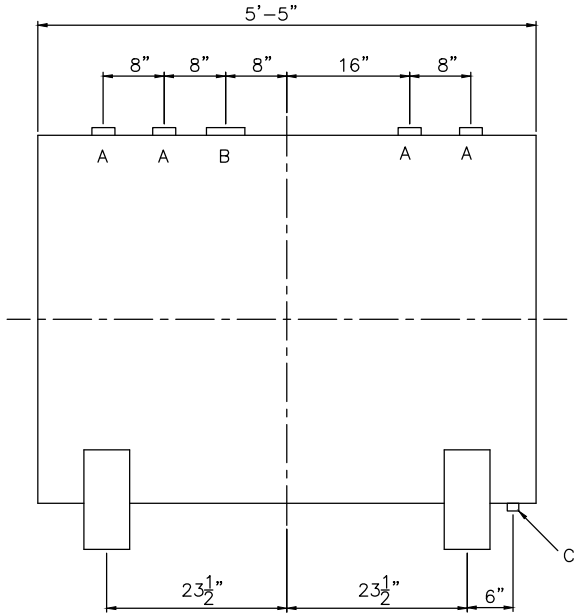
6" HIGH STD. TANK SUPPORTS
WELDED TO TANK

DESIGN DATA


CAPACITY – 500 GALLONS
TYPE – SINGLE WALL
NO. REQ. – –
OPERATING PRESSURE – ATMOSPHERIC
SPECIFIC GRAVITY = 1.0
TANK MATERIAL – MILD CARBON STEEL
THICKNESS – HEADS: 7 GAUGE
THICKNESS – SHELL: 7 GAUGE
CONSTRUCTION – LAP WELD OUTSIDE ONLY
TANK TEST – 5 PSIG
INT. FINISH – 5 WEIGHT OIL SLURRY
EXT. FINISH – SHOP PRIMER
LABEL – UL 142

LEGEND

A	2" FITTING
B	4" FITTING
C	1/2" FITTING WITH STEEL PLUG
D	3" x 3" PLATE w/ 1/2"Ø (MIN.) HOLE ON CENTER (GROUNDING LUG—ONE REQ'D)
E	–
F	–



TANK INTERIOR MUST BE CLEAN, DRY, AND DEBRIS FREE

		Highland Tank®	
500 GAL 48"Ø SW BDH LUBE TANK			
CUSTOMER:			
PROJECT:			
QUOTE NO:		CHK'D BY:	
SCALE: 3/4" = 12"	DATE:	DWG. BY:	DWG. NO: 00500LBDHSW48GA7