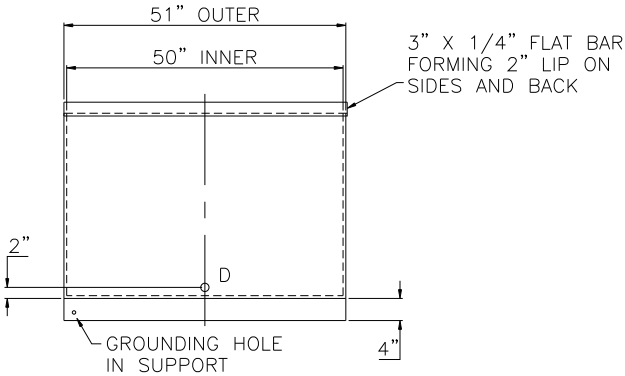
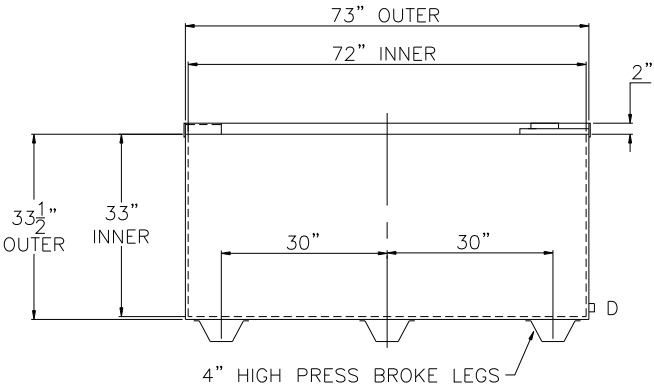
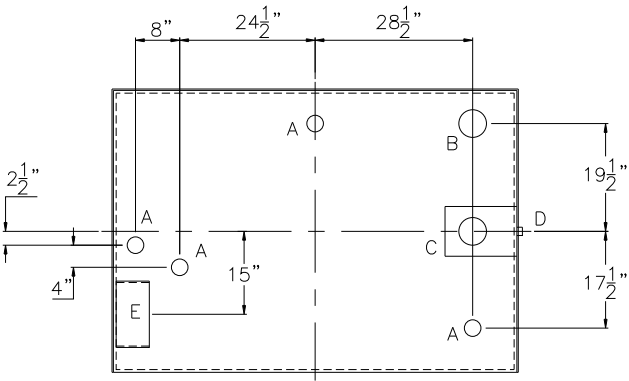
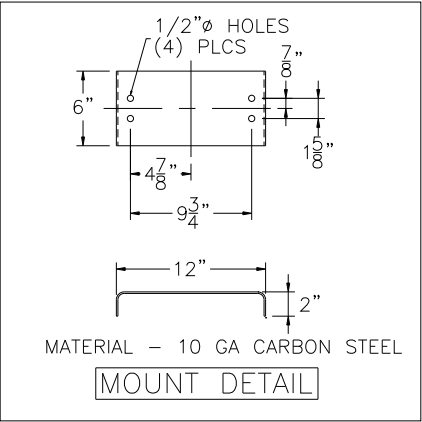


NOTE: ALL RIGHTS RESERVED. THIS DRAWING MUST NOT BE REPRODUCED IN ANY FORM WITHOUT THE WRITTEN PERMISSION OF HIGHLAND TANK. HIGHLAND TANK SHALL BE RESPONSIBLE ONLY FOR ITEMS INDICATED ON THIS FABRICATION DRAWING UNLESS OTHERWISE NOTED. CUSTOMER IS RESPONSIBLE FOR VERIFYING CORRECTNESS OF SIZE AND LOCATION OF FITTINGS, ACCESSORIES, AND COATINGS SHOWN ON THIS DRAWING.

TOUCH UP OF FINISHED PAINT IS REQUIRED BY INSTALLATION CONTRACTOR. TOUCH UP PAINT SHIPPED WITH TANK.

SHIP LOOSE: (INSTALLATION ON SITE BY OTHERS)
1/2" BUTTON SIGHT GLASS



DESIGN DATA

CAPACITY - 500 GALLONS
TYPE - DOUBLE WALL - TYPE I
NO. REQ. - -
OPERATING PRESSURE - ATMOSPHERIC
SPECIFIC GRAVITY = 1.0
TANK MATERIAL - MILD CARBON STEEL
THICKNESS - ALL - 12 GAUGE
CONSTRUCTION - LAP WELD OUTSIDE ONLY DOUBLE WALL SIDES AND BOTTOM SINGLE WALL TOP
TANK TEST - INNER - 2 PSIG OUTER - 2 PSIG AND FULL VACUUM
INT. FINISH - NONE
EXT. FINISH - SHOP PRIMER
LABEL - UL 142 MAX TOP LOAD 60#

LEGEND

A	2" FNPT CONNECTION
B	4" FNPT CONNECTION
C	4" FNPT CONNECTION MOUNTED IN INTERSTICE EXTENSION BOX - MARK WITH LABEL SECONDARY EMERGENCY VENT USE ONLY
D	1/2" FNPT CONNECTION THROUGH OUTER SHELL ONLY WITH BUTTON SITE GLASS
E	MOUNT PER DETAIL
F	-

REFERENCE DRAWINGS

PRESS BRAKE - DWG 21946A
LEG DETAIL - DWG WBLEG

		Highland Tank®	
500 GAL DW BENCHTOP LUBE			
CUSTOMER:			
PROJECT:			
QUOTE NO:		CHK'D BY:	
SCALE: 1/2" = 12"	DATE:	DWG. BY:	DWG. NO: 00500BTDW