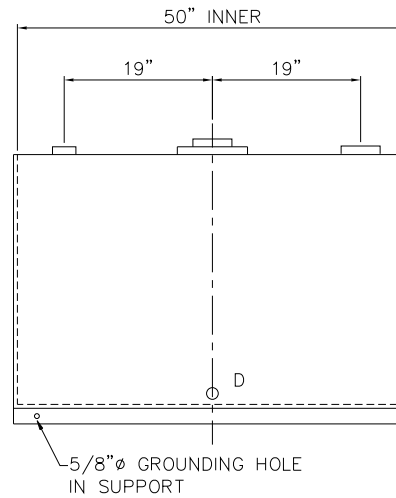
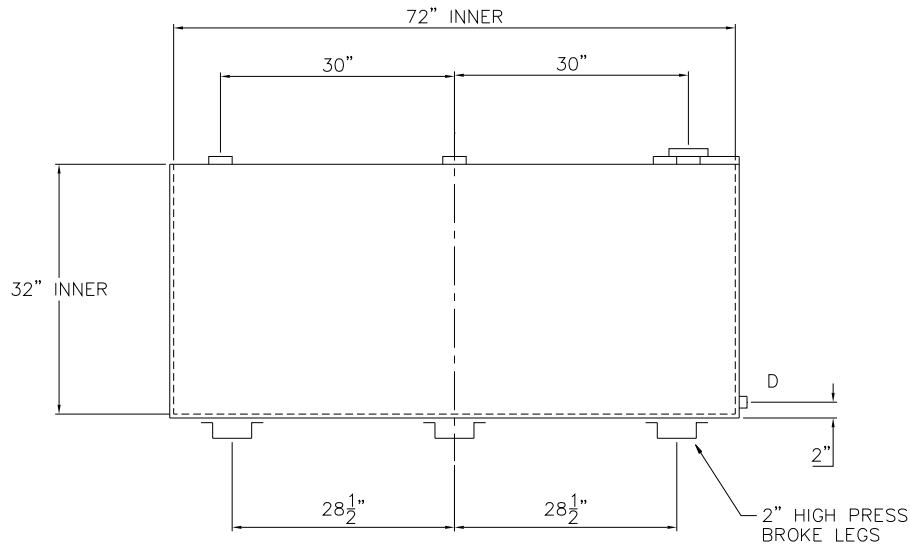
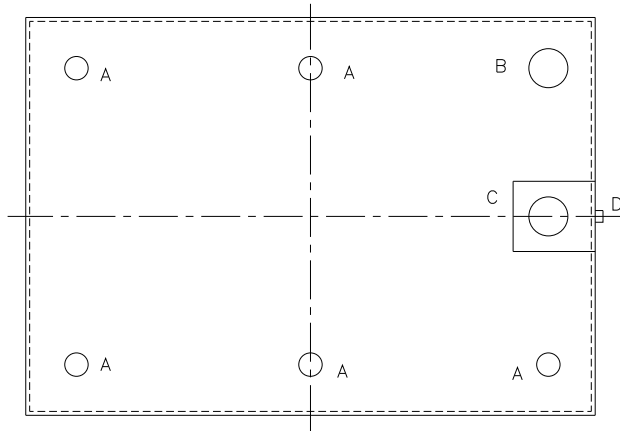


NOTE: ALL RIGHTS RESERVED. THIS DRAWING MUST NOT BE REPRODUCED IN ANY FORM WITHOUT THE WRITTEN PERMISSION OF HIGHLAND TANK®. HIGHLAND TANK® SHALL BE RESPONSIBLE ONLY FOR ITEMS INDICATED ON THIS FABRICATION DRAWING UNLESS OTHERWISE NOTED. CUSTOMER IS RESPONSIBLE FOR VERIFYING CORRECTNESS OF SIZE AND LOCATION OF FITTINGS, ACCESSORIES, AND COATINGS SHOWN ON THIS DRAWING.

TOUCH UP OF FINISHED PAINT IS REQUIRED BY INSTALLATION CONTRACTOR. TOUCH UP PAINT SHIPPED WITH TANK.



DESIGN DATA

CAPACITY	500 GALLONS
TYPE	DOUBLE WALL - TYPE I
NO. REQ.	-
OPERATING PRESSURE	ATMOSPHERIC
SPECIFIC GRAVITY	= 1.0
TANK MATERIAL	MILD CARBON STEEL
THICKNESS - INNER	12 GAUGE
THICKNESS - OUTER	12 GAUGE
CONSTRUCTION - INNER	LAP WELD OUTSIDE ONLY
CONSTRUCTION - OUTER	LAP WELD OUTSIDE ONLY
TANK TEST - INNER	2 PSIG
TANK TEST - OUTER	2 PSIG AND FULL VACUUM
INT. FINISH	NONE
EXT. FINISH	SHOP PRIMER
LABEL	UL 142

LEGEND

A	2" FITTING
B	4" FITTING (PRIMARY VENT USE)
C	4" FITTING IN INTERSTICE EXTENSION BOX MARK WITH SPECIAL LABEL - INTERSTITIAL EMERGENCY VENT USE ONLY
D	1/2" FITTING THROUGH OUTER SHELL ONLY WITH BUTTON SITE GLASS
E	-
F	-

		Highland Tank®	
500 GAL DW LUBE TANK (S-STYLE)			
CUSTOMER:			
PROJECT:			
QUOTE NO:		CHK'D BY:	
SCALE: 3/4" = 12"	DATE:	DWG. BY:	DWG. NO: 00500LDWS