

NOTE :  
ALL RIGHTS RESERVED. THIS DRAWING OR ANY PART THEREOF MUST NOT BE REPRODUCED IN ANY FORM WITHOUT THE WRITTEN PERMISSION OF HIGHLAND TANK.  
HIGHLAND TANK SHALL BE RESPONSIBLE ONLY FOR ITEMS INDICATED ON THIS FABRICATION DRAWING UNLESS OTHERWISE NOTED. CUSTOMER IS RESPONSIBLE FOR VERIFYING CORRECTNESS OF SIZE / LOCATION OF FITTINGS , ACCESSORIES & COATINGS SHOWN ON THIS DRAWING

NOTE: ALL DIMENSIONS IN INCHES UNLESS NOTED OTHERWISE

### GENERAL SPECIFICATIONS

NO. REQ'D:  
MODEL: MGI-500N CS  
MAXIMUM FLOW RATE: 500 GPM  
MATERIAL: 7 GA CARBON STEEL  
SURFACE PREP:  
SSPC-SP 10 BLAST ALL SURFACES  
INT. & EXT. COATING: POLYURETHANE  
STATIC WATER CAPACITY: 506 GAL  
GREASE HOLDING CAPACITY: 1,000 LBS  
APPROX. DRY WEIGHT: 500 LBS

### GENERAL NOTES

- ALL PLUMBING CONNECTIONS ARE SUBJECT TO LOCAL CODES

GASKET & BOLT-ON DECKPLATE COVERS W/ RECESSED LIFTING EYES  
PAINTED BLACK - \*\*\*FOOT TRAFFIC ONLY\*\*\*  
H-20 RATED COVERS AVAILABLE AS OPTION

CLEANOUT WITH PLUG

6" NO-HUB INLET  
W/ FLOW CONTROL

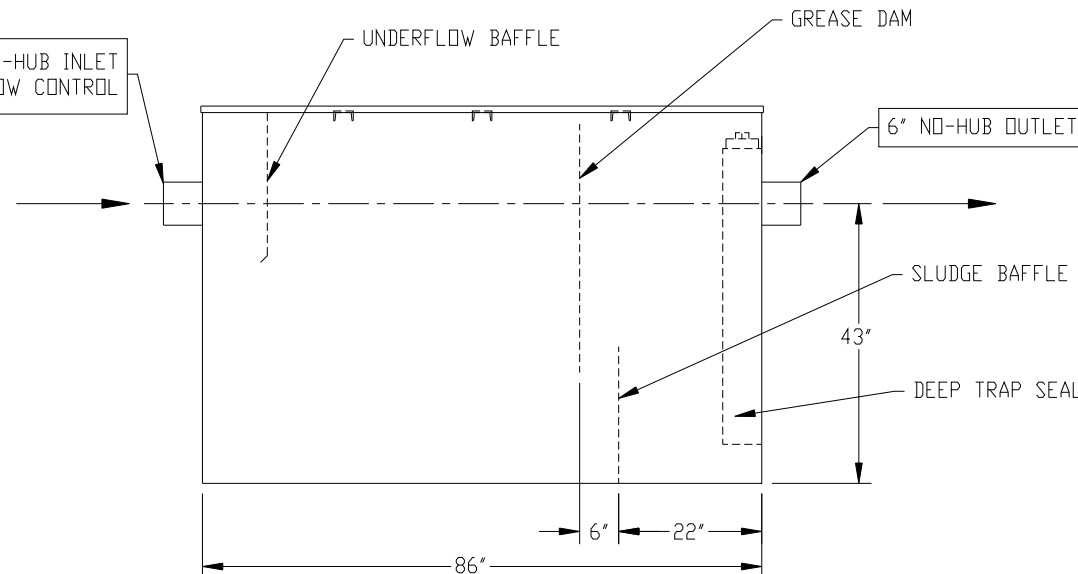
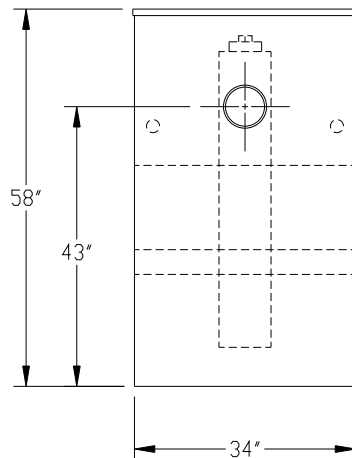
UNDERFLOW BAFFLE

GREASE DAM

6" NO-HUB OUTLET

SLUDGE BAFFLE

DEEP TRAP SEAL



### REVISIONS



**Highland Tank®**

MANUAL GREASE INTERCEPTOR  
MGI-500N CS

CUSTOMER:

PROJECT:

QUOTE NO:

CHK'D BY:

SCALE: DATE:

DWG BY:

DWG NO:

MGI-500N CS