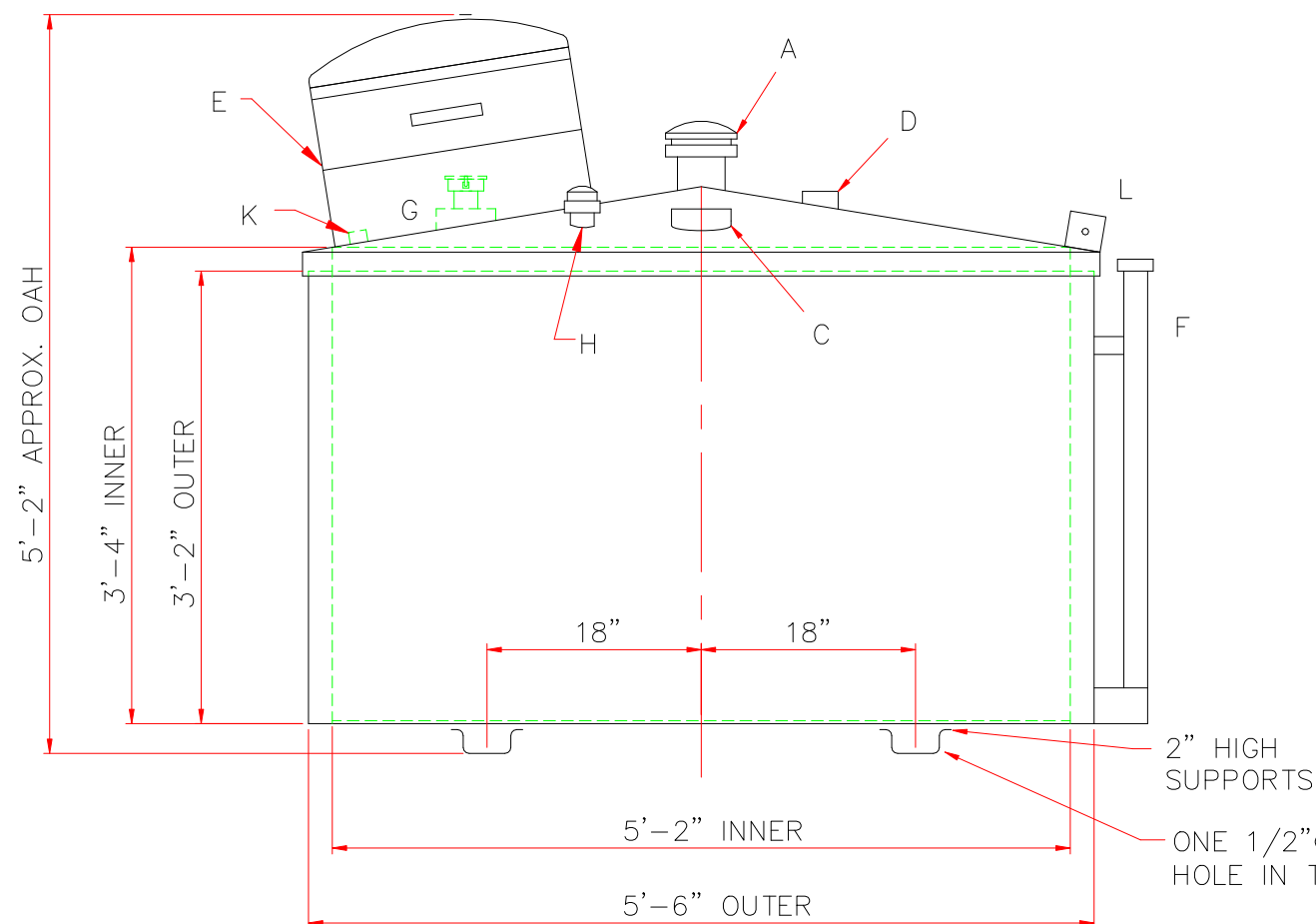
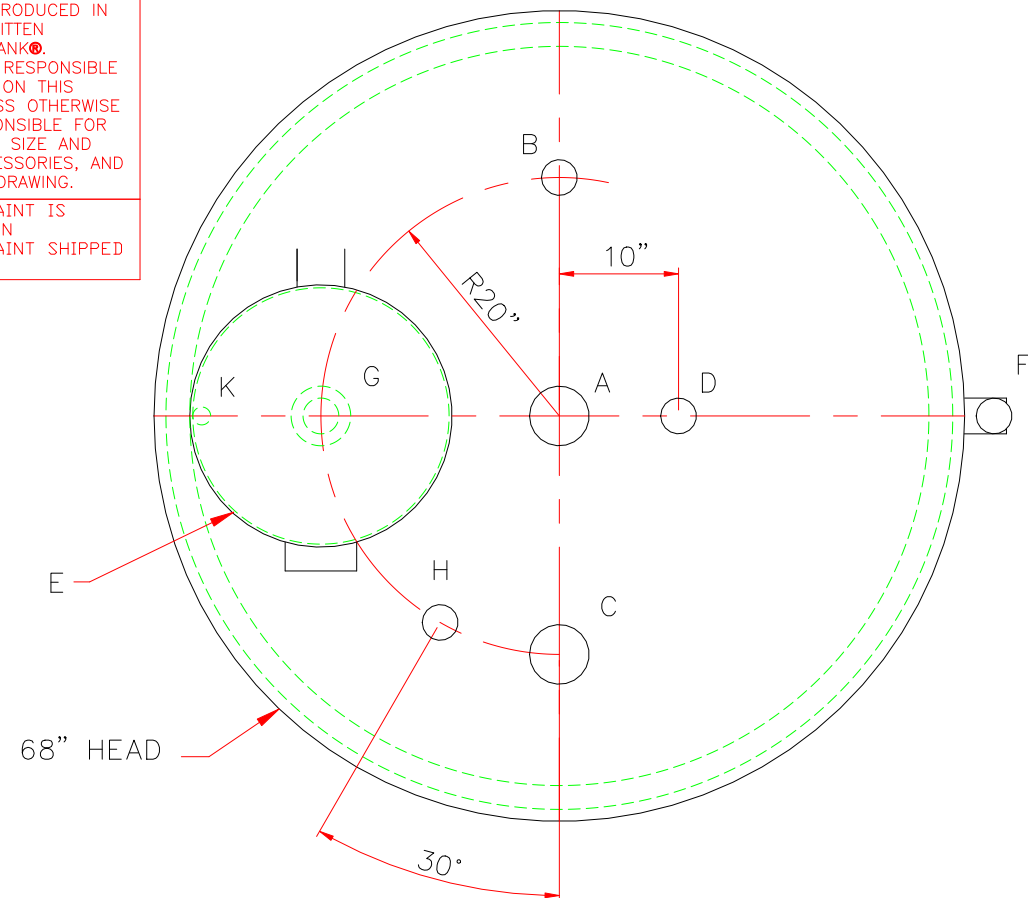


TOUCH UP OF FINISHED PAINT IS
REQUIRED BY INSTALLATION
CONTRACTOR. TOUCH UP PAINT SHIPPED
WITH TANK.

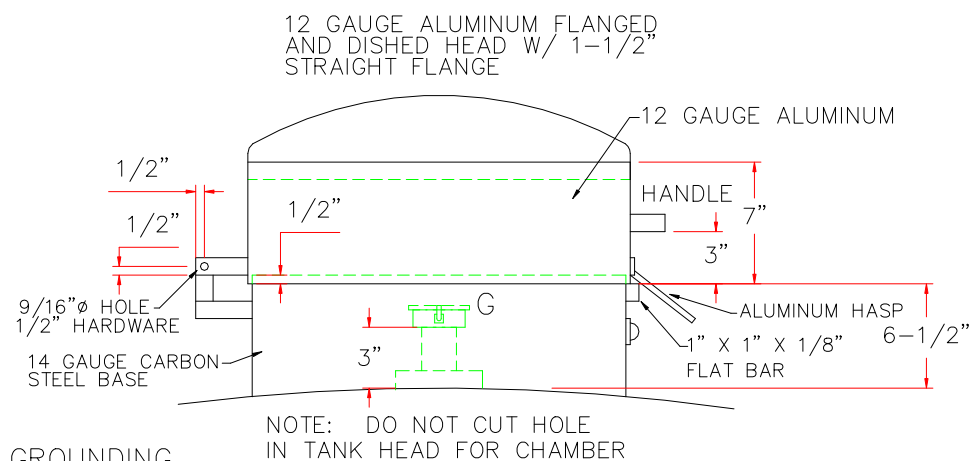
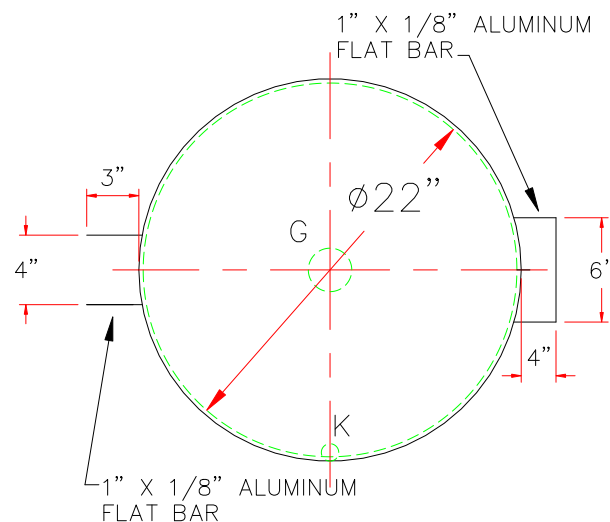


DESIGN DATA	LEGEND	
CAPACITY –500 GALLONS	A	4" HALF COUPLING (EMERGENCY VENT USE)
NO. REQ. – –	B	2" HALF COUPLING (SUCTION)
OPERATING PRESSURE –ATMOSPHERIC	C	4" COUPLING (SPARE)
SPECIFIC GRAVITY = 1.0	D	2" HALF COUPLING (NORMAL VENT)
TANK MATERIAL – MILD CARBON STEEL	E	22"Ø CHAMBER WITH HINGED ALUMINUM LID SEE DETAIL E APPROXIMATE CHAMBER CAPACITY 7 GAL ACCESS TO FILL
THICKNESS – TOP: 10 GA FLANGED CONE OR STD. FLANGED & DISHD	F	2" MONITOR PIPE
THICKNESS – BALANCE OF TANK– 12 GA	G	4" HALF COUPLING WITH 4" x 2" DOUBLE TAPPED BUSHING W/2" CLOSE NIPPLE & 2" LOCKING FILL CAP
CONSTRUCTION – TANK – LAP WELD OUTSIDE ONLY (INNER TANK IS NOT ATTACHED TO OUTER TUB)	H	2" HALF COUPLING (GAUGE)
CONSTRUCTION– TUB – LAP WELD OUTSIDE ONLY	J	–
TANK TEST – TANK ONLY – 5 PSIG	K	1/2" FITTING w/PLUG – PLACE INSIDE CHAMBER AS CLOSE AS POSSIBLE TO EDGE – CHAMBER DRAIN
TUB TEST – TUB ONLY – WATERTIGHT	L	3" x 3" PLATE w/ 1/2"Ø HOLE (MIN.) HOLE ON CENTER (GROUNDING LUG – ONE REQ'D ON THE LID), HTM SHOP TO DRILL ONE 1/2"Ø IN THE TANK SUPPORT.
FINISH – TUB – INSIDE AND OUT – SHOP PRIMER		
FINISH – TANK – INTERIOR – NONE		
FINISH – TANK – EXTERIOR – SAME AS TUB		
LABEL – UL 142 – APPLY LABEL ON TOP OF TANK		
TANK SUPPORT – 10 GA x 4" WIDE x 2" DEEP PRESSBRAKE "U" PATTERN		

1" X 1/8" ALUMINUM
FLAT BAR

SHIP LOOSE: (INSTALLATION BY OTHERS)

- (1) GAUGE
(1) 2"Ø x 96" LONG GALVANIZED PIPE (T.B.E.)
(1) 2"Ø MUSHROOM VENT
(1) 4" EMERGENCY VENT



DETAIL E

