

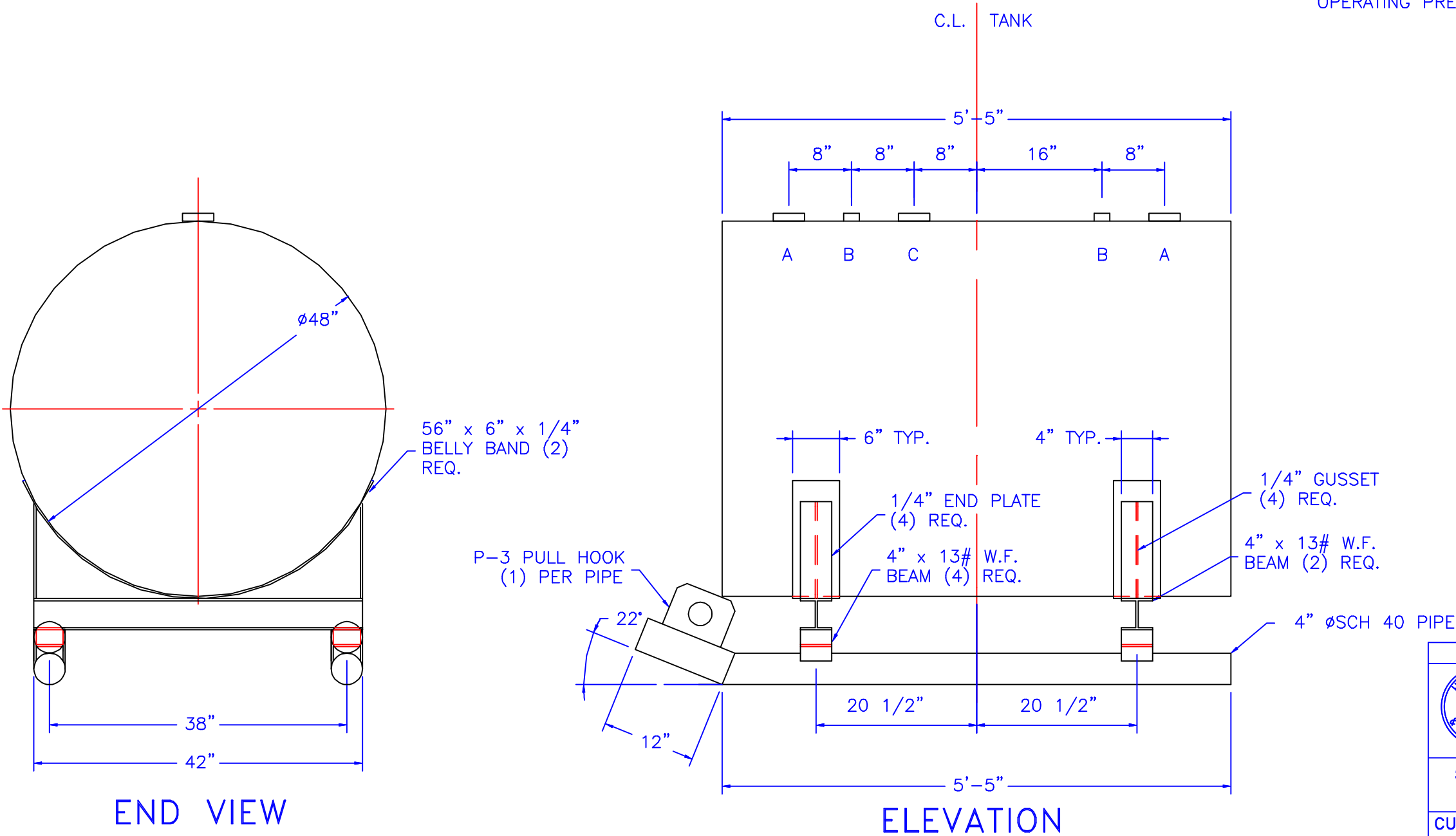
NOTE :  
ALL RIGHTS RESERVED. THIS DRAWING OR ANY PART THEREOF MUST NOT BE REPRODUCED IN ANY FORM WITHOUT THE WRITTEN PERMISSION OF HIGHLAND TANK.  
HIGHLAND TANK SHALL BE RESPONSIBLE ONLY FOR ITEMS INDICATED ON THIS FABRICATION DRAWING UNLESS OTHERWISE NOTED. CUSTOMER IS RESPONSIBLE FOR VERIFYING CORRECTNESS OF SIZE / LOCATION OF FITTINGS , ACCESSORIES & COATINGS SHOWN ON THIS DRAWING

FITTING SCHEDULE

- A= 4" Ø NPT
- B= 2" Ø NPT
- C= 4" Ø NPT (EMERGENCY VENT)

GENERAL NOTES

CAPACITY : 500 GALLONS  
TYPE : SINGLE WALL, ABOVEGROUND, HEAVY DUTY SKID  
NO. REQ. :  
MATERIAL : MILD CARBON STEEL  
TEST : 5 P.S.I.  
MIN. GAUGE OR THICKNESS (PER U.L. 142):  
HEADS : 7 GA.  
SHELL : 7 GA.  
PAINT :  
INTERIOR : NONE  
EXTERIOR : RED PRIMER  
CONSTRUCTION : FLAT FLANGED HEADS, LAP WELD ALL EXTERIOR SEAMS ONLY  
APPROVED LABELS : U.L. 142  
OPERATING PRESSURE ATMOSPHERIC:



REVISIONS			
		<h1>Highland Tank</h1>	
500 GALLON ABOVEGROUND HORIZONTAL SINGLE WALL HEAVY DUTY SKID			
CUSTOMER:			
PROJECT:			
QUOTE NO:		CHK'D BY:	
SCALE:	DATE:	DWG. BY:	DWG. NO.:
3/4"=1'-0"	6-4-99		0500SWHDSK7

Highland Tank

500 GALLON ABOVEGROUND HORIZONTAL SINGLE WALL HEAVY DUTY SKID