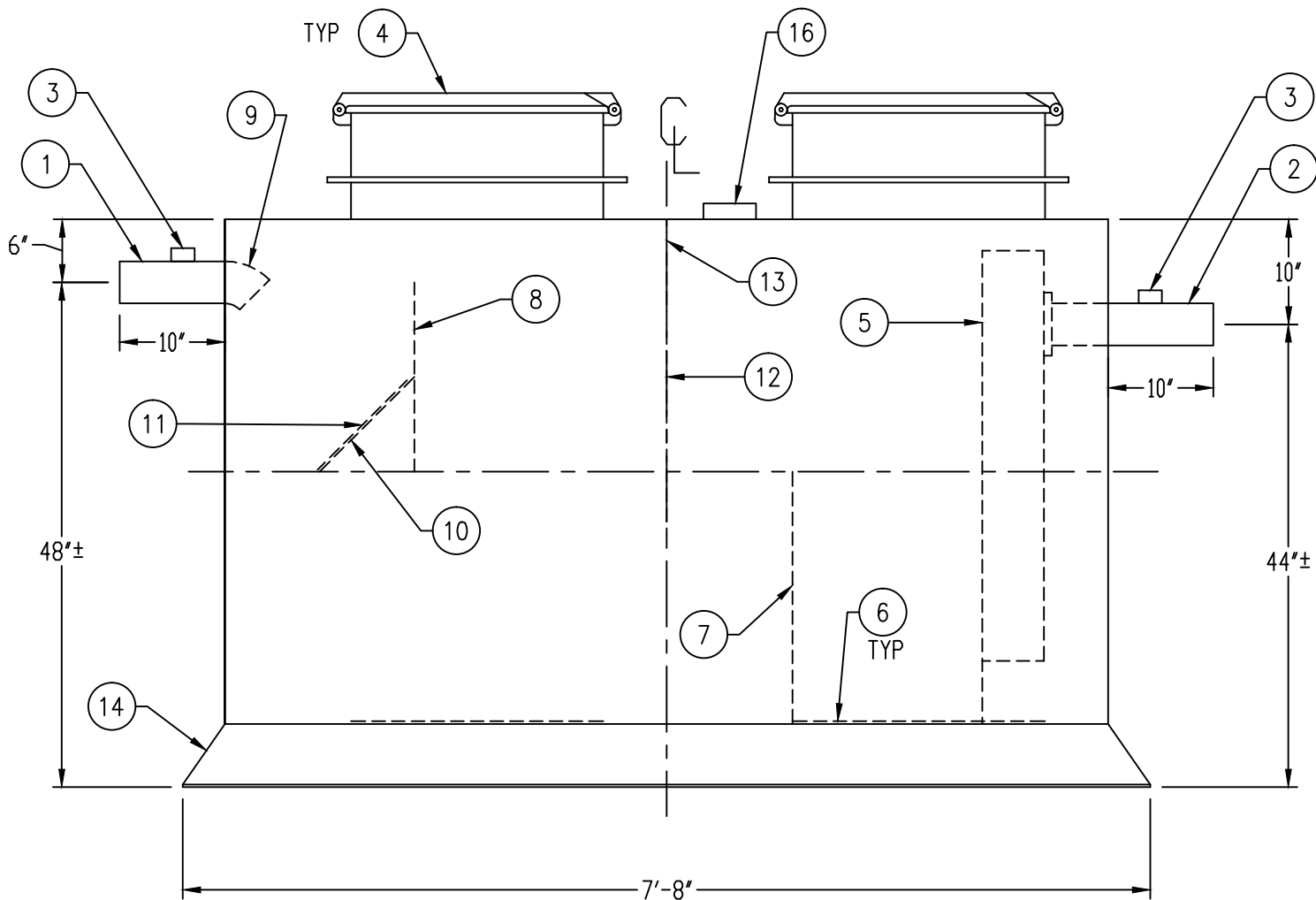
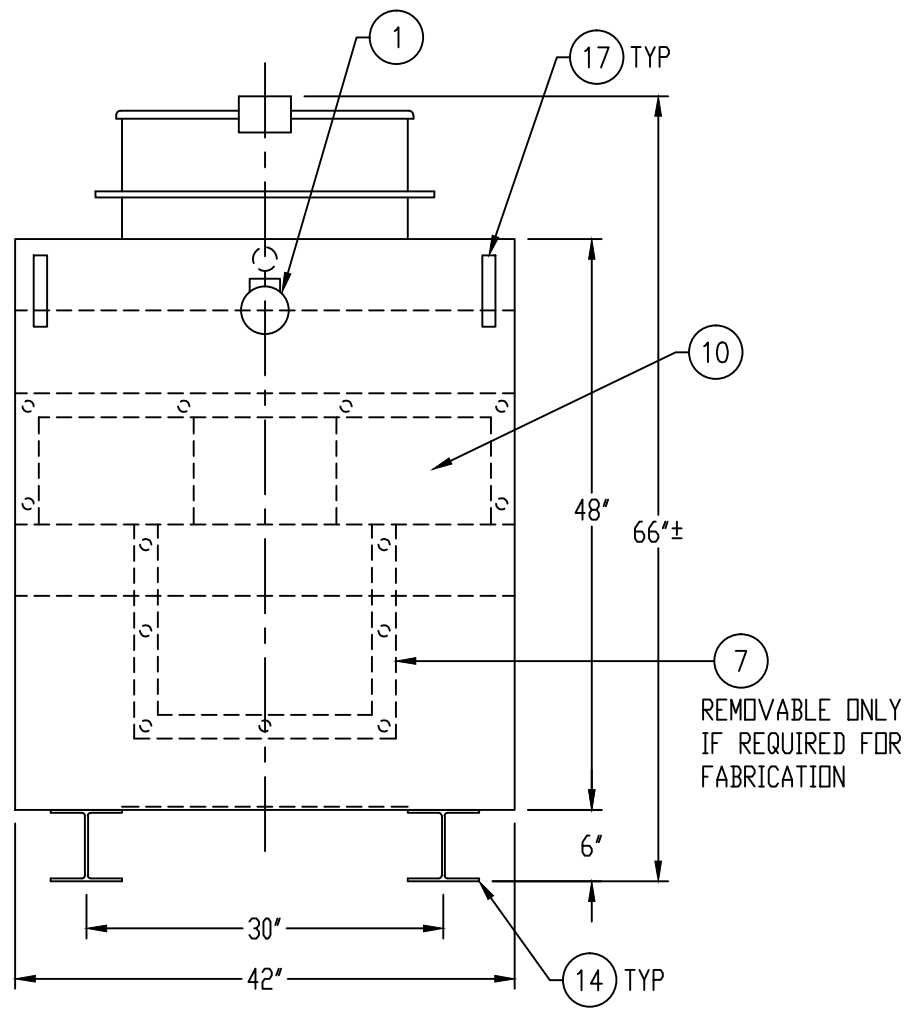
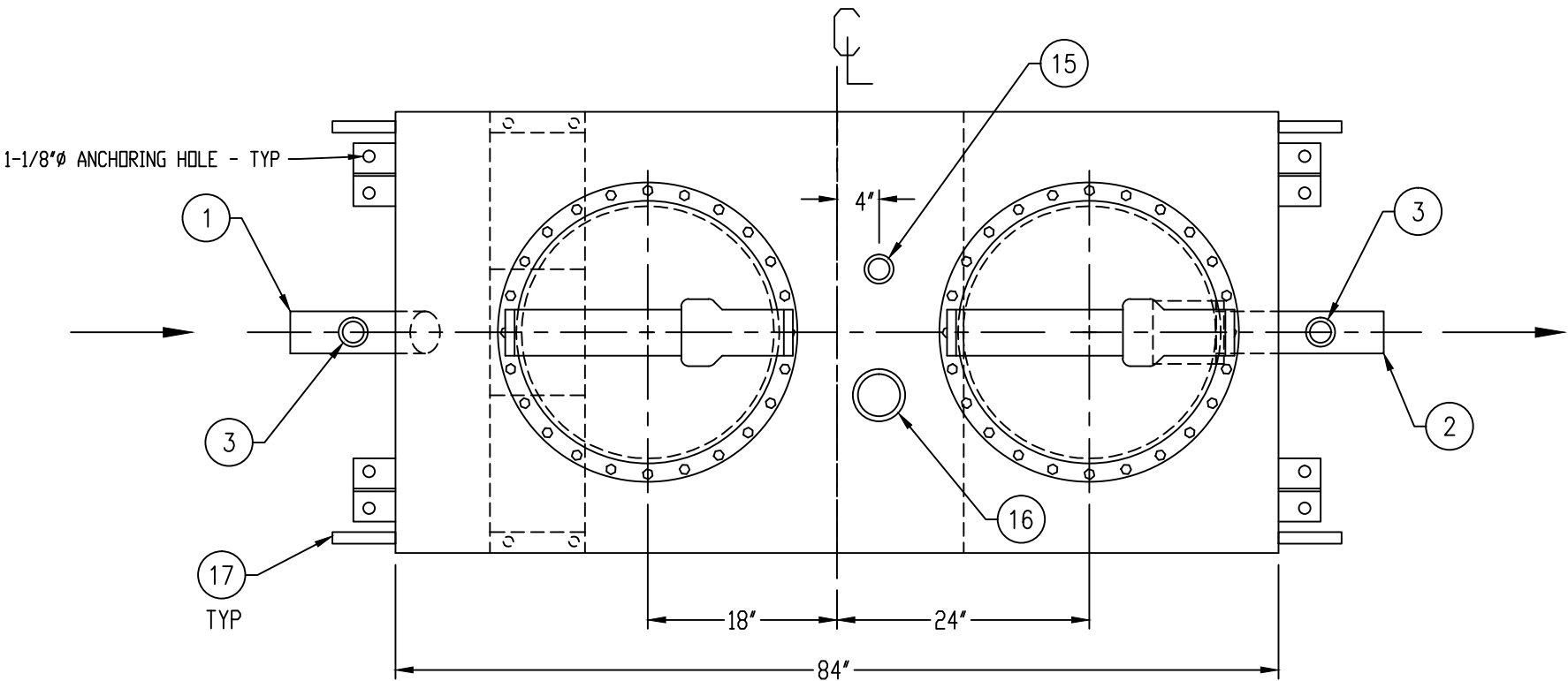


NOTE:
ALL RIGHTS RESERVED. THIS DRAWING, OR ANY PART THEREOF, MUST NOT BE REPRODUCED IN ANY FORM WITHOUT WRITTEN PERMISSION FROM HIGHLAND TANK. UNLESS OTHERWISE NOTED, HIGHLAND TANK SHALL BE RESPONSIBLE ONLY FOR ITEMS INDICATED ON THIS FABRICATION DRAWING. THE CUSTOMER IS RESPONSIBLE FOR VERIFYING THE CORRECTNESS OF THE TYPE, SIZE, AND LOCATION OF ALL FITTINGS, ACCESSORIES, AND COATINGS SHOWN ON THIS DRAWING.



GENERAL SPECIFICATIONS

MODEL: PGI-550-2 AR
CAPACITY: 550 GALLONS
TYPE: SINGLE WALL, ABOVEGROUND
MATERIAL: 7 GA CARBON STEEL
LAP-FIT AND WELD ALL INT. AND EXT. SEAMS
INTERIOR STRUCTURAL BRACING AS REQUIRED BY
HIGHLAND TANK ENGINEERING DEPARTMENT
SURFACE PREP: SSPC-SP 10 INT. BLAST
SSPC-SP 6 EXT. BLAST
EXT. COATING: WHITE URETHANE - 3-5 MILS
INT. COATING: CHEMTHANE 4200PW (15 MILS DFT)
OPERATING PRESSURE: ATMOSPHERIC

PROVIDED EQUIPMENT

1. 4" ϕ SCH 40 PIPE STUB - INLET
2. 4" ϕ SCH 40 PIPE STUB - OUTLET
3. 2" HC - VENT
4. 24" ϕ MANWAY WITH FLANGED EASY-ACCESS HATCH
5. STEEL OUTLET DOWNCOMER BAFFLE WITH OPEN TOP
6. STRIKER PLATE
7. SLUDGE BAFFLE - 7 GA
8. UNDERFLOW BAFFLE - 7 GA
9. 4" ϕ 45° DIFFUSION ELBOW
10. REMOVABLE DIFFUSION PLATE - 7 GA
11. 12" x 12" WEAR PLATE - 1/4"
12. GREASE DAM - 7 GA
13. 2" OPENING FOR AIR CIRCULATION
14. (2) W6x15 BEAM RUNNER WITH (2) 1-1/8" HOLES AT EACH TAPERED END FOR ANCHORING
15. 2" HC - NORMAL TANK VENT
16. 4" HC FOR EMERGENCY VENT
17. LIFTING LUGS PER FABRICATION SHOP

THIS DRAWING IS SUBJECT TO CHANGE AT THE DISCRETION OF THE MANUFACTURER. CONTACT HIGHLAND TANK FOR THE MOST UP-TO-DATE INFORMATION AND DRAWINGS OF OUR PRODUCTS.



PASSIVE GREASE INTERCEPTOR
550 GALLON DOUBLE-BASIN

CUSTOMER:

PROJECT:

QUOTE NO.:

SCALE:

DATE:

DWG. BY:

DWG. NO.:

ORDER:

DIMENSION TOLERANCE: $\pm 1"$

NTS

2/15/18

MGS

PGI-550-2 AR