

GENERAL SPECIFICATIONS

NO. REQ'D: (1)
CAPACITY: 550 GALLONS
TYPE: UNDERGROUND, SINGLE WALL, HIGHGUARD
TRIPLE BASIN OIL SAND INTERCEPTOR TANK
MATERIAL: MILD CARBON STEEL
FLOW RATE: 55 GPM
GAUGE: BASED ON 60" BURIAL
SHELL— 7 GA.
HEADS— 7 GA.
SURFACE PREP:
SSPC NO.6 BLAST ALL EXTERIOR SURFACES

COATING:	MATERIAL	THICKNESS
EXTERIOR—	POLYURETHANE	(75 MILS)
INTERIOR—	NONE	

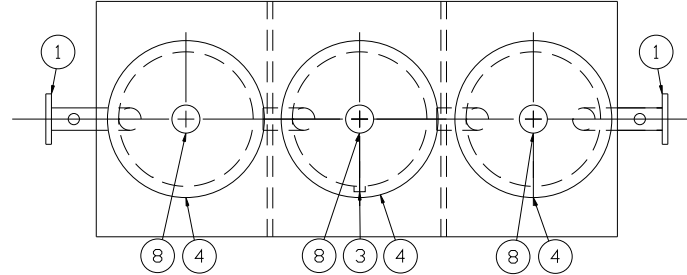
OPERATING PRESSURE: ATMOSPHERIC

NOTES

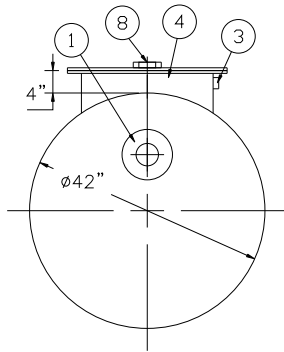
1. POLYURETHANE HIGHGUARD TANK IS NOT APPROVED FOR THE STORAGE OF HEATED PRODUCTS
2. ALL VENT PIPING BY INSTALLER
3. 15000 VOLT SPARK TEST PROVIDED AT FACTORY

PROVIDED EQUIPMENT

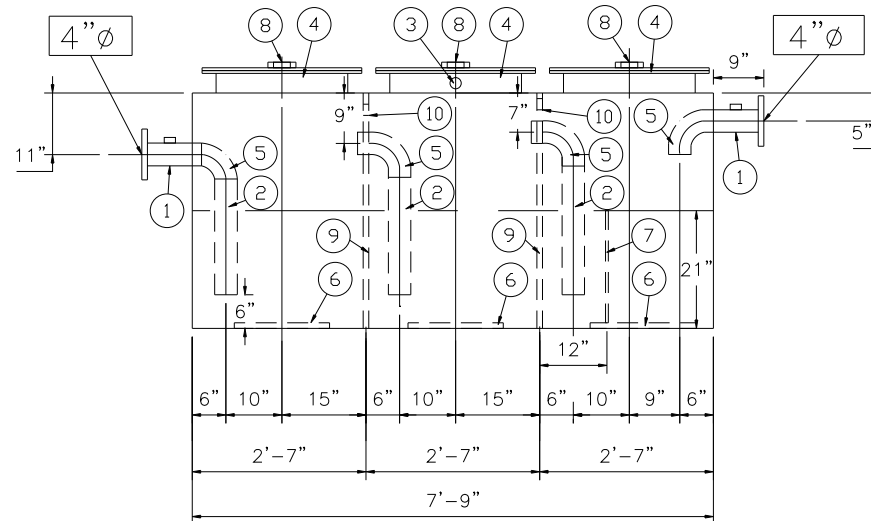
1. 150# R.F.S.O. FLANGE W/ 2" ϕ FNPT FTG. FOR VENT
2. STEEL DOWNCOMER PIPE
3. 2" ϕ FNPT FTG. FOR VENT
4. 24" ϕ MANHOLE
5. 4" ϕ STEEL ELBOW
6. STRIKER PLATES
7. SLUDGE BAFFLE
8. 4" ϕ FNPT FTG. FOR GAUGE
9. 42" ϕ x 7GA. BULKHEAD
10. 2" ϕ OPENING IN BULKHEAD FOR VENTING



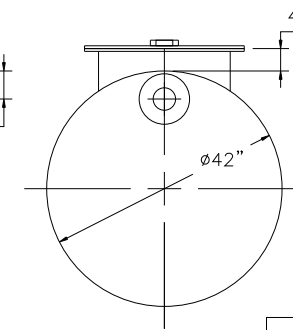
PLAN VIEW



END VIEW



ELEVATION



END VIEW

REVISIONS



Highland Tank

550 GALLON TRIPLE BASIN INTERCEPTOR
SINGLE WALL, HIGHGUARD

CUSTOMER:

PROJECT:

QUOTE NO:

CHK'D BY:

SCALE:
1/2"=1'-0"

DATE:
8-17-05

DWG. BY:

DWG. NO.:

00550HGSWINTTB

UNLESS OTHERWISE SPECIFIED DIMENSIONS ARE IN INCHES
TOLERANCES ARE + OR - 1"

NOTE :
ALL RIGHTS RESERVED. THIS DRAWING OR ANY PART THEREOF MUST NOT BE REPRODUCED IN ANY FORM WITHOUT THE WRITTEN PERMISSION OF HIGHLAND TANK.
HIGHLAND TANK SHALL BE RESPONSIBLE ONLY FOR ITEMS INDICATED ON THIS FABRICATION DRAWING UNLESS OTHERWISE NOTED. CUSTOMER IS RESPONSIBLE FOR VERIFYING CORRECTNESS OF SIZE / LOCATION OF FITTINGS , ACCESSORIES & COATINGS SHOWN ON THIS DRAWING