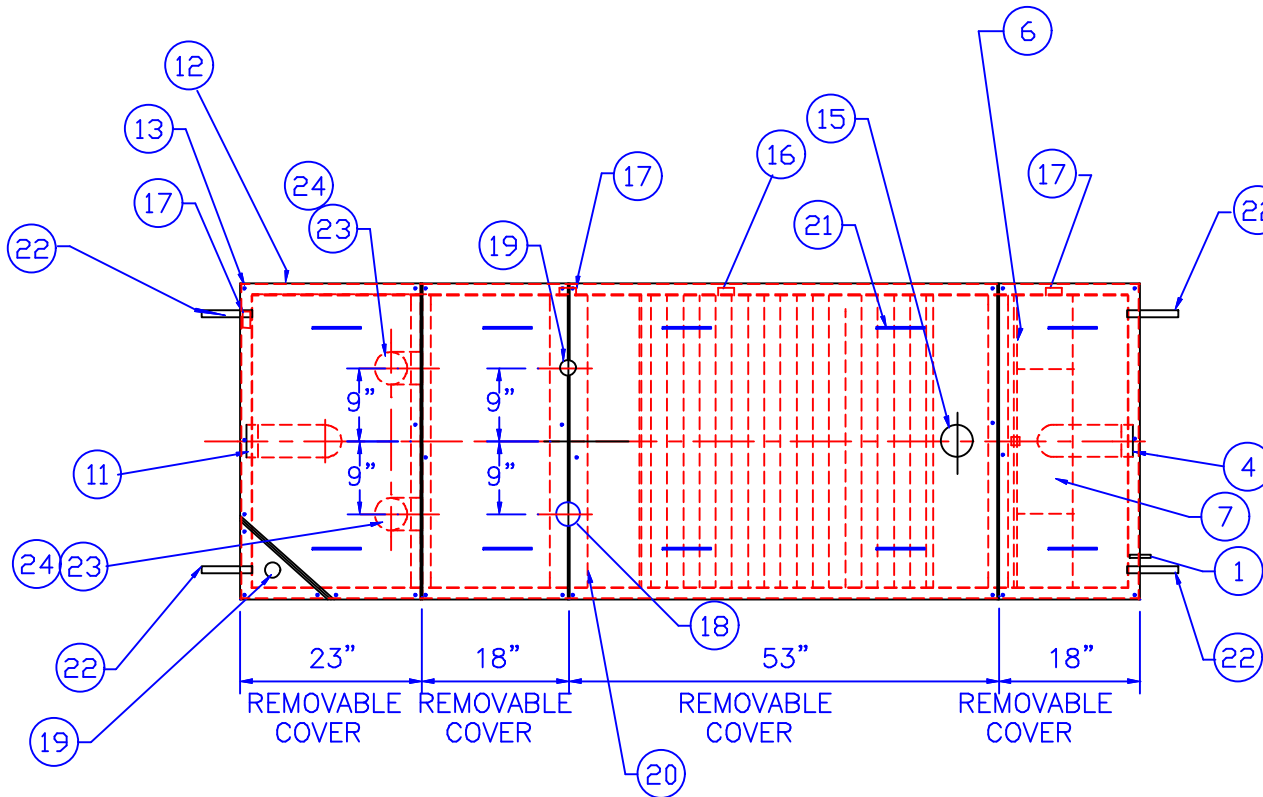


GENERAL SPECIFICATIONS

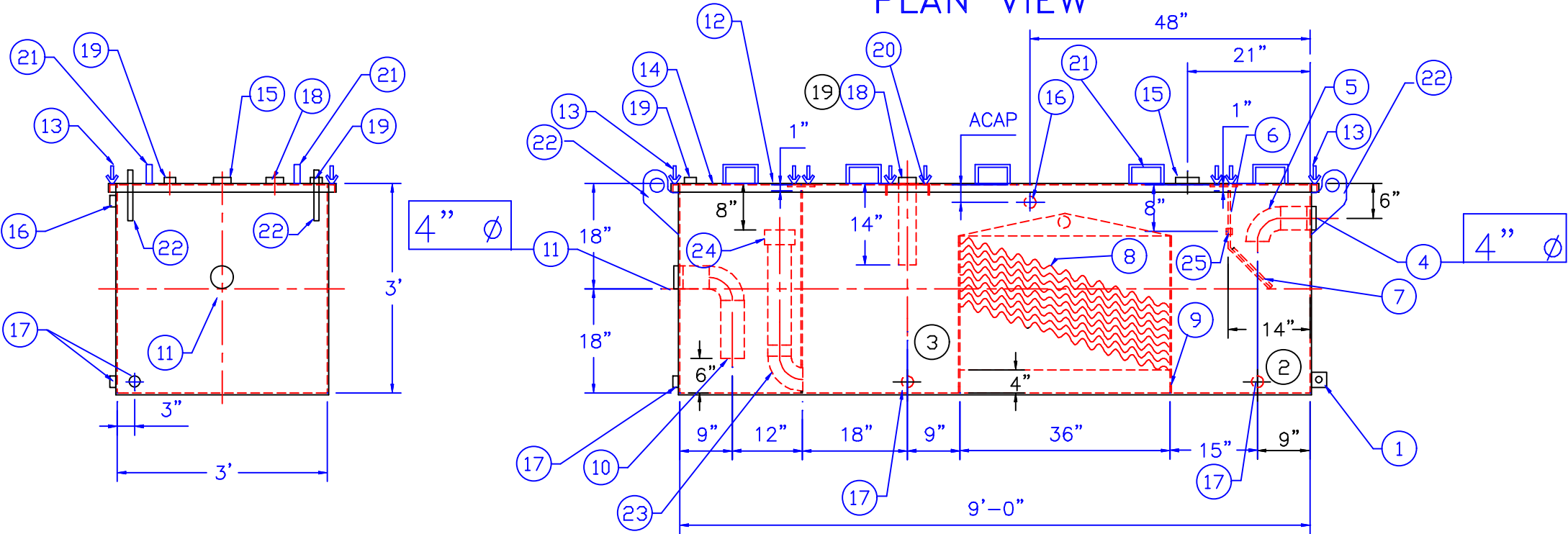
NO. REQ'D: (1)
CAPACITY: 600 GALLONS
SPILL CAPACITY: 200 GALLONS
TYPE: RECTANGULAR, HT, ABOVEGROUND, SINGLE WALL
MATERIAL: MILD CARBON STEEL
APPROX. WEIGHT: 2000 LBS.
FLOW RATE: 50 GPM
GAUGE:
7 GA THROUGHOUT

SURFACE PREP:
SSPC NO.10 BLAST ALL INTERIOR SURFACES
SSPC NO.6 BLAST ALL EXTERIOR SURFACES
COATING: MATERIAL THICKNESS
EXTERIOR- FINISH PAINT WHITE (3 MILS)
INTERIOR- POLYURETHANE (15 MILS)
CONSTRUCTION:
BUTT FIT AND WELD ALL CORNERS IN & OUT

NOTE:
1. ALL INTERNAL MATERIAL IS 10 GA.
2. ALL FITTINGS MUST SHIP W/ STEEL PLUGS INSTALLED
3. LIFTING LUGS DO NOT HAVE REINFORCING PLATES



PLAN VIEW



END VIEW

ELEVATION

PROVIDED EQUIPMENT

- 3"x3"x1/4" FLAT W/ 1/2"Ø HOLE DRILLED IN CENTER (GROUNDING LUG)
- SEDIMENT CHAMBER
- OIL WATER SEPARATOR CHAMBER
- THREADED INLET
- PVC INLET ELBOW PIPING
- VELOCITY HEAD DIFFUSION BAFFLE 10GA
- WEAR PLATE (1/4" MATERIAL)
- REMOVABLE PARALLEL CORRUGATED PLATE COALESCER (GALVANIZED) 1" PLATE SPACING
- SLUDGE BAFFLE - 10GA
- PVC OUTLET DOWNCOMER
- THREADED OUTLET
- REMOVABLE COVERS 4-REQUIRED (7 GA.)
- NUTS & BOLTS W/ LARGE WING (CORROSION RESISTANT)
- GASKET MATERIAL (FOR EACH REMOVABLE COVER)
- 3"Ø NPT (CLEAN-OUT)
- 2"Ø NPT (VENT)
- 2"Ø NPT (DRAIN)
- 3"Ø FULL COUPLING W/ 3" INTERNAL PVC PIPE
- 2"Ø NPT (FOR LEVEL SENSOR)
- 7GA. CROSSMEMBER 9" WIDE FOR OIL PUMP-OUT & LEVEL SENSOR FTG.
- HANDLES PER H.T. STANDARD
- LIFTING LUGS
- 4"Ø STEEL ELBOW W/ HALF COUPLING WELDED TO TOP FOR PVC RISER PIPES
- 4"Ø ADJUSTABLE FERNCO COUPLING
- 1"Ø COUPLING W/ PLUG

NOTE :
ALL RIGHTS RESERVED. THIS DRAWING OR ANY PART THEREOF MUST NOT BE REPRODUCED IN ANY FORM WITHOUT THE WRITTEN PERMISSION OF HIGHLAND TANK.
HIGHLAND TANK SHALL BE RESPONSIBLE ONLY FOR ITEMS INDICATED ON THIS FABRICATION DRAWING UNLESS OTHERWISE NOTED. CUSTOMER IS RESPONSIBLE FOR VERIFYING CORRECTNESS OF SIZE / LOCATION OF FITTINGS , ACCESSORIES & COATINGS SHOWN ON THIS DRAWING

| REVISIONS | | | |
|--|-------|----------|-------------|
| <div><div><div>HTGLAND TANK MFG. CO.</div><div>Highland Tank</div></div></div> | | | |
| 600 GALLON OIL WATER SEPARATOR RECTANGULAR, HT, SINGLE WALL | | | |
| CUSTOMER: | | | |
| PROJECT: | | | |
| QUOTE NO: | | | CHK'D BY: |
| SCALE: | DATE: | DWG. BY: | DWG. NO.: |
| 1/2"=1'-0" | | | 00600 RHTSW |