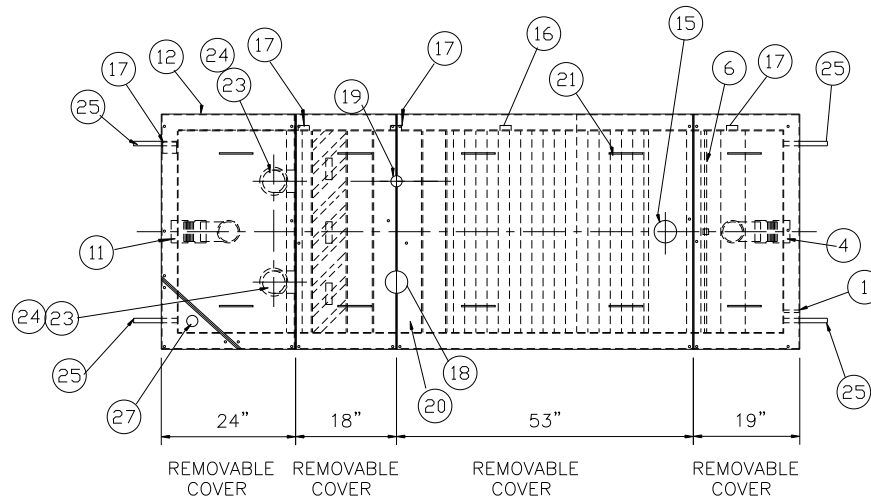


## GENERAL SPECIFICATIONS

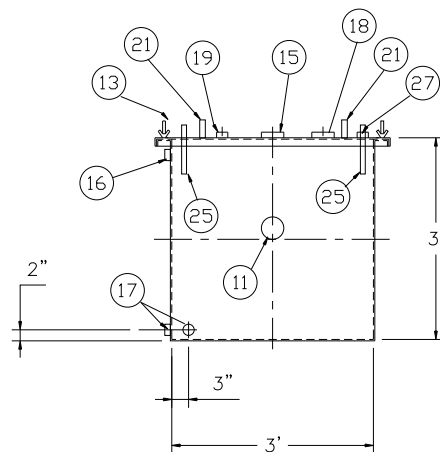
NO. REQ'D: (1)  
 CAPACITY: 600 GALLONS  
 TYPE: RECTANGULAR, HTC, ABOVEGROUND, SINGLEWALL  
 MATERIAL: MILD CARBON STEEL  
 FLOW RATE: 50 GPM  
 GAUGE:  
 SHELL- 7 GA  
 HEADS- 7 GA  
 SURFACE PREP:  
 SSPC NO.10 BLAST ALL INTERIOR SURFACES  
 SSPC NO.6 BLAST ALL EXTERIOR SURFACES  
 COATING: MATERIAL THICKNESS  
 EXTERIOR- FINISH PAINT WHITE (3 MILS)  
 INTERIOR- POLYURETHANE (15 MILS)  
 CONSTRUCTION:  
 BUTT FIT & WELD ALL CORNERS IN & OUT

## NOTES

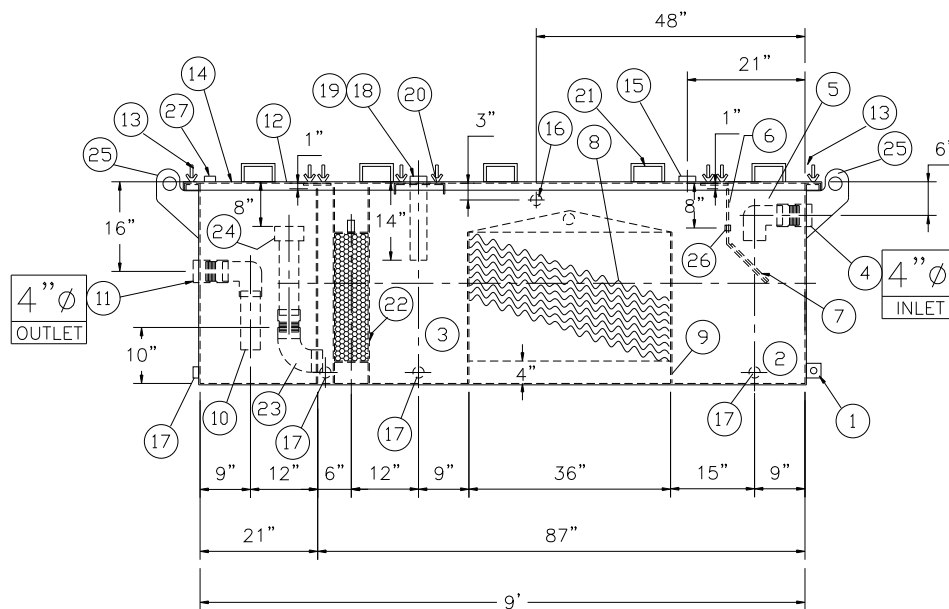
- ALL INTERNAL MATERIAL IS 10 GA
- ALL DRAINS MUST SHIP W/ STEEL PLUGS INSTALLED
- LIFTING LUGS HAVE REINFORCING PLATES



PLAN VIEW



END VIEW



ELEVATION

## PROVIDED EQUIPMENT

- 3"x3"x1/4" FLAT W/ 9/16"Ø HOLE DRILLED IN CENTER (GROUNDING LUG)
- SEDIMENT CHAMBER
- OIL WATER SEPARATOR CHAMBER
- FNPT THREADED INLET
- PVC INLET ELBOW PIPING
- VELOCITY HEAD DIFFUSION BAFFLE - 10GA
- WEAR PLATE - 1/4"
- REMOVABLE PARALLEL CORRUGATED PLATE COALESCER (CORELLA PVC PLATES) 1" PLATE SPACING
- SLUDGE BAFFLE - 10GA
- PVC OUTLET DOWNCOMER PIPE
- FNPT THREADED OUTLET
- (4) PIECE COVER - 10 GA
- NUTS & BOLTS W/ LARGE WING NUTS-TYP. (CORROSION RESISTANT)
- GASKET MATERIAL (FOR EACH REMOVABLE COVER)
- 3"Ø FNPT (CLEAN-OUT)
- 2"Ø FNPT (VENT)
- 2"Ø FNPT HALF COUPLING (DRAIN) W/ STEEL PLUG
- 3"Ø FNPT FULL COUPLING W/ 3"Ø INTERNAL PVC PIPE (OIL PUMPOUT)
- 2"Ø FNPT HALF COUPLING (INTERFACE LEVEL SENSOR)
- 7GA. CROSSMEMBER 9" WIDE FOR OIL PUMP-OUT & LEVEL SENSOR FTG.
- HANDLES PER H.T. STANDARD
- 6" THICK PETROSCREEN COALESCER MATERIAL
- 4"Ø STEEL ELBOW W/ HALF COUPLING WELDED TO TOP FOR PVC RISER PIPES
- 4"Ø ADJUSTABLE FERNCO COUPLING
- LIFTING LUGS
- 1"Ø FNPT COUPLING W/ PLUG
- 2"Ø FNPT HALF COUPLING (HIGH WATER LEVEL SENSOR)

## REVISIONS



**Highland Tank**

U.S. Patent #4,722,800 Canadian Patent # 1,296,263  
 #6,606,224 # 2,389,065

600 GALLON OIL WATER SEPARATOR  
 RECTANGULAR, HTC, SINGLE WALL

CUSTOMER:

PROJECT:

QUOTE NO:

CHK'D BY:

SCALE:

DATE:

DWG. BY:

DWG. NO.:

00600RECSWHTC

UNLESS OTHERWISE SPECIFIED DIMENSIONS ARE IN INCHES  
 TOLERANCES ARE + OR - 1"

NOTE :  
 ALL RIGHTS RESERVED. THIS DRAWING OR ANY PART THEREOF MUST NOT BE REPRODUCED IN ANY FORM WITHOUT THE WRITTEN PERMISSION OF HIGHLAND TANK.  
 HIGHLAND TANK SHALL BE RESPONSIBLE ONLY FOR ITEMS INDICATED ON THIS FABRICATION DRAWING UNLESS OTHERWISE NOTED. CUSTOMER IS RESPONSIBLE FOR VERIFYING CORRECTNESS OF SIZE / LOCATION OF FITTINGS, ACCESSORIES & COATINGS SHOWN ON THIS DRAWING