

NO. REQ'D: (1)
CAPACITY: 600 GALLONS
TYPE: RECTANGULAR, HTC, ABOVEGROUND, S-SERIES
MATERIAL: MILD CARBON STEEL
FLOW RATE: 50 GPM
GAUGE: 7 GA THROUGHOUT
SURFACE PREP:
SSPC NO.10 BLAST ALL INTERIOR SURFACES
SSPC NO.6 BLAST ALL EXTERIOR SURFACES


COATING:	MATERIAL	THICKNESS
EXTERIOR-	CHEMPRIME 3001	(3-6 MILS)
	CHEMLINE 3300	(2-3 MILS)
	TOP COAT "WHITE"	
INTERIOR-	CHEMLINE 4200 PW	(15 MILS)

NOTES

1. ALL INTERNAL MATERIAL IS 10 GA
2. ALL THREADED DRAIN FITTINGS TO HAVE STEEL THREADED PLUGS AND COATED WITH TANK
3. ALL OTHER THREADED FITTINGS TO HAVE PVC THREADED PLUGS
4. LIFTING LUGS HAVE REINFORCING PLATES



- ## PROVIDED EQUIPMENT
1. 3"x3"x1/4" FLAT W/ 9/16"Ø HOLE DRILLED IN CENTER (GROUNDING LUG)
 2. SEDIMENT CHAMBER
 3. OIL WATER SEPARATOR CHAMBER
 4. FNPT THREADED INLET
 5. PVC INLET ELBOW PIPING
 6. VELOCITY HEAD DIFFUSION BAFFLE 10GA
 7. WEAR PLATE (1/4" MATERIAL)
 8. REMOVABLE PARALLEL CORRUGATED PLATE COALESCER (CORELLA PVC PLATES) 1" PLATE SPACING
 9. SLUDGE BAFFLE – 10GA
 10. PVC OUTLET DOWNCOMER PIPE
 11. FNPT THREADED OUTLET
 12. (4) PIECE COVER W/ 5/8" BOLT HOLES – 7 GA
 13. NUTS & BOLTS W/ LARGE WING (CORROSION RESISTANT)
 14. GASKET MATERIAL (FOR EACH REMOVABLE COVER)
 15. 3"Ø FNPT (CLEAN-OUT)
 16. 2"Ø FNPT (VENT)
 17. 2"Ø FNPT (DRAIN)
 18. 3"Ø FNPT FULL COUPLING WITH 3" INTERNAL PVC PIPE (OIL PUMP OUT IN SEPARATOR CHAMBER)
 19. 2"Ø FNPT (SEPARATOR CHAMBER INTERFACE LEVEL SENSOR)
 20. 7GA. CROSSMEMBER FOR OIL PUMP-OUT & LEVEL SENSOR FITTINGS IN SEPARATOR AND OIL HOLDING CHAMBERS
 21. HANDLES PER H.T. STANDARD
 22. 6" THICK REMOVABLE PETROSCREEN CARTRIDGE COALESCER
 23. 4"Ø STEEL ELBOW W/ HALF COUPLING WELDED TO TOP FOR PVC RISER PIPES
 24. 4"Ø ADJUSTABLE FERNCO COUPLING
 25. 1/2" THICK LIFTING LUG ANGLED TOWARD CENTER
 26. 1"Ø FNPT COUPLING W/ PLUG
 27. OIL HOLDING COMPARTMENT
 28. 3" FNPT COUPLING WITH SAWTOOTH TYPE PVC OIL SKIMMER AND PIPE SUPPORT SHELF
 29. 2"Ø FNPT HALF COUPLING (SPARE)
 30. 2"Ø FNPT (HIGH LEVEL OIL HOLDING CHAMBER LEVEL SENSOR)
 31. 3"Ø FNPT FULL COUPLING WITH 3" INTERNAL PVC PIPE (OIL PUMP OUT IN OIL HOLDING CHAMBER)

REVISIONS			
		<h1>Highland Tank</h1>	
U.S. Patent #4,722,800		Canadian Patent # 1,296,263	
600 GALLON OIL WATER SEPARATOR RECTANGULAR,HTC,"S" SERIES			
CUSTOMER:			
PROJECT:			
QUOTE NO:		CHK'D BY:	
SCALE: 1/2"=1'-0"	DATE:	DWG. BY:	DWG. NO.: 00600RECSWHTCS

NOTE :
ALL RIGHTS RESERVED. THIS DRAWING OR ANY PART THEREOF MUST
NOT BE REPRODUCED IN ANY FORM WITHOUT THE WRITTEN PERMISSION
OF HIGHLAND TANK.
HIGHLAND TANK SHALL BE RESPONSIBLE ONLY FOR ITEMS INDICATED
ON THIS FABRICATION DRAWING UNLESS OTHERWISE NOTED. CUSTOMER
IS RESPONSIBLE FOR VERIFYING CORRECTNESS OF SIZE / LOCATION
OF FITTINGS , ACCESSORIES & COATINGS SHOWN ON THIS DRAWING.

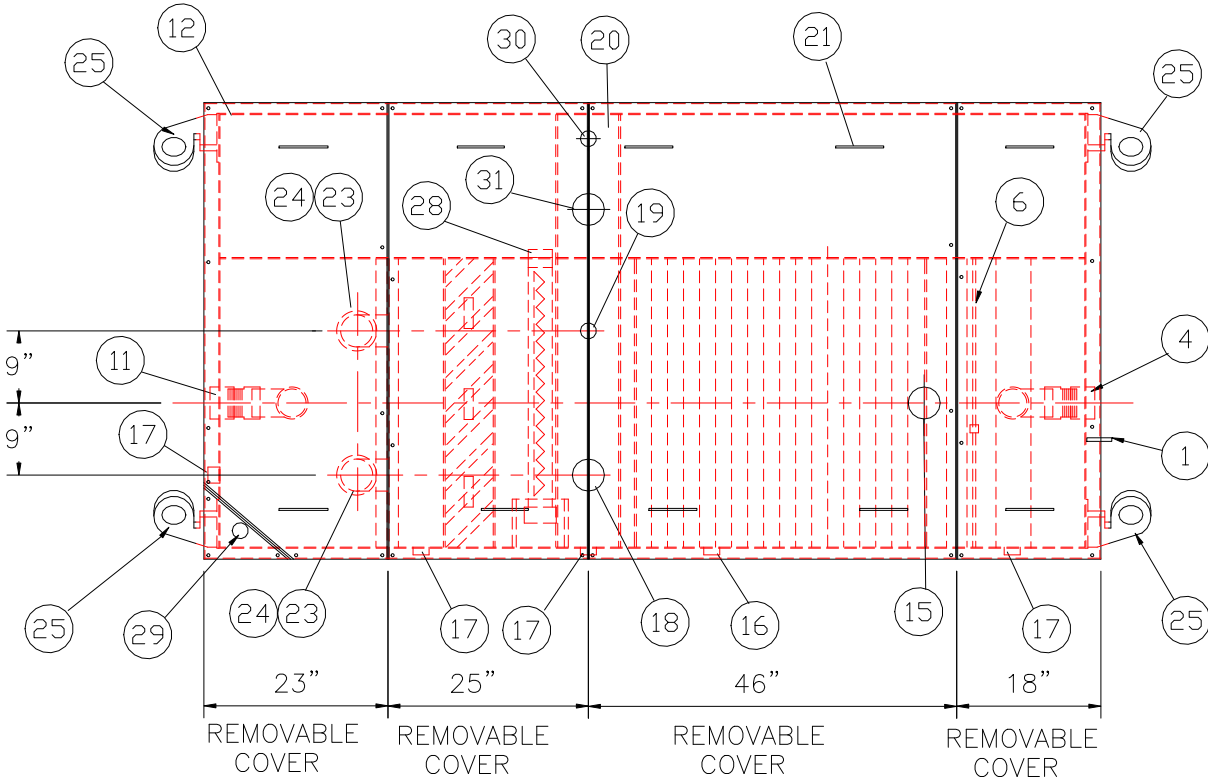
GENERAL SPECIFICATIONS

NO. REQ'D: (1)
CAPACITY: 600 GALLONS
TYPE: RECTANGULAR, HTC, ABOVEGROUND, S-SERIES
MATERIAL: MILD CARBON STEEL
FLOW RATE: 50 GPM
GAUGE: 7 GA THROUGHOUT
SURFACE PREP:
SSPC NO.10 BLAST ALL INTERIOR SURFACES
SSPC NO.6 BLAST ALL EXTERIOR SURFACES
COATING: MATERIAL THICKNESS
EXTERIOR- CHEMPRIME 3001 (3-6 MILS)
CHEMLINE 3300 (2-3 MILS)
TOP COAT "WHITE"
INTERIOR- CHEMLINE 4200 PW (15 MILS)

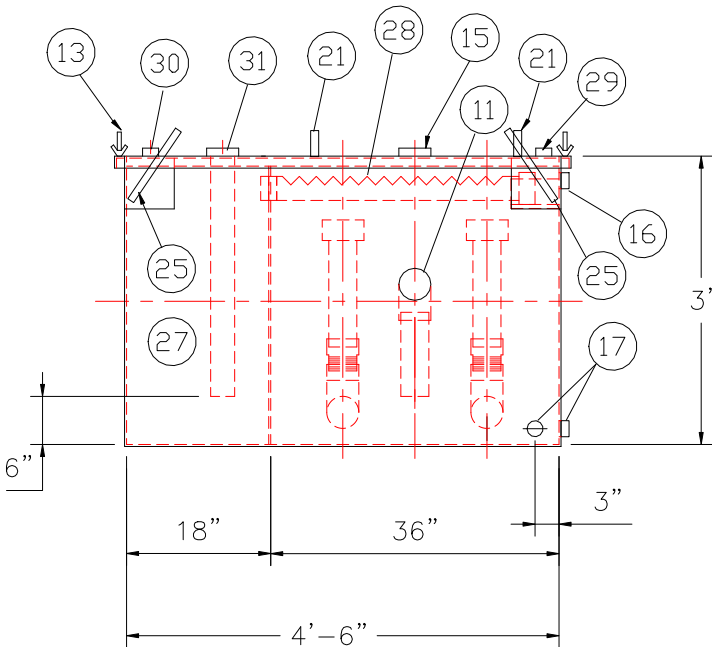
CONSTRUCTION:
BUTT FIT AND WELD ALL CORNERS IN & OUT

NOTES

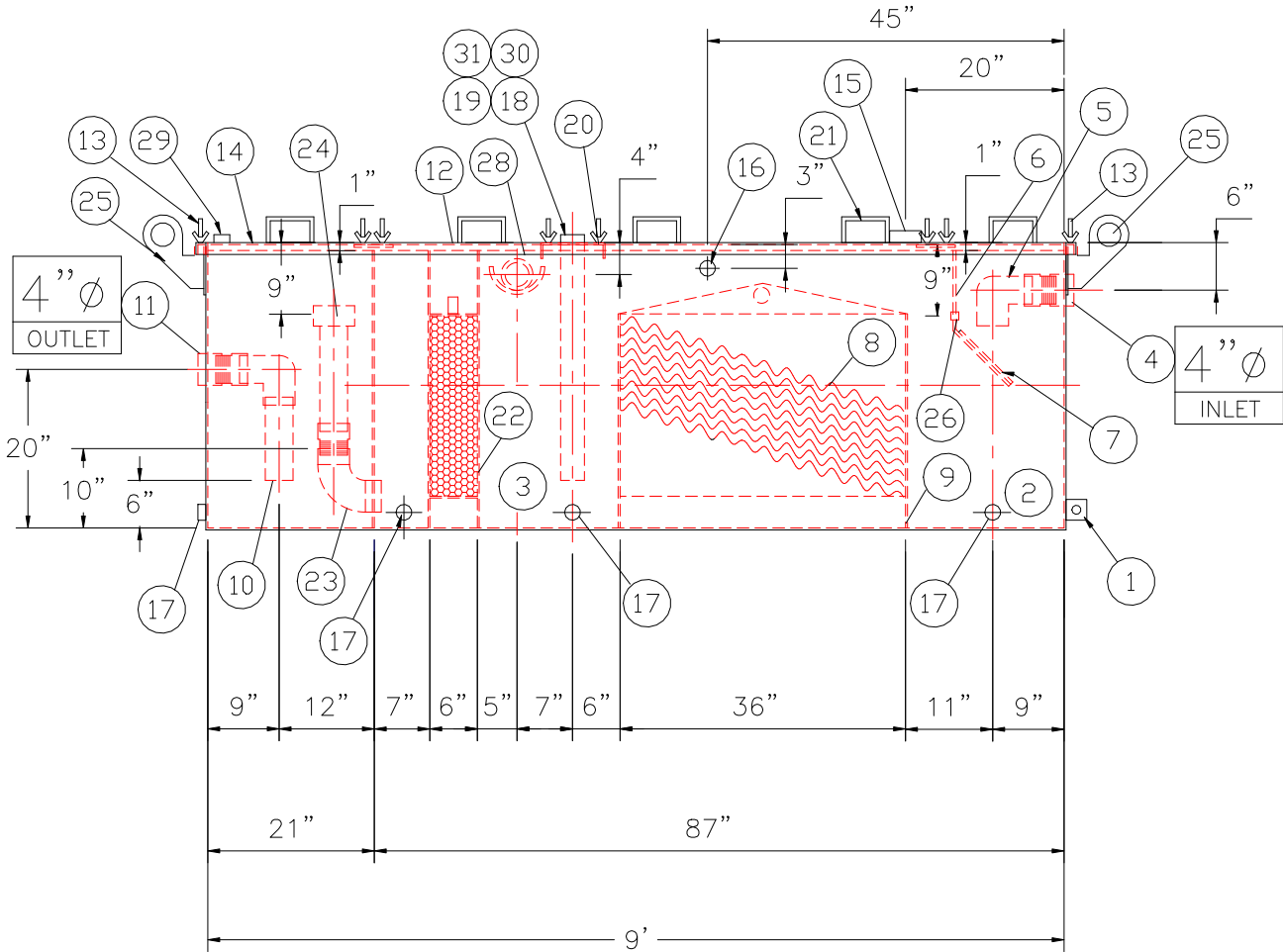
- 1. ALL INTERNAL MATERIAL IS 10 GA
- 2. ALL THREADED DRAIN FITTINGS TO HAVE STEEL THREADED PLUGS AND COATED WITH TANK
- 3. ALL OTHER THREADED FITTINGS TO HAVE PVC THREADED PLUGS
- 4. LIFTING LUGS HAVE REINFORCING PLATES



PLAN VIEW



END VIEW



ELEVATION

PROVIDED EQUIPMENT

- 1. 3"x3"x1/4" FLAT W/ 9/16"Ø HOLE DRILLED IN CENTER (GROUNDING LUG)
- 2. SEDIMENT CHAMBER
- 3. OIL WATER SEPARATOR CHAMBER
- 4. FNPT THREADED INLET
- 5. PVC INLET ELBOW PIPING
- 6. VELOCITY HEAD DIFFUSION BAFFLE 10GA
- 7. WEAR PLATE (1/4" MATERIAL)
- 8. REMOVABLE PARALLEL CORRUGATED PLATE COALESCER (CORELLA PVC PLATES) 1" PLATE SPACING
- 9. SLUDGE BAFFLE - 10GA
- 10. PVC OUTLET DOWNCOMER PIPE
- 11. FNPT THREADED OUTLET
- 12. (4) PIECE COVER W/ 5/8" BOLT HOLES - 7 GA
- 13. NUTS & BOLTS W/ LARGE WING (CORROSION RESISTANT)
- 14. GASKET MATERIAL (FOR EACH REMOVABLE COVER)
- 15. 3"Ø FNPT (CLEAN-OUT)
- 16. 2"Ø FNPT (VENT)
- 17. 2"Ø FNPT (DRAIN)
- 18. 3"Ø FNPT FULL COUPLING WITH 3" INTERNAL PVC PIPE (OIL PUMP OUT IN SEPERATOR CHAMBER)
- 19. 2"Ø FNPT (SEPARATOR CHAMBER INTERFACE LEVEL SENSOR)
- 20. 7GA. CROSSMEMBER FOR OIL PUMP-OUT & LEVEL SENSOR FITTINGS IN SEPARATOR AND OIL HOLDING CHAMBERS
- 21. HANDLES PER H.T. STANDARD
- 22. 6" THICK REMOVABLE PETROSCREEN CARTRIDGE COALESCER
- 23. 4"Ø STEEL ELBOW W/ HALF COUPLING WELDED TO TOP FOR PVC RISER PIPES
- 24. 4"Ø ADJUSTABLE FERNCO COUPLING
- 25. 1/2" THICK LIFTING LUG ANGLED TOWARD CENTER
- 26. 1"Ø FNPT COUPLING W/ PLUG
- 27. OIL HOLDING COMPARTMENT
- 28. 3" FNPT COUPLING WITH SAWTOOTH TYPE PVC OIL SKIMMER AND PIPE SUPPORT SHELF
- 29. 2"Ø FNPT HALF COUPLING (SPARE)
- 30. 2"Ø FNPT (HIGH LEVEL OIL HOLDING CHAMBER LEVEL SENSOR)
- 31. 3"Ø FNPT FULL COUPLING WITH 3" INTERNAL PVC PIPE (OIL PUMP OUT IN OIL HOLDING CHAMBER)

REVISIONS



Highland Tank

U.S. Patent #4,722,800 Canadian Patent # 1,296,263

600 GALLON OIL WATER SEPARATOR
RECTANGULAR, HTC, "S" SERIES

CUSTOMER:

PROJECT:

QUOTE NO:

CHK'D BY:

SCALE:
1/2"=1'-0"

DATE:

DWG. BY:

DWG. NO.:

00600RECSWHTCS

NOTE :
ALL RIGHTS RESERVED. THIS DRAWING OR ANY PART THEREOF MUST NOT BE REPRODUCED IN ANY FORM WITHOUT THE WRITTEN PERMISSION OF HIGHLAND TANK.
HIGHLAND TANK SHALL BE RESPONSIBLE ONLY FOR ITEMS INDICATED ON THIS FABRICATION DRAWING UNLESS OTHERWISE NOTED. CUSTOMER IS RESPONSIBLE FOR VERIFYING CORRECTNESS OF SIZE / LOCATION OF FITTINGS , ACCESSORIES & COATINGS SHOWN ON THIS DRAWING