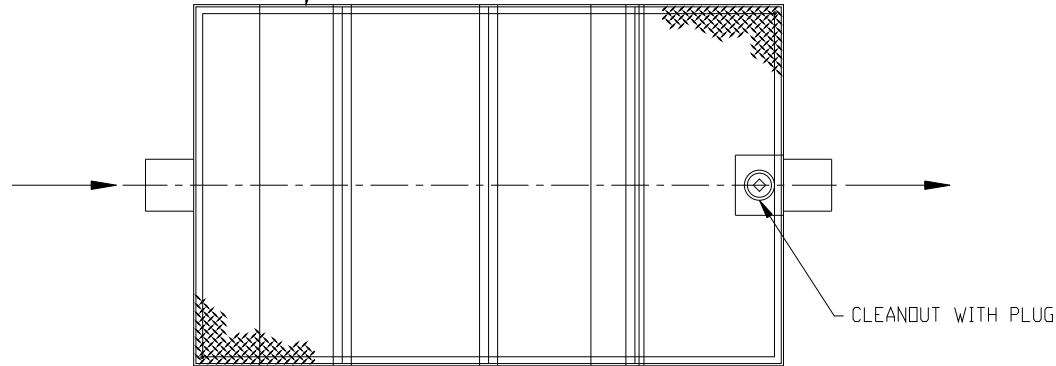


NOTE:
STANDARD TANK HEIGHT SHOWN
CUSTOMER TO VERIFY ACTUAL
HEIGHT REQUIRED

GASKET & BOLT-ON DECKPLATE COVERS W/ RECESSED LIFTING EYES
PAINTED BLACK - ****FOOT TRAFFIC ONLY****
H-20 RATED COVERS AVAILABLE AS OPTION



8" NO-HUB INLET
W/ FLOW CONTROL

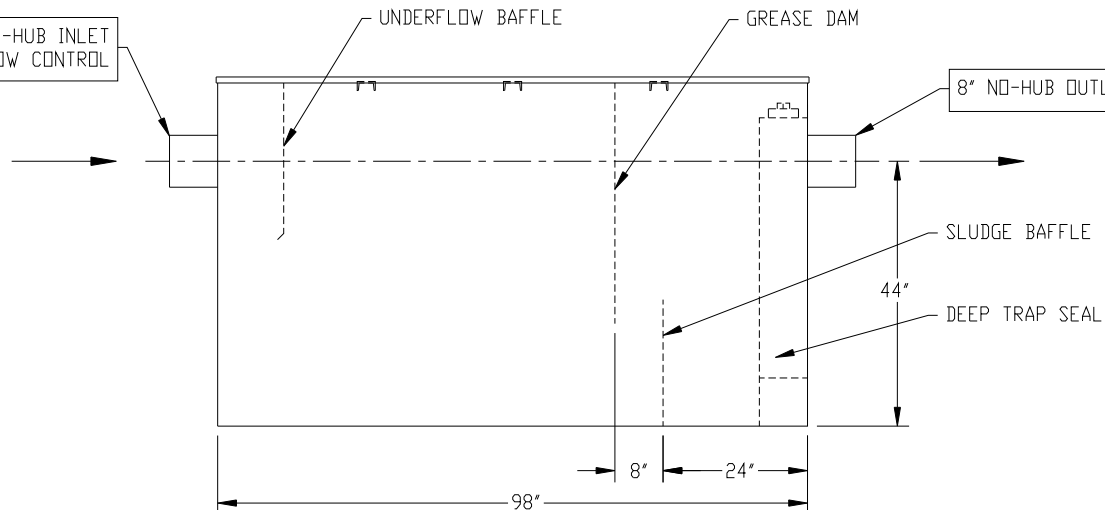
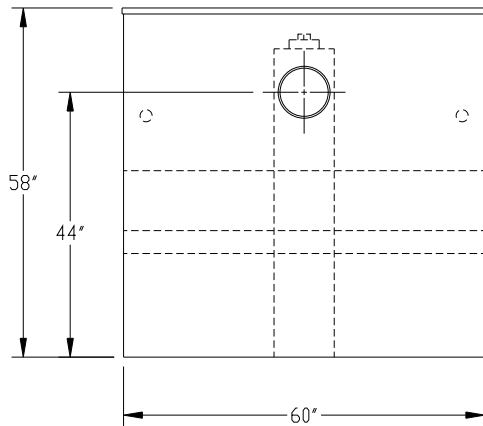
UNDERFLOW BAFFLE

GREASE DAM

8" NO-HUB OUTLET

SLUDGE BAFFLE

DEEP TRAP SEAL



NOTE :
ALL RIGHTS RESERVED. THIS DRAWING OR ANY PART THEREOF MUST
NOT BE REPRODUCED IN ANY FORM WITHOUT THE WRITTEN PERMISSION
OF HIGHLAND TANK.
HIGHLAND TANK SHALL BE RESPONSIBLE ONLY FOR ITEMS INDICATED
ON THIS FABRICATION DRAWING UNLESS OTHERWISE NOTED. CUSTOMER
IS RESPONSIBLE FOR VERIFYING CORRECTNESS OF SIZE / LOCATION
OF FITTINGS , ACCESSORIES & COATINGS SHOWN ON THIS DRAWING

NOTE: ALL DIMENSIONS IN INCHES UNLESS NOTED OTHERWISE

GENERAL SPECIFICATIONS

NO. REQ'D:
MODEL: MGI-750 CS
MAXIMUM FLOW RATE: 750 GPM
MATERIAL: 7 GA CARBON STEEL
SURFACE PREP:
SSPC-SP 10 BLAST ALL SURFACES
INT. & EXT. COATING: POLYURETHANE
STATIC WATER CAPACITY: 1,018 GAL
GREASE HOLDING CAPACITY: 1,500 LBS
APPROX. DRY WEIGHT: 950 LBS

GENERAL NOTES

- ALL PLUMBING CONNECTIONS ARE
SUBJECT TO LOCAL CODES



REVISIONS



Highland Tank®

MANUAL GREASE INTERCEPTOR
MGI-750 CS

CUSTOMER:

PROJECT:

QUOTE NO:

CHK'D BY:

SCALE: DATE: DWG. NO. DIMENSION TOLERANCE: $\pm 1"$

NTS 12/20/10

DWG. BY: MGS

MGI-750 CS