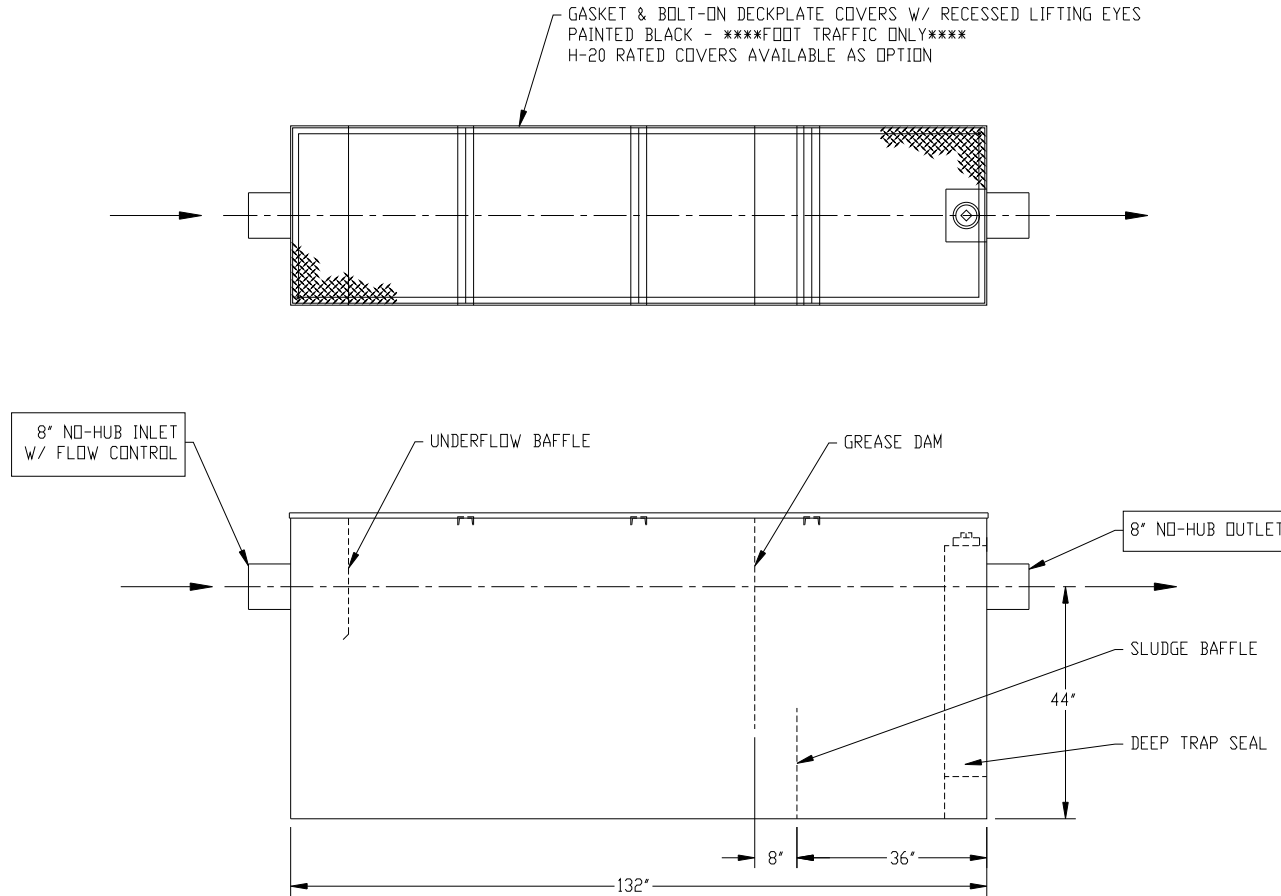
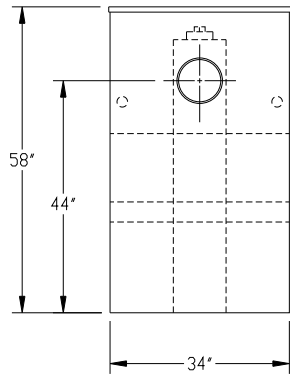


NOTE:
STANDARD TANK HEIGHT SHOWN
CUSTOMER TO VERIFY ACTUAL
HEIGHT REQUIRED



GASKET & BOLT-ON DECKPLATE COVERS W/ RECESSED LIFTING EYES
PAINTED BLACK - ****FOOT TRAFFIC ONLY****
H-20 RATED COVERS AVAILABLE AS OPTION

NOTE :
ALL RIGHTS RESERVED. THIS DRAWING OR ANY PART THEREOF MUST
NOT BE REPRODUCED IN ANY FORM WITHOUT THE WRITTEN PERMISSION
OF HIGHLAND TANK.
HIGHLAND TANK SHALL BE RESPONSIBLE ONLY FOR ITEMS INDICATED
ON THIS FABRICATION DRAWING UNLESS OTHERWISE NOTED. CUSTOMER
IS RESPONSIBLE FOR VERIFYING CORRECTNESS OF SIZE / LOCATION
OF FITTINGS , ACCESSORIES & COATINGS SHOWN ON THIS DRAWING

NOTE: ALL DIMENSIONS IN INCHES UNLESS NOTED OTHERWISE

GENERAL SPECIFICATIONS

NO. REQ'D:
MODEL: MGI-750N CS
MAXIMUM FLOW RATE: 750 GPM
MATERIAL: 7 GA CARBON STEEL
SURFACE PREP:
SSPC-SP 10 BLAST ALL SURFACES
INT. & EXT. COATING: POLYURETHANE
STATIC WATER CAPACITY: 777 GAL
GREASE HOLDING CAPACITY: 1,500 LBS
APPROX. DRY WEIGHT: 500 LBS

GENERAL NOTES

- ALL PLUMBING CONNECTIONS ARE
SUBJECT TO LOCAL CODES

REVISIONS



MANUAL GREASE INTERCEPTOR
MGI-750N CS

CUSTOMER:

PROJECT:

QUOTE NO:

CHK'D BY:

SCALE:	DATE:	DWG. BY:	DWG. NO.:
NTS	12/20/10	MGS	MGI-750N CS

DIMENSION TOLERANCE: $\pm 1"$