

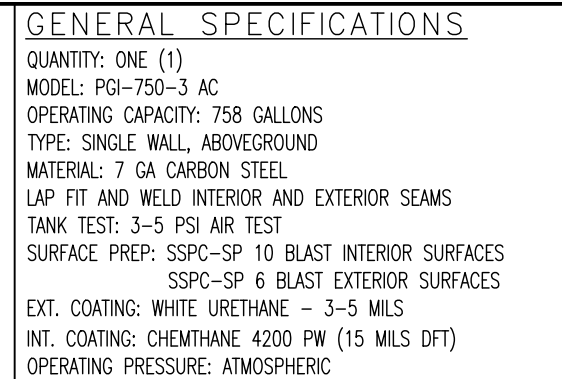
CUSTOMER APPROVAL

THE CUSTOMER HAS REVIEWED THIS
DRAWING AND VERIFIED THE ACCURACY OF
ALL INFORMATION AND DIMENSIONS.

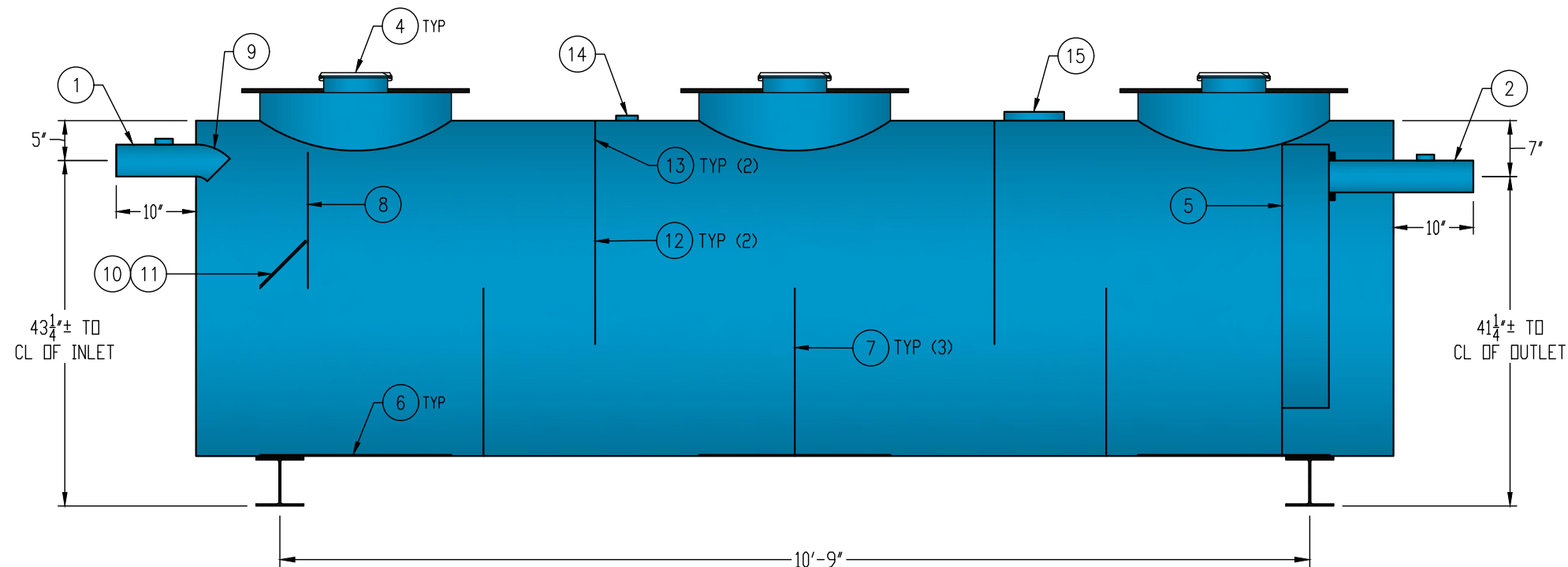
SIGNED: _____

DATE: _____

DATE:



1. 4"Ø SCH 40 PIPE STUB – INLET
2. 4"Ø SCH 40 PIPE STUB – OUTLET
3. 2" HC – VENT
4. 24"Ø MANWAY WITH 8" EASY-ACCESS HATCH
5. 6" SQUARE STEEL OUTLET BAFFLE WITH OPEN TOP
6. STRIKER PLATE
7. SLUDGE BAFFLE – 7 GA
8. UNDERFLOW BAFFLE – 7 GA
9. 4"Ø 45° DIFFUSION ELBOW
10. REMOVABLE DIFFUSION PLATE – 7 GA
11. 8" x 8" WEAR PLATE – 1/4"
12. GREASE DAM – 7 GA
13. 2" HOLE IN GREASE DAM FOR AIR CIRCULATION
14. 2" HC – NORMAL TANK VENT
15. 6" HC – EMERGENCY VENT
16. 6" HIGH STEEL SADDLE – SEAL-WELD TO TANK



NOTE:
ALL RIGHTS RESERVED. THIS DRAWING, OR ANY PART THEREOF, MUST NOT BE REPRODUCED, IN ANY FORM WITHOUT WRITTEN PERMISSION FROM HIGHLAND TANK. UNLESS OTHERWISE NOTED, HIGHLAND TANK SHALL BE RESPONSIBLE ONLY FOR ITEMS INDICATED ON THIS FABRICATION DRAWING. THE CUSTOMER IS RESPONSIBLE FOR VERIFYING THE CORRECTNESS OF THE TYPE, SIZE, AND LOCATION OF ALL FITTINGS, ACCESSORIES, AND COATINGS SHOWN ON THIS DRAWING.



ORDER:

SCALE: NTS	DATE: 4/1/19	DWG. BY: MGS	DWG. NO.: PGI-750-3 AC
---------------	-----------------	-----------------	---------------------------

DIMENSION TOLERANCE: $\pm 1"$