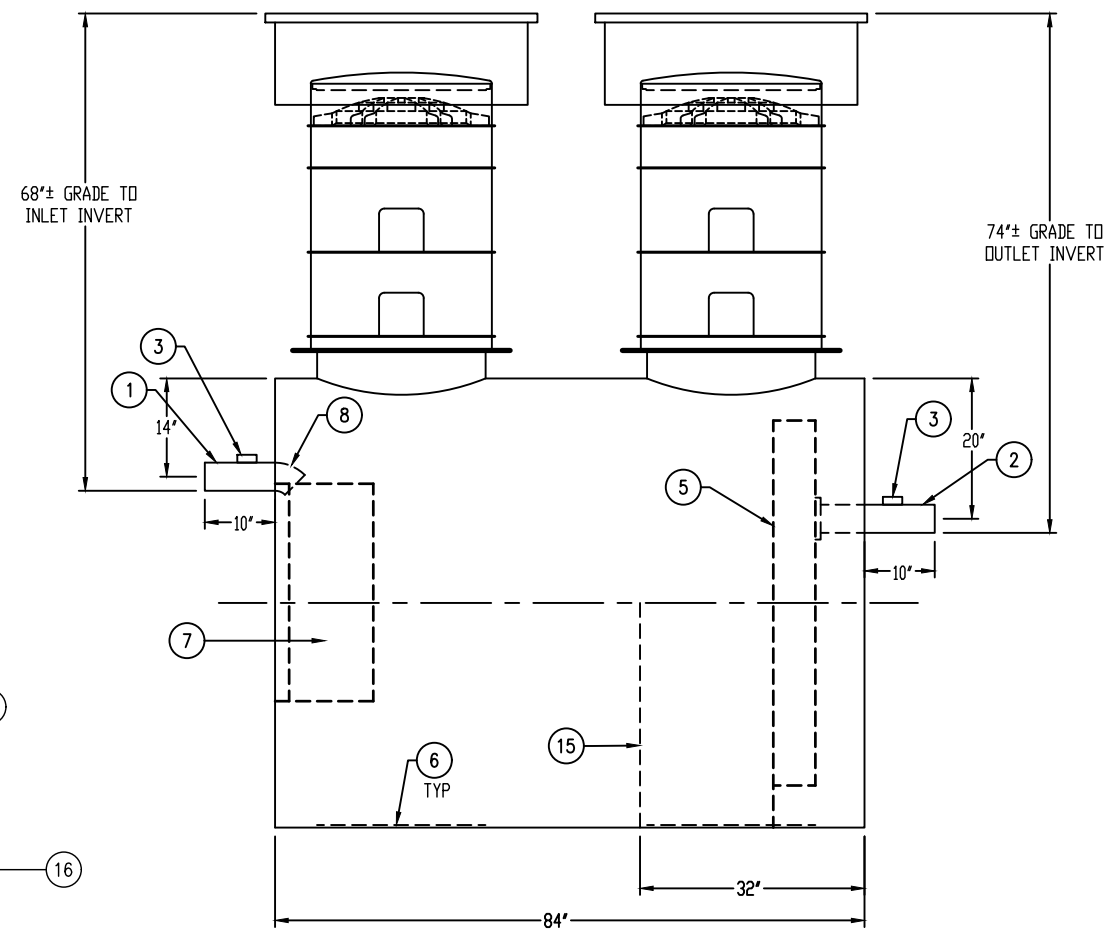
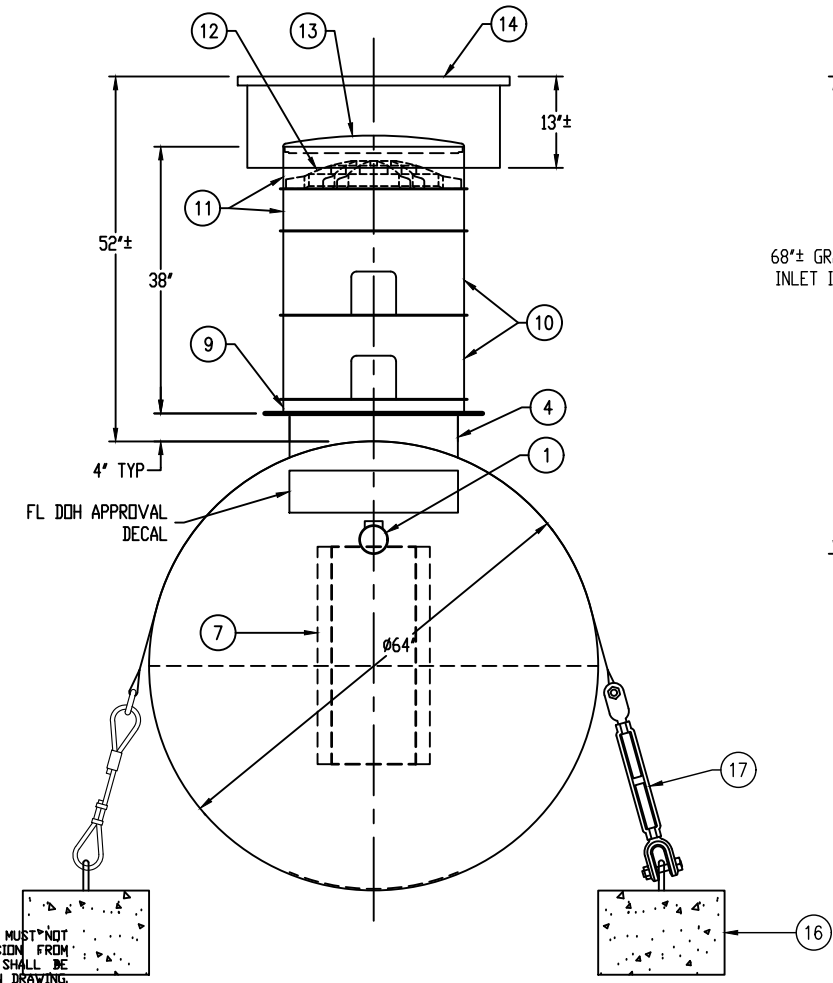


APPROXIMATE LOCATIONS SHOWN FOR  
DEADMEN & HOLD-DOWN STRAPS  
ACTUAL LOCATIONS TO BE DETERMINED  
AT TIME OF INSTALLATION



**GENERAL SPECIFICATIONS**

QUANTITY: ONE (1)  
MODEL: PGI-800 FL  
TOTAL CAPACITY: 1,169 GALLONS  
EFFECTIVE CAPACITY: 814 GALLONS  
FREEBOARD VOLUME: 355 GALLONS  
TYPE: SINGLE WALL, HIGHGUARD, UNDERGROUND  
MATERIAL: 7 GA CARBON STEEL  
MATERIAL BASED ON 120" MAXIMUM BURIAL DEPTH  
LAP FIT AND WELD INTERIOR AND EXTERIOR SEAMS  
TANK TEST: 3-5 PSI AIR TEST  
SURFACE PREP: SSPC-SP 10 BLAST INTERIOR SURFACES  
SSPC-SP 6 BLAST EXTERIOR SURFACES  
EXT. COATING: HIGHGUARD POLYURETHANE - 75 MILS  
INT. COATING: CHEMTHANE 4200 PW (15 MILS DFT)  
OPERATING PRESSURE: ATMOSPHERIC

**NOTE:** OPTIONAL 2" VENTS ON MANWAY RISERS AT THE  
DISCRETION OF THE OWNER

**PROVIDED EQUIPMENT**

1. 4"Ø SCH 40 PIPE STUB - INLET
2. 4"Ø SCH 40 PIPE STUB - OUTLET
3. 2" HC - VENT
4. 24"Ø MANWAY FOR STACKABLE RISER
5. STEEL OUTLET DOWNCOMER BAFFLE WITH OPEN TOP
6. STRIKER PLATE
7. BOLT-ON INLET DIFFUSION BAFFLE - 7 GA
8. 4"Ø 45° DIFFUSION ELBOW
9. STACKABLE RISER ADAPTER RING & GASKET
10. (2) 24"Ø x 12" STACKABLE RISER - ALL STACKABLE  
RISER COMPONENTS ARE PRE-ASSEMBLED AND  
COMPLETE MANWAY RISER IS SHIPPED LOOSE
11. (2) 24"Ø x 6" STACKABLE RISER
12. STACKABLE RISER SAFETY SCREEN
13. 24"Ø PVC COVER
14. 36"Ø GRADE-LEVEL MANWAY - SHIPPED LOOSE
15. SLUDGE BAFFLE - 7 GA
16. (2) CDA-15 CONCRETE DEADMAN
17. (2) POLYESTER HOLD-DOWN STRAPS

**NOTE:** CONCRETE DEADMEN AND HOLD-DOWN STRAPS ARE NOT  
REQUIRED FOR INSTALLATION OF GREASE INTERCEPTOR. THE  
NEED FOR HOLD-DOWN APPARATUS WILL BE DETERMINED BY  
THE ENGINEER OF RECORD OR PROJECT OWNER.

THIS DRAWING IS SUBJECT TO CHANGE AT THE DISCRETION  
OF THE MANUFACTURER. CONTACT HIGHLAND TANK FOR  
THE MOST UP-TO-DATE INFORMATION AND DRAWINGS OF  
OUR PRODUCTS.

**Highland Tank®**

PASSIVE GREASE INTERCEPTOR

FLORIDA DEPARTMENT OF HEALTH  
APPROVAL NUMBER  
**70-151-01102-C4**  
EFFECTIVE CAPACITY  
800 GALLONS

CUSTOMER: \_\_\_\_\_

PROJECT: \_\_\_\_\_

QUOTE NO.: \_\_\_\_\_ ORDER: \_\_\_\_\_

SCALE: NTS	DATE: 2/22/21	DWG. BY: MGS	DWG. NO.: PGI-800 FL
------------	---------------	--------------	----------------------

**NOTE:**  
ALL RIGHTS RESERVED. THIS DRAWING, OR ANY PART THEREOF, MUST NOT  
BE REPRODUCED IN ANY FORM WITHOUT WRITTEN PERMISSION FROM  
HIGHLAND TANK. UNLESS OTHERWISE NOTED, HIGHLAND TANK SHALL BE  
RESPONSIBLE ONLY FOR ITEMS INDICATED ON THIS FABRICATION DRAWING.  
THE CUSTOMER IS RESPONSIBLE FOR VERIFYING THE CORRECTNESS OF  
THE TYPE, SIZE, AND LOCATION OF ALL FITTINGS, ACCESSORIES, AND  
COATINGS SHOWN ON THIS DRAWING.

DIMENSION TOLERANCE: ± 1"