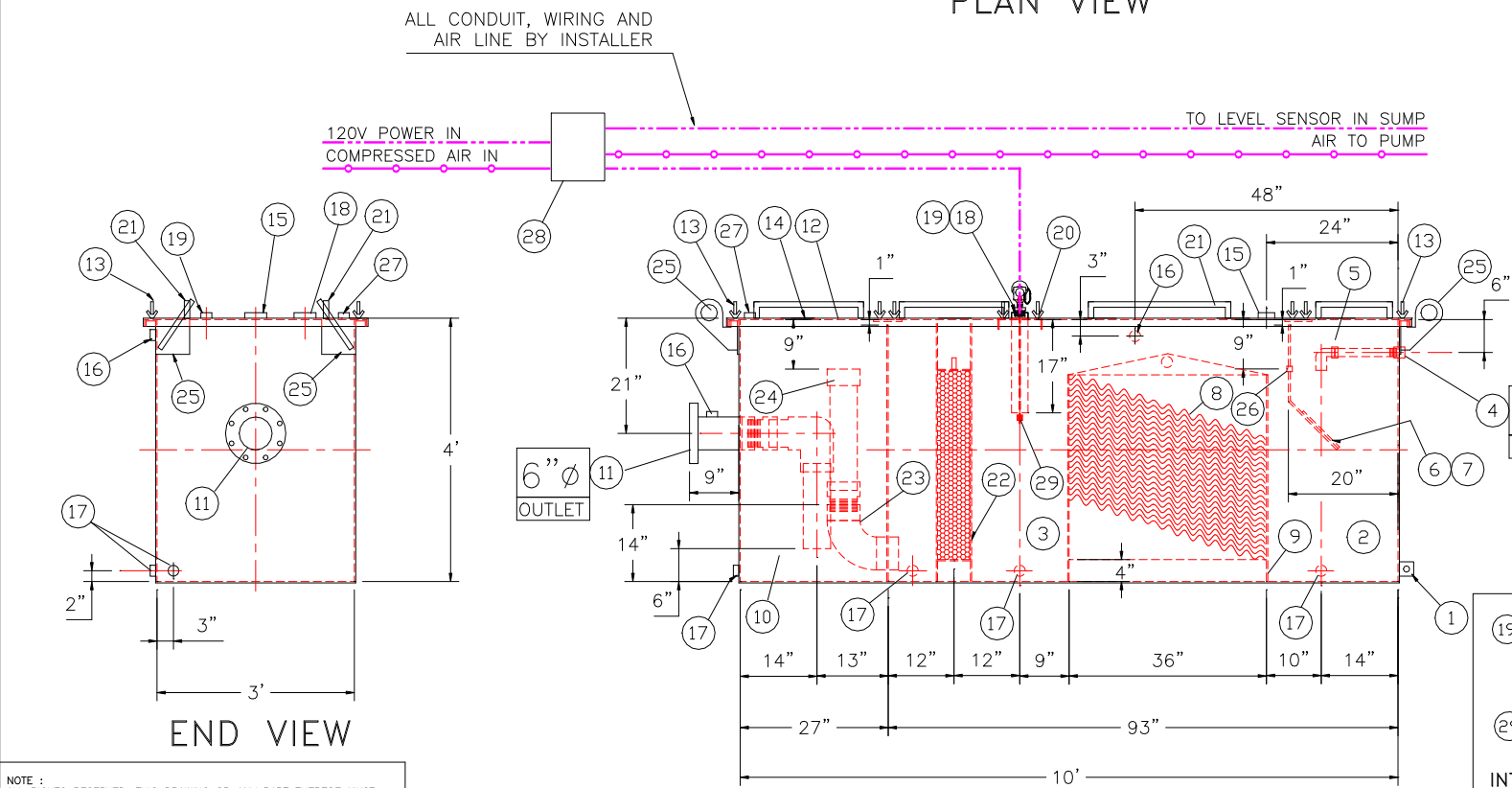
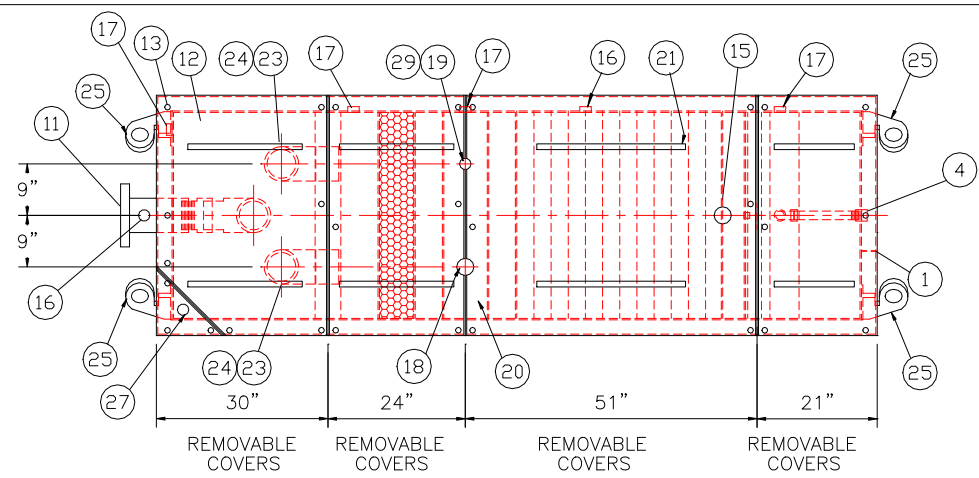


**GENERAL SPECIFICATIONS**  
NO. REQ'D: (1)  
CAPACITY: 900 GALLONS  
TYPE: RECTANGULAR, HTC, ABOVEGROUND, SINGLE WALL  
MATERIAL: MILD CARBON STEEL  
FLOW RATE: 75 GPM  
GAUGE:  
SHELL- 7 GA  
HEADS- 7 GA  
SURFACE PREP:  
SSPC NO.10 BLAST ALL INTERIOR SURFACES  
SSPC NO.6 BLAST ALL EXTERIOR SURFACES  
COATING: MATERIAL THICKNESS  
EXTERIOR- CHEMPRIME 3001 (3-6 MILS)  
CHEMLINE 3300 (2-3 MILS)  
TOP COAT "WHITE"  
INTERIOR- CHEMLINE 4200 PW (15 MILS)  
CONSTRUCTION:  
BUTT FIT & WELD ALL CORNERS IN & OUT

**NOTES**  
1. ALL INTERNAL MATERIAL IS 10 GA  
2. ALL THREADED DRAIN FITTINGS TO HAVE STEEL THREADED PLUGS AND COATED WITH TANK  
3. ALL OTHER THREADED FITTINGS TO HAVE PVC THREADED PLUGS  
4. LIFTING LUGS HAVE REINFORCING PLATES



- DRAWING 1 OF 2**  
REFERENCE DWG 00900DSBSUMP FOR DEEP SUMP BASIN DETAILS
- PROVIDED EQUIPMENT**
- 3"x3"x1/4" FLAT W/ 9/16" Ø HOLE DRILLED IN CENTER (GROUNDING LUG)
  - SEDIMENT CHAMBER
  - OIL WATER SEPARATOR CHAMBER
  - FNPT THREADED INLET
  - PVC INLET ELBOW PIPING
  - VELOCITY HEAD DIFFUSION BAFFLE - 10GA
  - WEAR PLATE - 1/4"
  - REMOVABLE PARALLEL CORRUGATED PLATE COALESCER (CORELLA PVC PLATES) 1" PLATE SPACING
  - SLUDGE BAFFLE - 10GA
  - PVC OUTLET DOWNCOMER PIPE
  - 150# RFSO FLANGED OUTLET
  - (4) PIECE COVER W/ 5/8" BOLT HOLES - 7 GA
  - NUTS & BOLTS W/ LARGE WING NUTS-TYP. (CORROSION RESISTANT)
  - GASKET MATERIAL (FOR EACH REMOVABLE COVER)
  - 3" Ø FNPT (CLEAN-OUT)
  - 2" Ø FNPT (VENT)
  - 2" Ø FNPT HALF COUPLING (DRAIN) W/ STEEL PLUG
  - 3" Ø FNPT FULL COUPLING W/ 3" Ø INTERNAL PVC PIPE (OIL PUMPOUT)
  - 2" Ø FNPT HALF COUPLING (INTERFACE LEVEL SENSOR)
  - 7GA. CROSSMEMBER 9" WIDE FOR OIL PUMP-OUT & LEVEL SENSOR FTG.
  - HANDLES PER H.T. STANDARD
  - 6" THICK REMOVABLE PETROSCREEN CARTRIDGE COALESCER
  - 6" Ø STEEL ELBOW W/ HALF COUPLING WELDED TO TOP FOR PVC RISER PIPES
  - 6" Ø ADJUSTABLE FERNOCO COUPLING
  - 1/2" THICK LIFTING LUG ANGLED TOWARD CENTER
  - 1" Ø FNPT COUPLING W/ PLUG
  - 2" Ø FNPT HALF COUPLING (SPARE)
  - PUMP CONTROL AND ALARM PANEL 120V/60HZ/1PH. SEE DSB DRAWING FOR MODEL #
  - HTF-1 FLOAT INTERFACE SENSOR W/ NEMA 4 CAP

NOTE :  
ALL RIGHTS RESERVED. THIS DRAWING OR ANY PART THEREOF MUST NOT BE REPRODUCED IN ANY FORM WITHOUT THE WRITTEN PERMISSION OF HIGHLAND TANK.  
HIGHLAND TANK SHALL BE RESPONSIBLE ONLY FOR ITEMS INDICATED ON THIS FABRICATION DRAWING UNLESS OTHERWISE NOTED. CUSTOMER IS RESPONSIBLE FOR VERIFYING CORRECTNESS OF SIZE / LOCATION OF FITTINGS , ACCESSORIES & COATINGS SHOWN ON THIS DRAWING

UNLESS OTHERWISE SPECIFIED DIMENSIONS ARE IN INCHES  
TOLERANCES ARE + DR - 1"

SCALE: 1/2"=1'-0"  
DATE: 6-28-22  
DWG. BY: REM  
DWG. NO.: 00900DSBOWS

**REVISIONS**

**Highland Tank**  
U.S. Patent #4,722,800 Canadian Patent # 1,296,263

900 GALLON OIL WATER SEPARATOR  
RECTANGULAR, HTC, SINGLE WALL

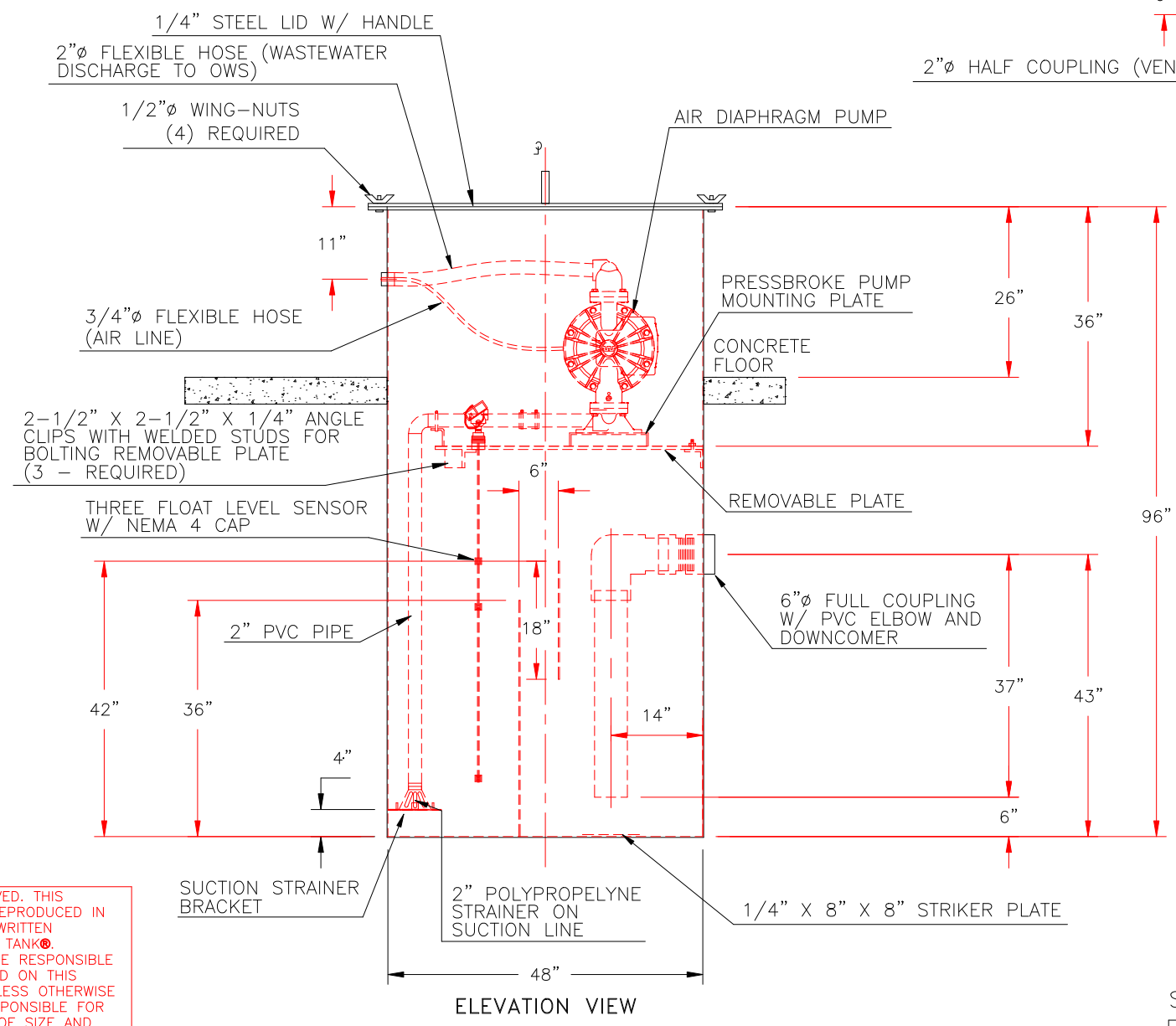
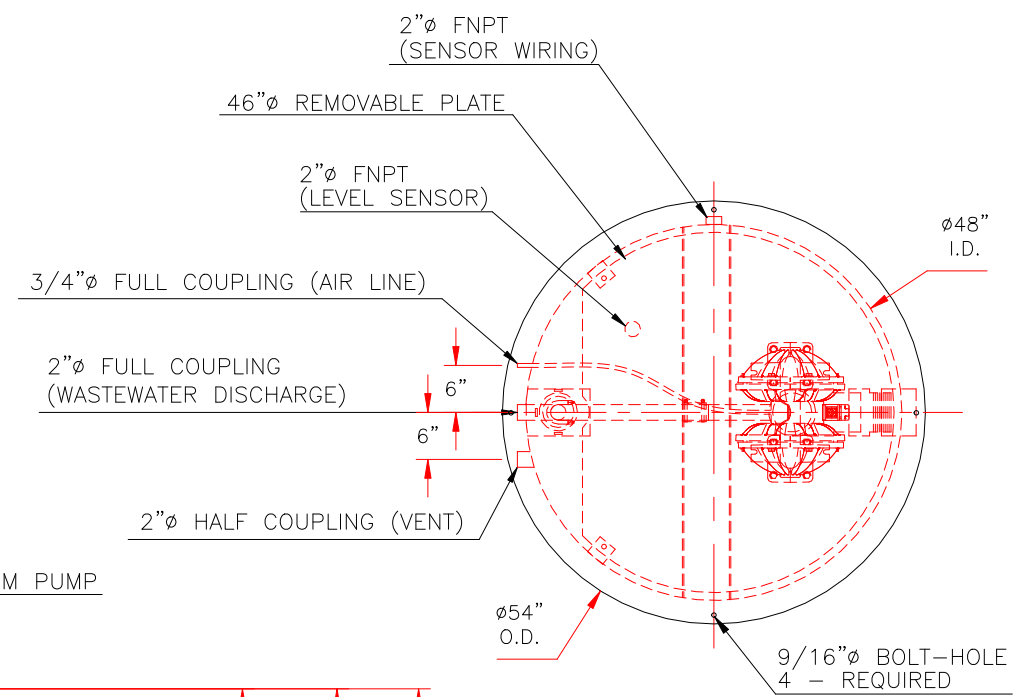
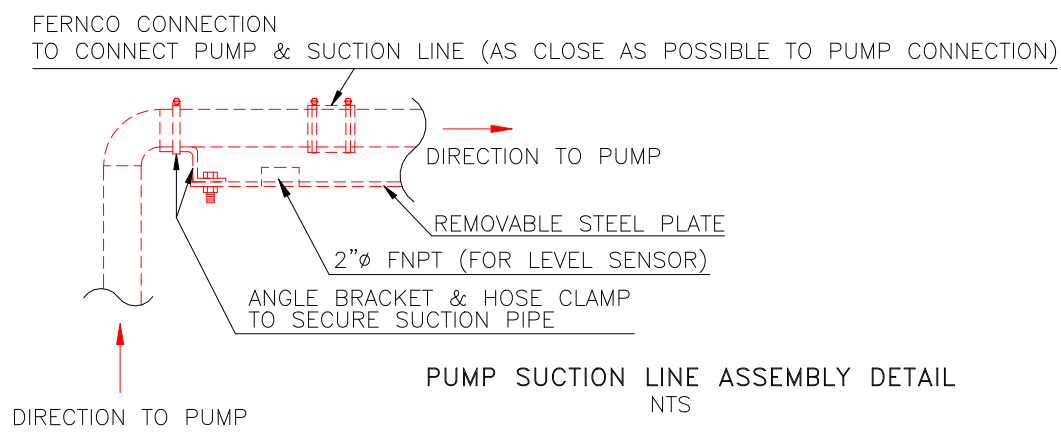
CUSTOMER:

PROJECT:

QUOTE NO:

CHK'D BY:

WILDEN AIR DIAPHRAGM PUMP MODEL: XPS820/AAAAA/ZGS/BN/BN/0248  
WITH INLET AND DISCHARGE FACING AIR INLET  
THREE FLOAT LEVEL SENSOR MODEL: HTF-2C-50A-24A-17A  
CONTROL PANEL MODEL: S-115PC-ALRM 2-3/4"



NOTE: ALL RIGHTS RESERVED. THIS  
DRAWING MUST NOT BE REPRODUCED IN  
ANY FORM WITHOUT THE WRITTEN  
PERMISSION OF HIGHLAND TANK®.  
HIGHLAND TANK® SHALL BE RESPONSIBLE  
ONLY FOR ITEMS INDICATED ON THIS  
FABRICATION DRAWING UNLESS OTHERWISE  
NOTED. CUSTOMER IS RESPONSIBLE FOR  
VERIFYING CORRECTNESS OF SIZE AND  
LOCATION OF FITTINGS, ACCESSORIES, AND  
COATINGS SHOWN ON THIS DRAWING.

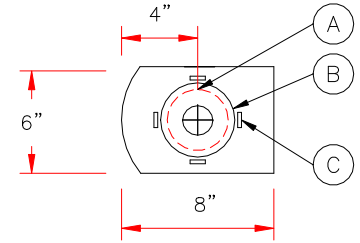
DRAWING 2 OF 2  
GENERAL SPECIFICATIONS

CAPACITY: 752 GALLONS  
MATERIAL: MILD CARBON STEEL  
GAUGE OR THICKNESS:  
SHELL- 7GA  
BOTTOM- 7GA  
BAFFLE- 7GA  
SURFACE PREP:  
SSPC NO. 10 BLAST ALL INTERIOR SURFACES  
SSPC NO. 6 BLAST ALL EXTERIOR SURFACES  
COATING:  
INTERIOR: POLYURETHANE (15 MILS)  
EXTERIOR: POLYURETHANE (15 MILS)  
FLOW RATE - 75 GPM

NOTES

1. SLUDGE BAFFLE MADE FROM 7GA.
2. AIR PRESSURE TO PUMP TO BE ADJUSTED  
TO ACHIEVE 75 GPM MAX FLOW RATE.

A= 4" DIA. THRU HOLE  
B= 4 7/8" O.D. STRAINER  
C= 1"x1" TABS ON 90° CENTERS  
ON 5 1/4" I.D. CIRCLE



STRAINER BRACKET DETAIL  
NTS



**Highland Tank®**

96" SUMP W/ INTERNAL PUMP®

CUSTOMER:

PROJECT:

QUOTE NO:

CHK'D BY:

SEE DWG: 00900DSBOWS FOR TANK DRAWING

UNLESS OTHERWISE SPECIFIED DIMENSIONS ARE IN INCHES  
TOLERANCES ARE + OR - 1"

SCALE: 1/2"=1'-0"	DATE: 6-28-22	DWG. BY: REM	DWG. NO: 00900DSBSUMP
----------------------	------------------	-----------------	--------------------------