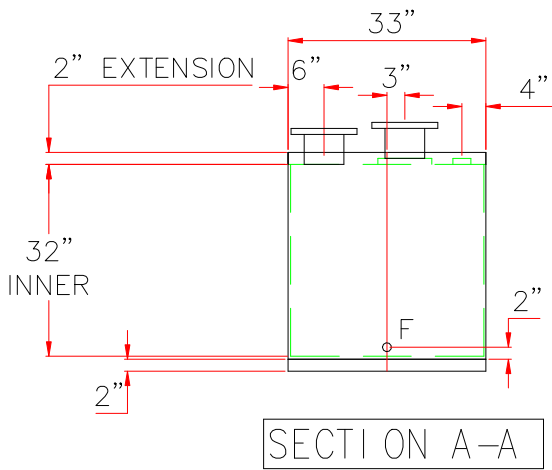
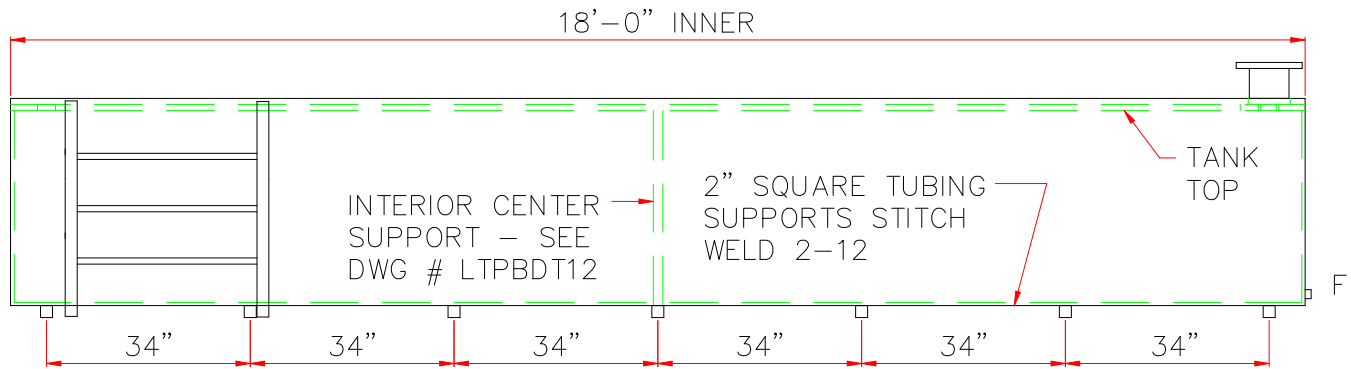
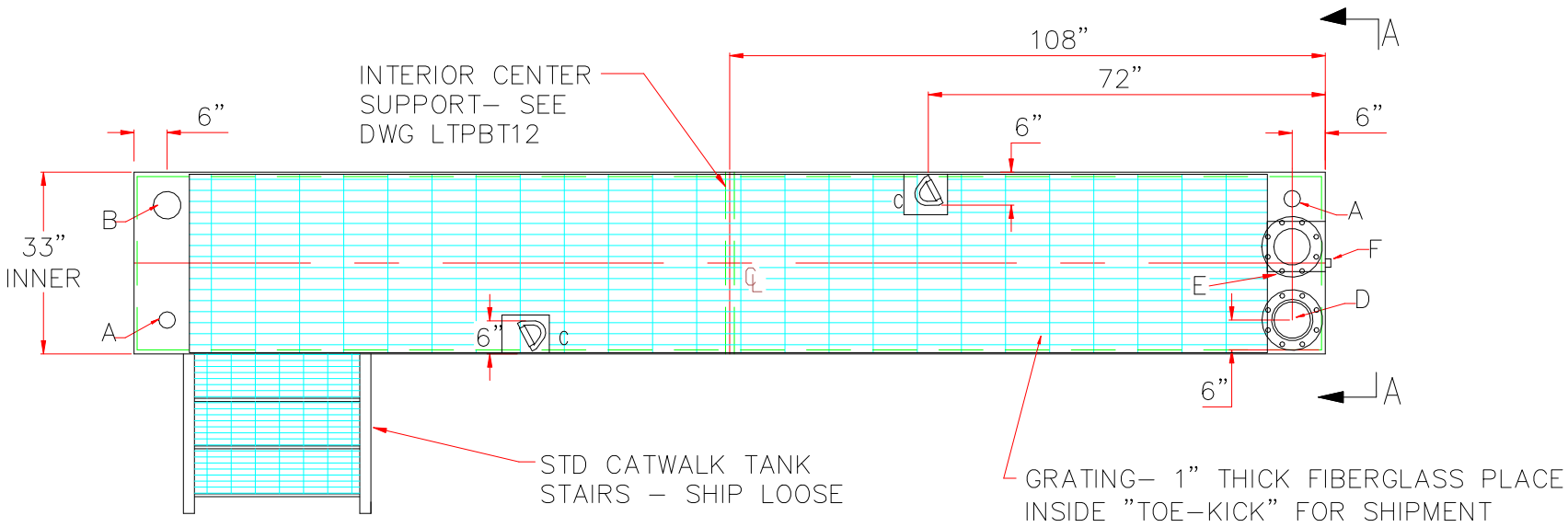


NOTE: ALL RIGHTS RESERVED. THIS DRAWING MUST NOT BE REPRODUCED IN ANY FORM WITHOUT THE WRITTEN PERMISSION OF HIGHLAND TANK®. HIGHLAND TANK® SHALL BE RESPONSIBLE ONLY FOR ITEMS INDICATED ON THIS FABRICATION DRAWING UNLESS OTHERWISE NOTED. CUSTOMER IS RESPONSIBLE FOR VERIFYING CORRECTNESS OF SIZE AND LOCATION OF FITTINGS, ACCESSORIES, AND COATINGS SHOWN ON THIS DRAWING.

TOUCH UP OF FINISHED PAINT IS REQUIRED BY INSTALLATION CONTRACTOR. TOUCH UP PAINT SHIPPED WITH TANK.

SHIP LOOSE: (INSTALLATION ON SITE BY OTHERS)
1/2" BUTTON SIGHT GLASS



DESIGN DATA	
CAPACITY	—987 GALLONS
TYPE	— DOUBLE WALL
NO. REQ.	— —
OPERATING PRESSURE	—ATMOSPHERIC
SPECIFIC GRAVITY	= 1.0
TANK MATERIAL	— MILD CARBON STEEL
THICKNESS — INNER:	10 GAUGE
THICKNESS — OUTER:	10 GAUGE
CONSTRUCTION	—LAP WELD OUTSIDE ONLY
TANK TEST	—UL 142
INT. FINISH	— NONE
EXT. FINISH	—SHOP PRIMER
LABEL	— UL 142 DOUBLE WALL
LEGEND	
A	2" FITTING w/ PLASTIC THREAD PROTECTORS
B	4" FITTING w/ PLASTIC THREAD PROTECTORS
C	LIFT LUGS — FLOP STYLE PER DWG # LTLFLUG
D	6" FFSO 150# FLANGE w/ PLASTIC COVER — PRIMARY EMERGENCY VENT USE
E	6" FFSO 150# FLANGE w/ PLASTIC COVER IN INTERSTICE EXTENSION BOX MARK WITH SPECIAL WARNING LABEL INTERSTITIAL EMERGENCY VENT USE ONLY
F	1/2" FITTING THROUGH OUTER SHELL ONLY WITH BUTTON SITE GLASS

		Highland Tank	
UNLESS NOTED, TOLERANCES ARE +/- 1"			
987 GAL DW CATWALK TANK			
CUSTOMER:			
PROJECT:			
QUOTE NO:		CHK'D BY:	
SCALE:	DATE:	DWG. BY:	DWG. NO:
3/8"=1'-0"			00987CTDW