

NOTE: ALL RIGHTS RESERVED. THIS DRAWING MUST NOT BE REPRODUCED IN ANY FORM WITHOUT THE WRITTEN PERMISSION OF HIGHLAND TANK®. HIGHLAND TANK® SHALL BE RESPONSIBLE ONLY FOR ITEMS INDICATED ON THIS FABRICATION DRAWING UNLESS OTHERWISE NOTED. CUSTOMER IS RESPONSIBLE FOR VERIFYING CORRECTNESS OF SIZE AND LOCATION OF FITTINGS, ACCESSORIES, AND COATINGS SHOWN ON THIS DRAWING.

TOUCH UP OF FINISHED PAINT IS REQUIRED BY INSTALLATION CONTRACTOR. TOUCH UP PAINT SHIPPED WITH TANK.

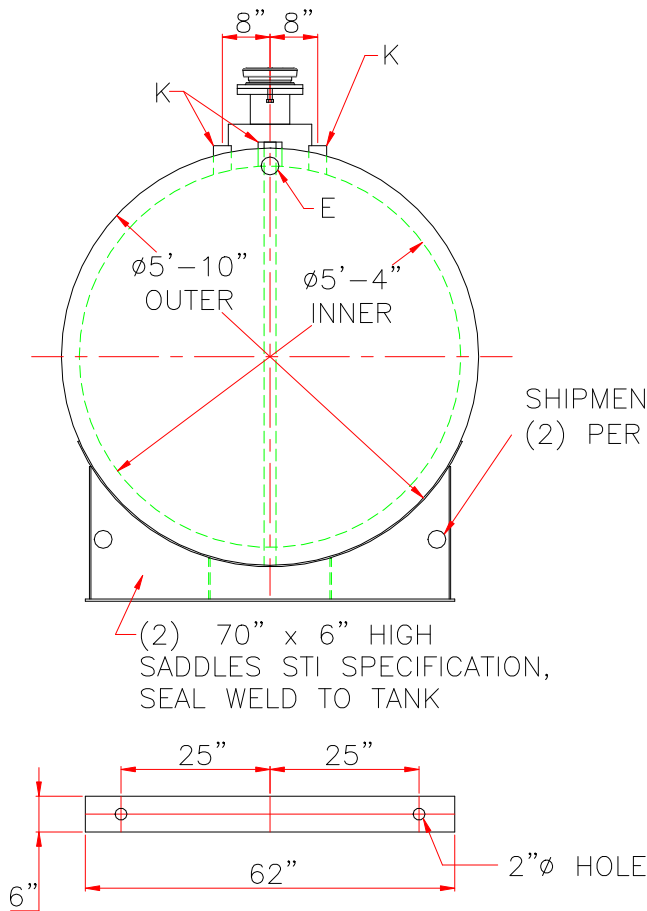
INSTALLED

(1) HIGH-LINK LEVEL MODULE MODEL# LS-CS15-CAP 72" LONG & BUSHING.

SHIP LOOSE: (INSTALLATION ON SITE BY OTHERS)

(2) 6" FLANGED EMERGENCY VENT

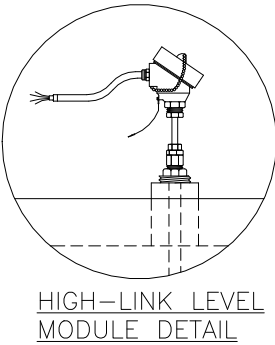
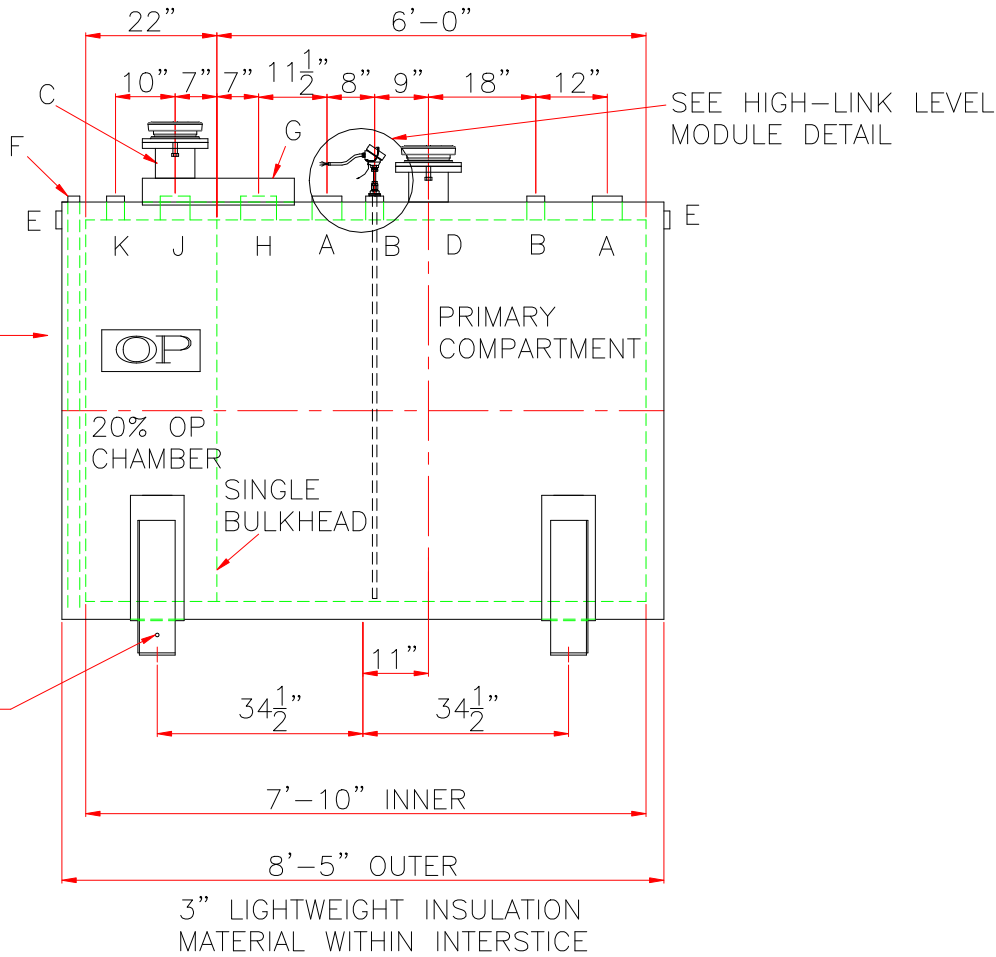
SHIPPING LUGS AS NEEDED



4" INTERSTICE THIS HEAD ONLY

SHIPMENT BANDING HOLES (2) PER SADDLE

5/8"Ø GROUNDING HOLE IN SADDLE



DESIGN DATA

CAPACITY : 1,000 GALLONS
TYPE: FIREGUARD® CYLINDRICAL
FIREGUARD® IS A TRADEMARK OF THE STEEL TANK INSTITUTE
NO. REQ. --
OPERATING PRESSURE -- ATMOSPHERIC
SPECIFIC GRAVITY = 1.0
TANK MATERIAL -- MILD CARBON STEEL
THICKNESS -- INNER -- HEADS AND SHELL -- 7 GAUGE
THICKNESS -- OUTER -- HEADS AND SHELL -- 7 GAUGE
MIN. GAUGE OR THICKNESS (PER U.L. 2085)
CONSTRUCTION -- INNER -- LAP WELD OUTSIDE ONLY
CONSTRUCTION -- OUTER -- LAP WELD OUTSIDE ONLY
TANK TEST -- INNER -- 5 PSIG
OUTER -- 5 PSIG
INT. FINISH -- NONE
EXT. FINISH -- SP-6 BLAST, FINISH PAINT WHITE
LABEL-- UL 2085 AND FIREGUARD® PER sti

LEGEND

A	4" FEMALE FIREGUARD COUPLING	H	6" SCH 40 PIPE
B	2" FEMALE FIREGUARD COUPLING	J	4" FEMALE FIREGUARD COUPLING
C	6" FFSO 150# FLANGE -- PRIMARY EMERGENCY VENT	K	2" FEMALE FIREGUARD COUPLING
D	6" FFSO 150# FLANGE THROUGH OUTER SHELL ONLY, MARK WITH SPECIAL WARNING LABEL	L	--
E	2" FITTING THROUGH OUTER SHELL ONLY WITH CAST IRON PLUG-- MFG USE ONLY		
F	2" INTERSTITIAL MONITOR PIPE -- MALE NPT END		
G	26" LONG x 14" WIDE x 4" HIGH CLOSED TOP STEEL ENCLOSURE WELDED TO OUTER TANK		

NOTES:
STRIKER PLATES ARE NOT SUPPLIED ON FIREGUARDS® UNLESS SPECIFIED

△					
		Highland Tank			
UNLESS NOTED, TOLERANCES ARE +/- 1"					
1,000 GAL 64"Ø CYL. FIREGUARD OP®					
PATENT: 5,695,089 PATENT: 5,809,650					
CUSTOMER:					
PROJECT:					
QUOTE NO:					CHK'D BY:
SCALE: 3/8" = 12"	DATE:	DWG. BY:	DWG. NO: 1000FGCYL640P		