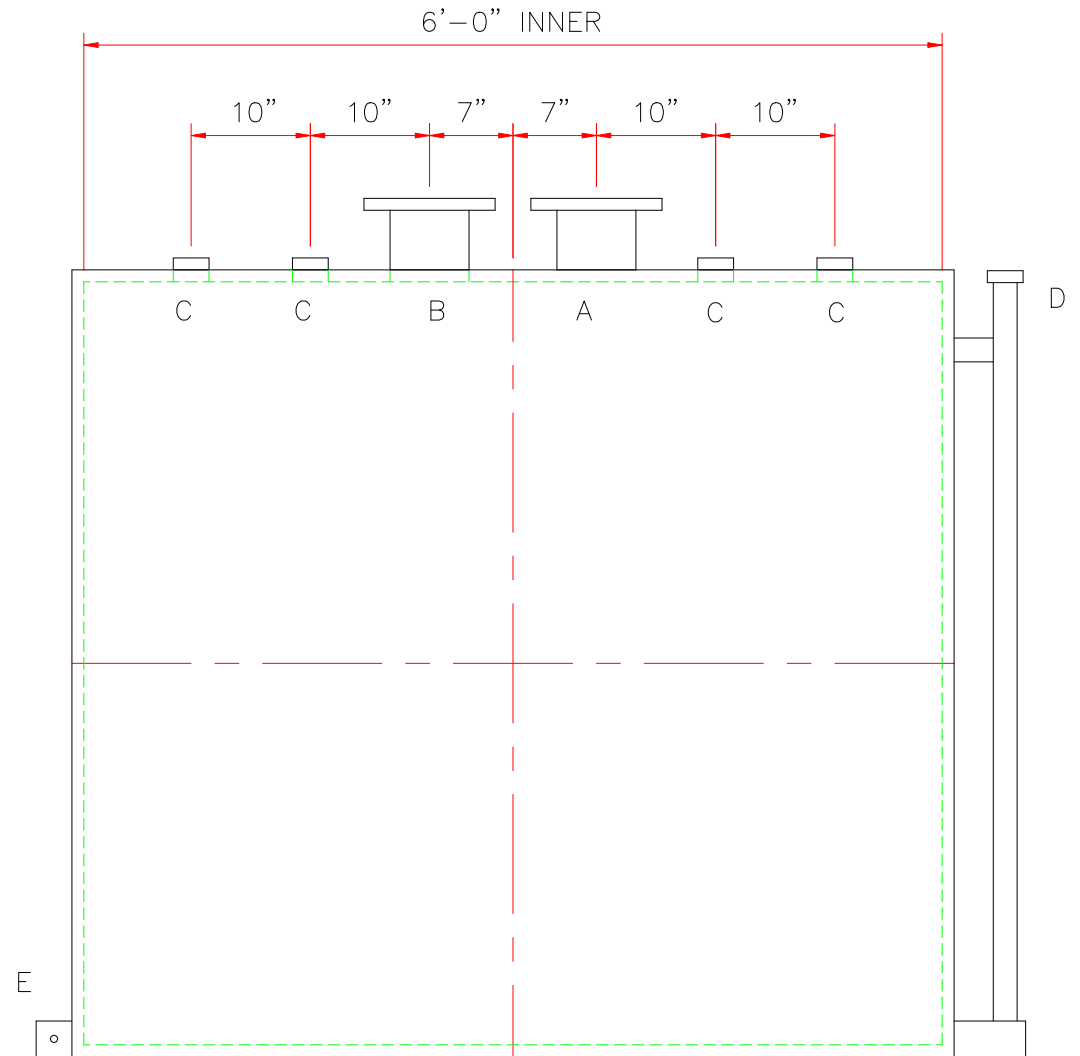
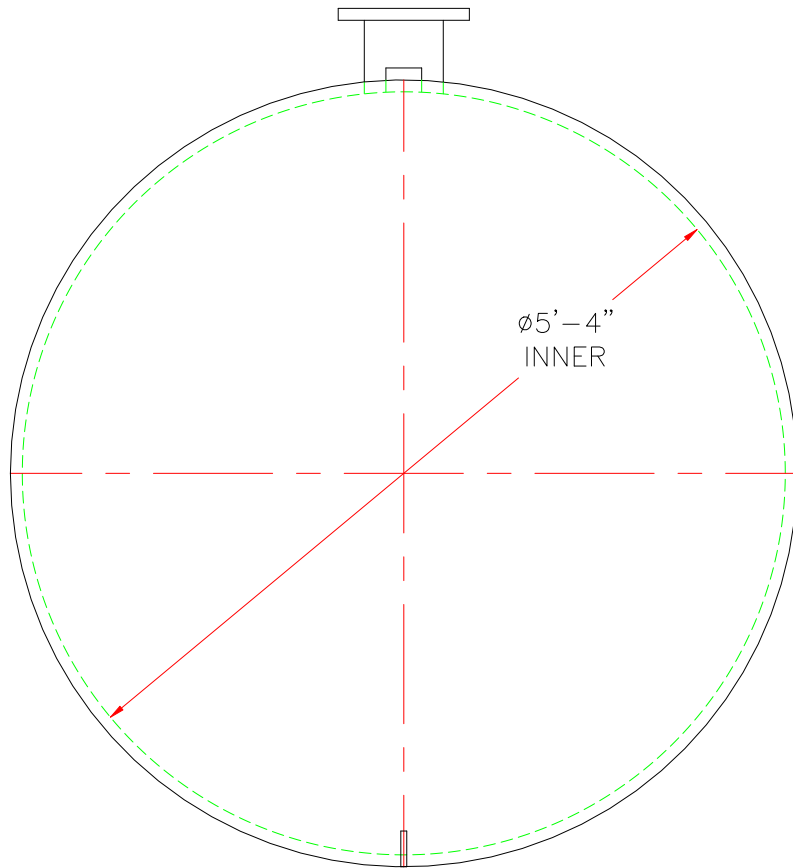



TOUCH UP OF FINISHED PAINT IS  
REQUIRED BY INSTALLATION  
CONTRACTOR. TOUCH UP PAINT SHIPPED  
WITH TANK.



<u>DESIGN DATA</u>	
CAPACITY – 1,000 GALLONS	
TYPE – DOUBLE WALL – TYPE I	
NO. REQ. – –	
OPERATING PRESSURE – ATMOSPHERIC	
SPECIFIC GRAVITY = 1.0	
TANK MATERIAL – MILD CARBON STEEL	
THICKNESS – INNER– HEADS: 7 GA	SHELL: 7 GA
THICKNESS – OUTER– HEADS: 10 GA	SHELL:10 GA
CONSTRUCTION – INNER – LAP WELD OUTSIDE ONLY OUTER – LAP WELD OUTSIDE ONLY	
TANK TEST – INNER – 5 PSIG OUTER – +3 PSIG OR 13”hg VACUUM	
INT. FINISH – NONE –	
EXT. FINISH – SHOP PRIMER –	
LABEL – UL 142	

LEGEND	
A	6" FFSO 150# FLANGE THROUGH OUTER SHELL ONLY, MARK WITH SPECIAL WARNING LABEL INTERSTITIAL EMERGENCY VENT USE ONLY
B	6" FFSO 150# FLANGE – PRIMARY EMERGENCY VENT USE
C	2" FITTING
D	2" INTERSTITIAL MONITOR PIPE
E	3" x 3" PLATE w/ 1/2"Ø (MIN.) HOLE ON CENTER (GROUNDING LUG—ONE REQ'D)
F	—

		<h1>Highland Tank</h1>	
UNLESS NOTED, TOLERANCES ARE $\pm 1"$			
1,000 GAL 64"Ø AG DW HORIZONTAL			
CUSTOMER:			
PROJECT:			
QUOTE NO:		CHK'D BY:	
SCALE: 3/4"=1'-0"	DATE:	DWG. BY:	DWG. NO: 01000AHDW64