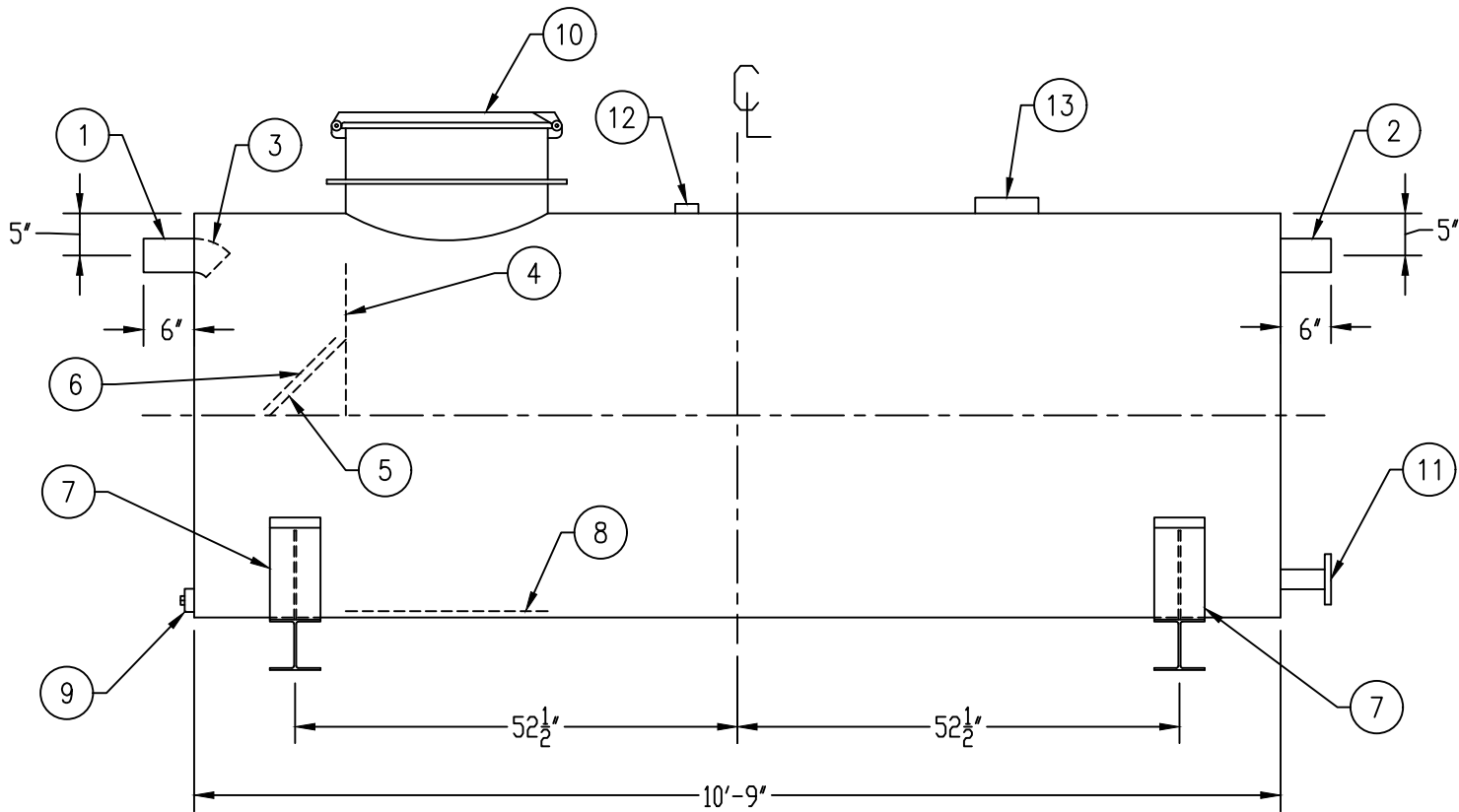
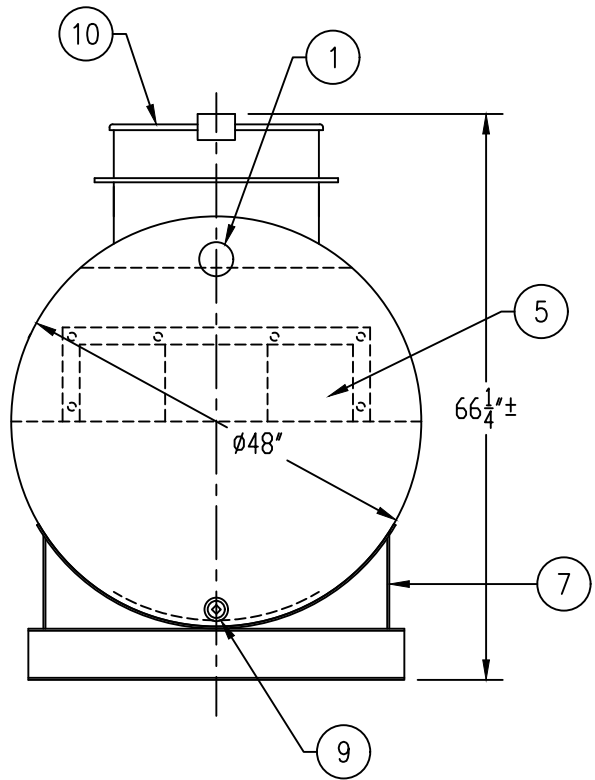
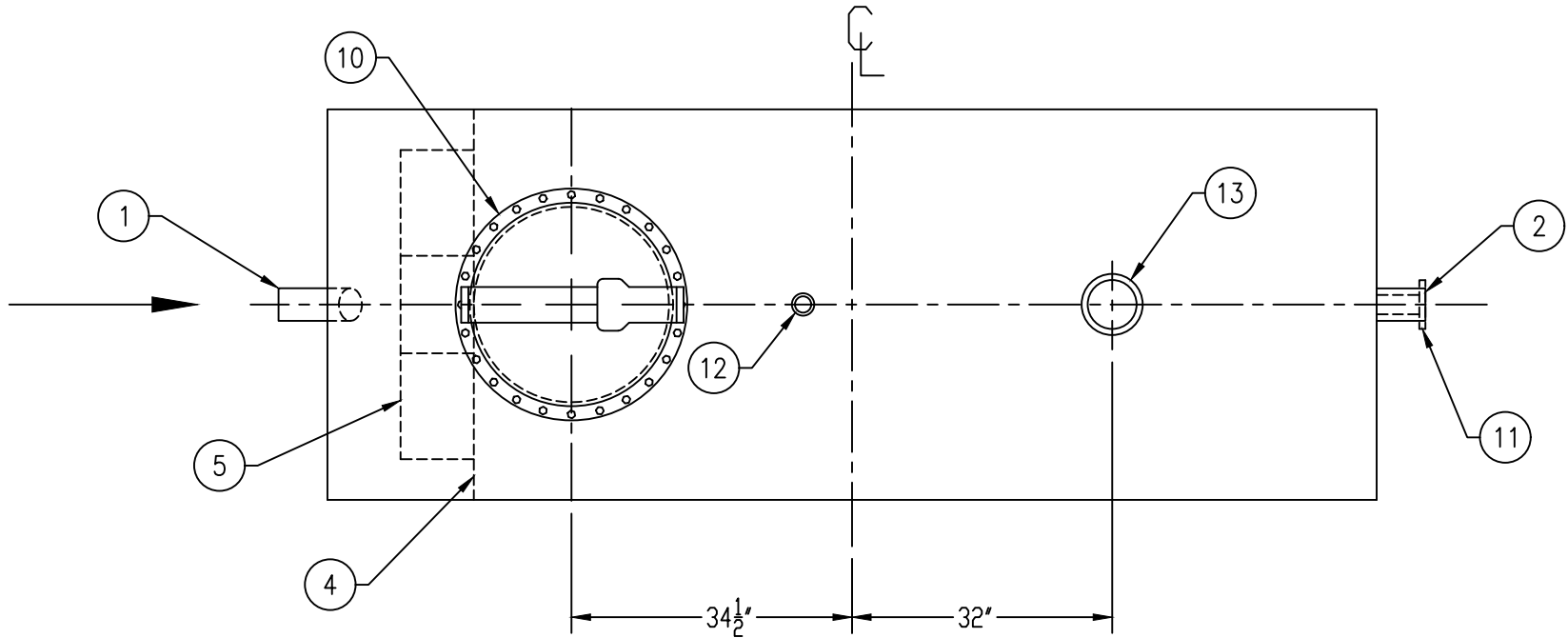


CUSTOMER APPROVAL

THE CUSTOMER HAS REVIEWED THIS DRAWING AND VERIFIED THE ACCURACY OF ALL INFORMATION AND DIMENSIONS.

SIGNED: \_\_\_\_\_

DATE: \_\_\_\_\_



## GENERAL SPECIFICATIONS

QUANTITY: ONE (1)  
MODEL: RCT-1000-48 AC  
CAPACITY: 1,000 GALLONS  
TYPE: SINGLE WALL, ABOVE-GROUND  
MATERIAL: 7 GA CARBON STEEL  
LAP FIT AND WELD INTERIOR AND EXTERIOR SEAMS  
TANK TEST: 3-5 PSI AIR TEST  
SURFACE PREP: SSPC-SP 10 BLAST INTERIOR SURFACES  
SSPC-SP 6 BLAST EXTERIOR SURFACES  
COATING, EXTERIOR: WHITE URETHANE - 3-5 MILS  
COATING, INTERIOR:  
HighDRO®- LINER PLUS POLYURETHANE - 15 MILS  
OPERATING PRESSURE: ATMOSPHERIC

## PROVIDED EQUIPMENT

1. 4"Ø SCH 40 PIPE STUB - INLET
2. 4"Ø SCH 40 PIPE STUB - OVERFLOW
3. 4"Ø 45° DIFFUSION ELBOW
4. UNDERFLOW BAFFLE - 7 GA
5. REMOVABLE DIFFUSION BAFFLE - 7 GA
6. 12" x 12" x 1/4" WEAR PLATE
7. 6" HIGH STANDARD SADDLE - SEAL-WELD TO TANK
8. STRIKER PLATE
9. 2" FNPT WITH STEEL PLUG - DRAIN
10. 24"Ø MANWAY WITH FLANGED EASY-ACCESS HATCH
11. 3"Ø-150# RFSSO FLANGE - SUCTION
12. 2" FNPT - NORMAL TANK VENT
13. 6" FNPT - EMERGENCY VENT

THIS DRAWING IS SUBJECT TO CHANGE AT THE DISCRETION OF THE MANUFACTURER. CONTACT HIGHLAND TANK FOR THE MOST UP-TO-DATE INFORMATION AND DRAWINGS OF OUR PRODUCTS.



# Highland Tank®

HighDRO®-PURE RAINWATER HARVESTING SYSTEM  
1,000 GALLON CISTERN TANK

CUSTOMER:

PROJECT:

QUOTE NO:

ORDER#:

SCALE:

DATE:

DWG. BY:

DWG. NO.:

DIMENSION TOLERANCE: ± 1"

NTS

4/19/21

MGS

RCT-1000-48 AC

NOTE:  
ALL RIGHTS RESERVED. THIS DRAWING, OR ANY PART THEREOF, MUST NOT BE REPRODUCED IN ANY FORM WITHOUT WRITTEN PERMISSION FROM HIGHLAND TANK. UNLESS OTHERWISE NOTED, HIGHLAND TANK SHALL BE RESPONSIBLE ONLY FOR ITEMS INDICATED ON THIS FABRICATION DRAWING. THE CUSTOMER IS RESPONSIBLE FOR VERIFYING THE CORRECTNESS OF THE TYPE, SIZE, AND LOCATION OF ALL FITTINGS, ACCESSORIES, AND COATINGS SHOWN ON THIS DRAWING.