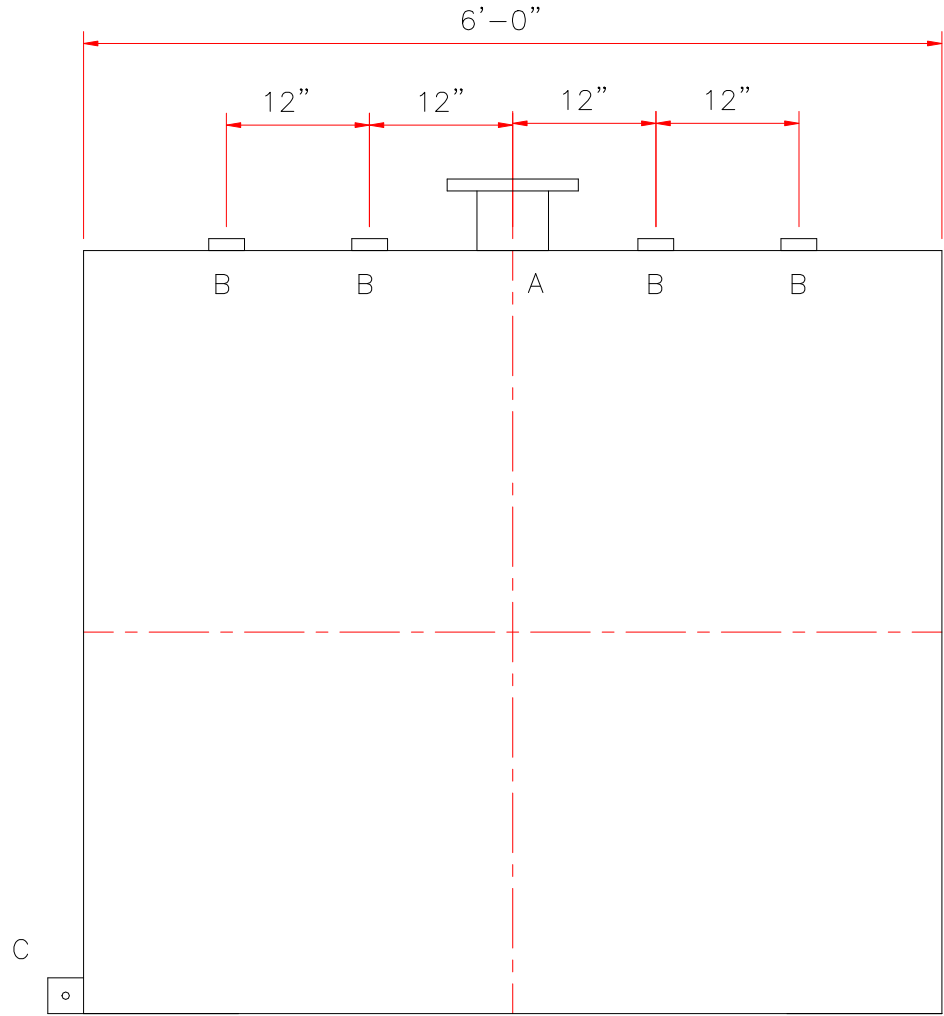
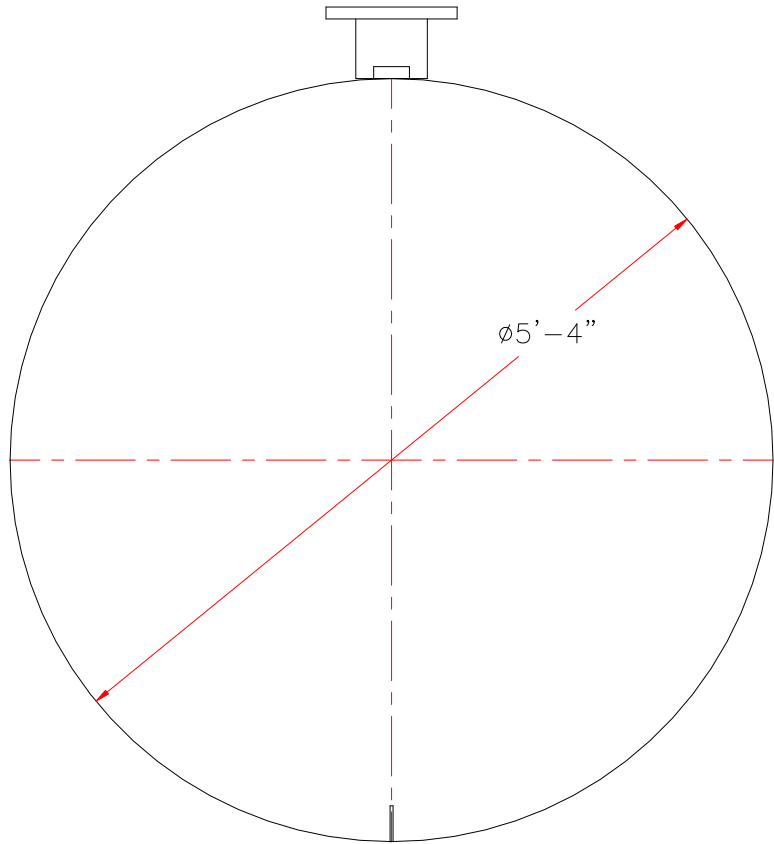



TOUCH UP OF FINISHED PAINT IS
REQUIRED BY INSTALLATION
CONTRACTOR. TOUCH UP PAINT SHIPPED
WITH TANK.



<u>DESIGN DATA</u>	
CAPACITY	1,000 GALLONS
TYPE	SINGLE WALL
NO. REQ.	—
OPERATING PRESSURE	ATMOSPHERIC
SPECIFIC GRAVITY	= 1.0
TANK MATERIAL	MILD CARBON STEEL
THICKNESS — HEADS:	7 GA
THICKNESS — SHELL:	7 GA
CONSTRUCTION	LAP WELD OUTSIDE ONLY —
TANK TEST	5 PSIG —
INT. FINISH	NONE —
EXT. FINISH	SHOP PRIMER —
LABEL	UL 142

<u>LEGEND</u>	
A	6" FFSO 150# FLANGE – PRIMARY EMERGENCY VENT USE ONLY
B	2" FITTING
C	FB3 X 1/4" X 3" WITH 5/8"Ø HOLE ON CL GROUNDING LUG
D	–
E	–
F	–

		<h1>Highland Tank</h1>	
UNLESS NOTED, TOLERANCES ARE $\pm 1"$			
1,000 GAL 64"Ø SW AG HORIZONTAL			
CUSTOMER:			
PROJECT:			
QUOTE NO:		CHK'D BY:	
SCALE: 3/4" = 12"	DATE:	DWG. BY:	DWG. NO: 01000AHSW64