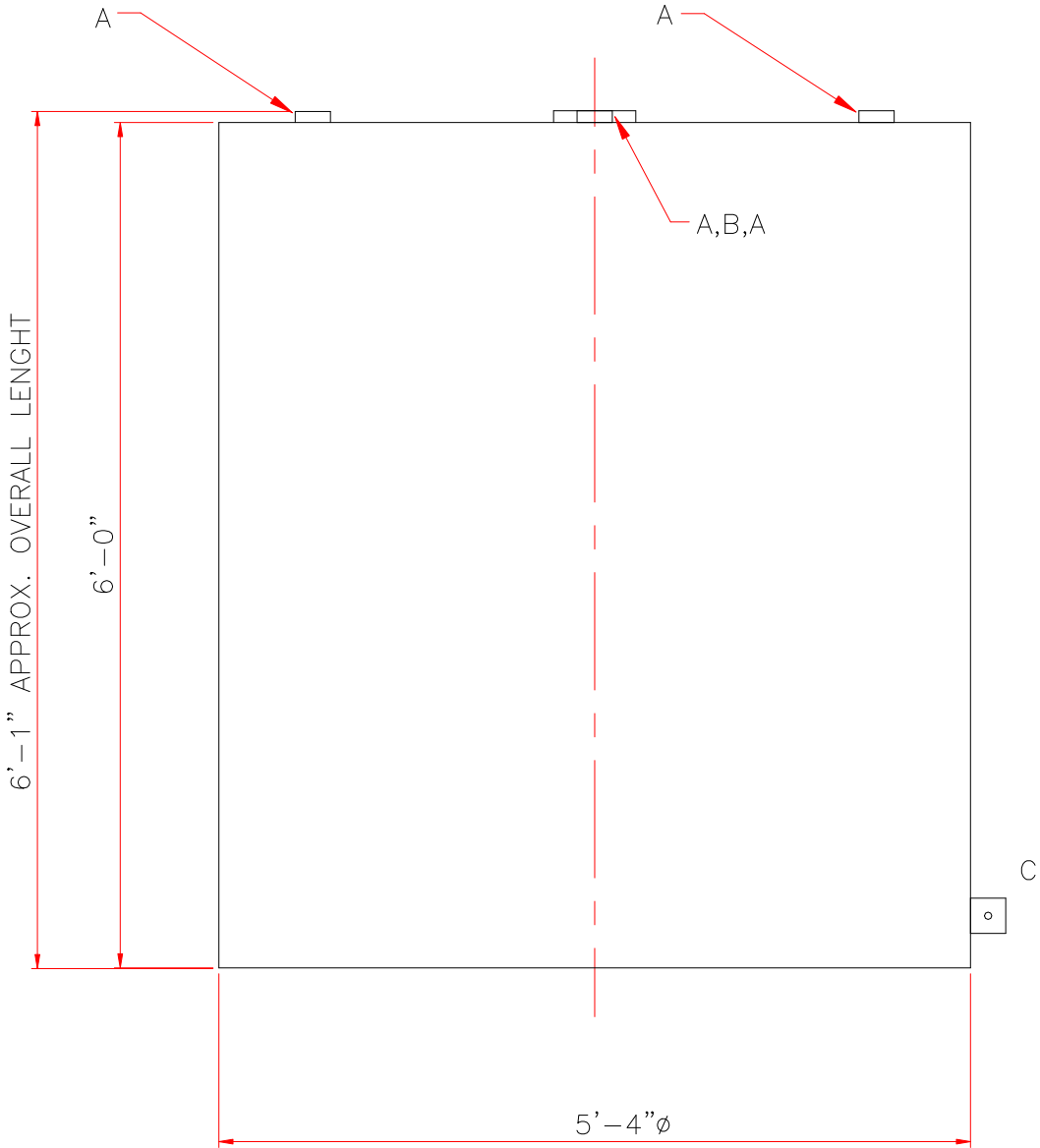
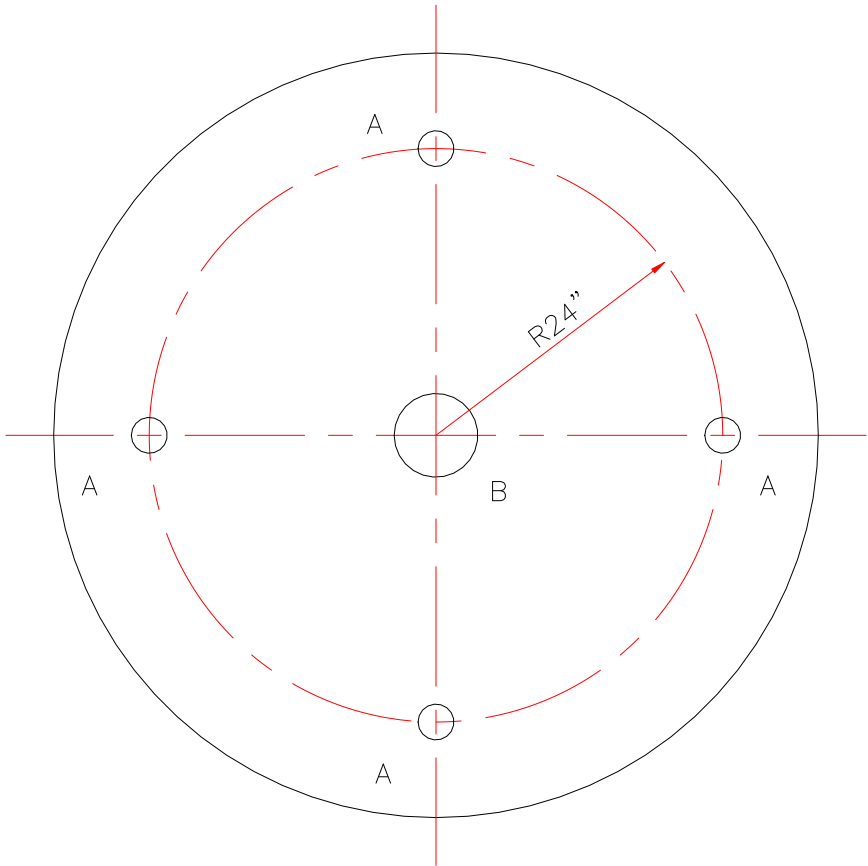


NOTE: ALL RIGHTS RESERVED. THIS DRAWING MUST NOT BE REPRODUCED IN ANY FORM WITHOUT THE WRITTEN PERMISSION OF HIGHLAND TANK. HIGHLAND TANK SHALL BE RESPONSIBLE ONLY FOR ITEMS INDICATED ON THIS FABRICATION DRAWING UNLESS OTHERWISE NOTED. CUSTOMER IS RESPONSIBLE FOR VERIFYING CORRECTNESS OF SIZE AND LOCATION OF FITTINGS, ACCESSORIES, AND COATINGS SHOWN ON THIS DRAWING.

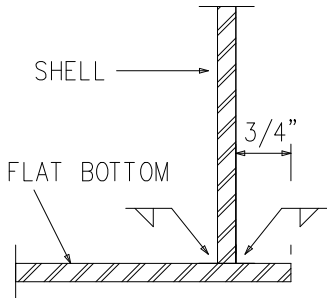
TOUCH UP OF FINISHED PAINT IS REQUIRED BY INSTALLATION CONTRACTOR. TOUCH UP PAINT SHIPPED WITH TANK.

- NOTES
- SEE PLAN VIEW FOR TRUE ORIENTATION AND LOCATION OF FITTING
 - LIFTING LUGS FOR UNLOADING UNIT & STANDING UNIT UPRIGHT TO BE PLACED AS NEEDED BY FABRICATION SHOP
 - A 3x3x¼” STEEL GROUNDING LUG WITH A 5⁄8”ø HOLE IN CENTER TO BE PLACED ON SHELL AT BOTTOM OF TANK IN LINE WITH LIFTING LUGS




DESIGN DATA
CAPACITY – 1,000 GALLONS
TYPE – SINGLE WALL ABOVEGROUND VERTICAL
NO. REQ. – –
OPERATING PRESSURE – ATMOSPHERIC
SPECIFIC GRAVITY = 1.0
TANK MATERIAL – MILD CARBON STEEL
THICKNESS – TOP: 7 GA FLAT TOP
THICKNESS – BOTTOM: 7 GA FLAT FLANGE
THICKNESS – SHELL: 7 GA FLAT FLANGE
CONSTRUCTION – LAP WELD OUTSIDE ONLY
TANK TEST – 2 PSIG
INT. FINISH – NONE
EXT. FINISH – SHOP PRIMER
LABEL – UL 142

LEGEND	
A	2” FNPT FITTING
B	6” FNPT FITTING (PRIMARY VENT USE)
C	GROUNDING LUG WITH 5/8” HOLE
D	–
E	–
F	



BOTTOM JOINT DETAIL

△	–		
	Highland Tank		
UNLESS NOTED, TOLERANCES ARE +/- 1"			
1,000 GAL 64”ø SW VERTICAL TANK			
CUSTOMER:			
PROJECT:			
QUOTE NO:		CHK'D BY:	
SCALE: 3/4"=1'-0"	DATE:	DWG. BY:	DWG. NO.: 01000AVSW64