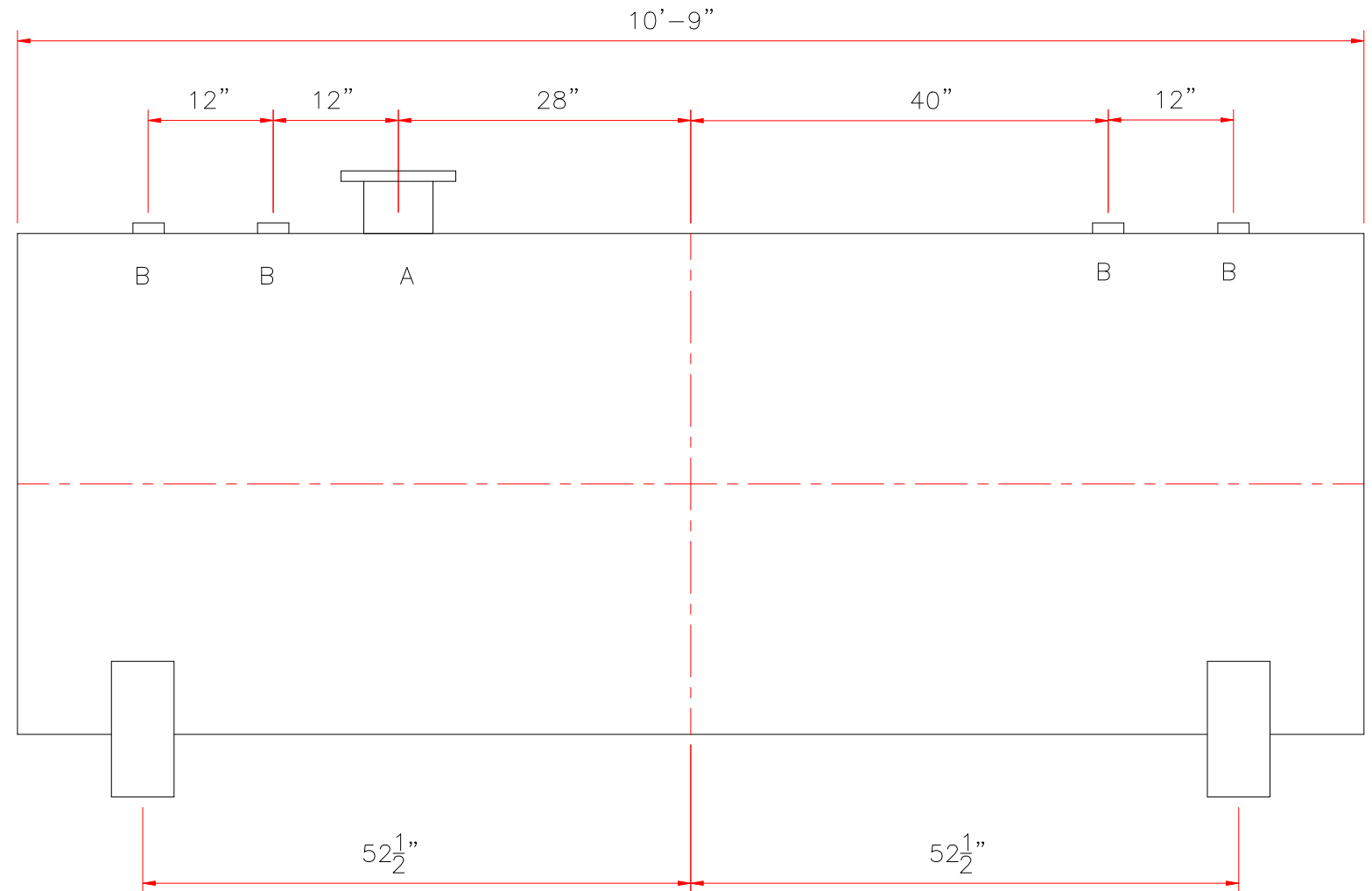
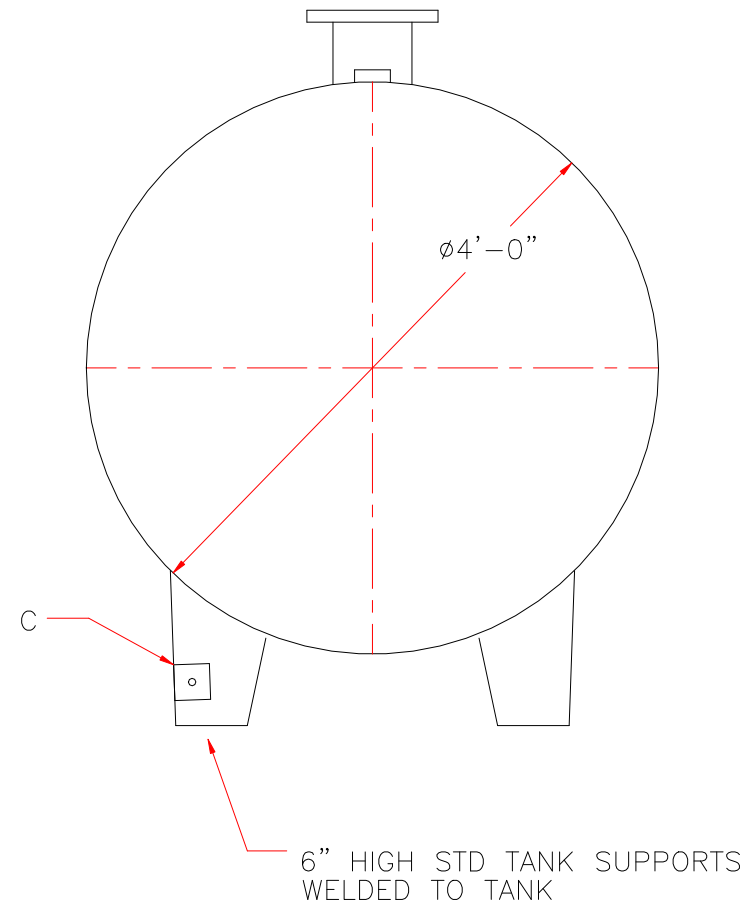


TOUCH UP OF FINISHED PAINT IS
REQUIRED BY INSTALLATION
CONTRACTOR. TOUCH UP PAINT SHIPPED
WITH TANK.



DESIGN DATA
CAPACITY – 1000 GALLONS
TYPE – SINGLE WALL
NO. REQ. – –
OPERATING PRESSURE – ATMOSPHERIC
SPECIFIC GRAVITY = 1.0
TANK MATERIAL – MILD CARBON STEEL
THICKNESS – HEADS: 7 GAUGE
THICKNESS – SHELL: 7 GAUGE
CONSTRUCTION – LAP WELD OUTSIDE ONLY
TANK TEST – 5 PSIG
INT. FINISH – NONE
EXT. FINISH – SHOP PRIMER
LABEL – UL 142

<u>LEGEND</u>	
A	6" FFSO 150# FLANGE – PRIMARY EMERGENCY VENT USE
B	2" FITTING
C	3" x 3" PLATE w/ 1/2"ϕ (MIN.) HOLE ON CENTER (GROUNDING LUG—ONE REQ'D)
D	—
E	—
F	—

		<h1>Highland Tank</h1>	
UNLESS NOTED, TOLERANCES ARE +/- 1"			
1,000 GALLON 48"Ø SW BDH TANK			
CUSTOMER:			
PROJECT:			
QUOTE NO:		CHK'D BY:	
SCALE: 3/4" = 12"	DATE:	DWG. BY:	DWG. NO: 01000BDHSW48GA7