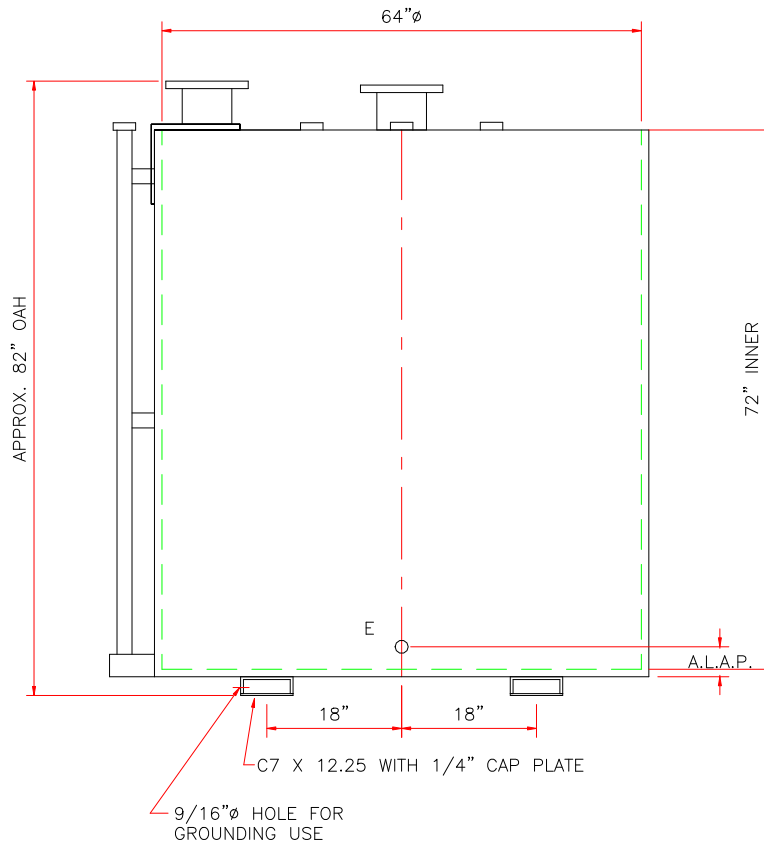
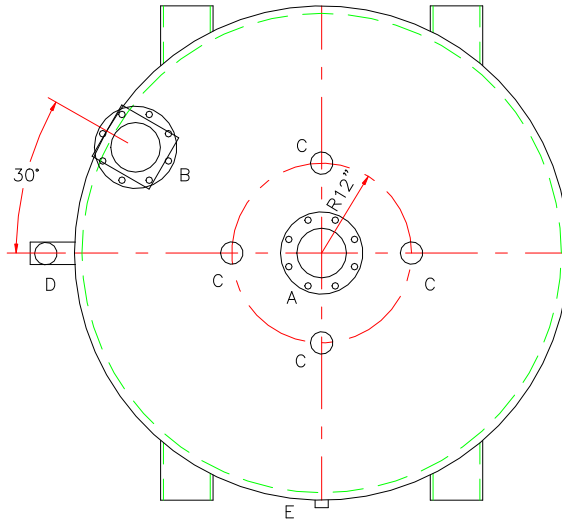


NOTE: ALL RIGHTS RESERVED. THIS DRAWING MUST NOT BE REPRODUCED IN ANY FORM WITHOUT THE WRITTEN PERMISSION OF HIGHLAND TANK & MFG. CO. HIGHLAND TANK & MFG. CO. SHALL BE RESPONSIBLE ONLY FOR ITEMS INDICATED ON THIS FABRICATION DRAWING UNLESS OTHERWISE NOTED. CUSTOMER IS RESPONSIBLE FOR VERIFYING CORRECTNESS OF SIZE AND LOCATION OF FITTINGS, ACCESSORIES, AND COATINGS SHOWN ON THIS DRAWING.

TOUCH UP OF FINISHED PAINT IS REQUIRED BY INSTALLATION CONTRACTOR. TOUCH UP PAINT SHIPPED WITH TANK.



NOTES

1. SEE PLAN VIEW FOR TRUE ORIENTATION AND LOCATION OF FITTING
2. LIFTING LUGS FOR UNLOADING UNIT & STANDING UNIT UPRIGHT TO BE PLACED AS NEEDED BY FABRICATION SHOP

DESIGN DATA

CAPACITY	— 1,000 GALLONS
TYPE	— BDV2 DOUBLE WALL
NO. REQ.	—
OPERATING PRESSURE	— ATMOSPHERIC
SPECIFIC GRAVITY	= 1.0
TANK MATERIAL	— MILD CARBON STEEL
THICKNESS	— TOP— SINGLE WALL 7 GA FLAT FLANGED
THICKNESS	— INNER— SHELL: 7 GA BOTTOM: 7 GA
THICKNESS	— OUTER— SHELL: 10 GA BOTTOM: 10 GA
CONSTRUCTION	— LAP WELD INNER & OUTER
TOP & BOTTOM HEADS	ARE FLAT FLANGED
TANK TEST	— INNER: 2 PSIG
	OUTER: +2 PSIG OR 13"hg VACUUM
INT. FINISH	— NONE
EXT. FINISH	— SHOP PRIMER
LABEL	— UL 142

LEGEND

A	6" FFSO 150# FLANGE — PRIMARY EMERGENCY VENT USE
B	6" FFSO 150# FLANGE, SECONDARY EMERGENCY VENT IN INTERSTICE EXTENSION BOX, MARK w/ SPECIAL WARNING LABEL
C	2" FNPT FITTING
D	2" INTERSTITIAL MONITOR PIPE
E	3/4" FNPT FITTING
F	—

△					
		Highland Tank			
UNLESS NOTED, TOLERANCES ARE +/- 1"					
1,000 GAL 64"Ø BDV2 DW VERT. TANK					
CUSTOMER:					
PROJECT:					
QUOTE NO:				CHK'D BY:	
SCALE:	DATE:	DWG. BY:	DWG. NO:		
3/4" = 12"			01000BDV2DW64		