

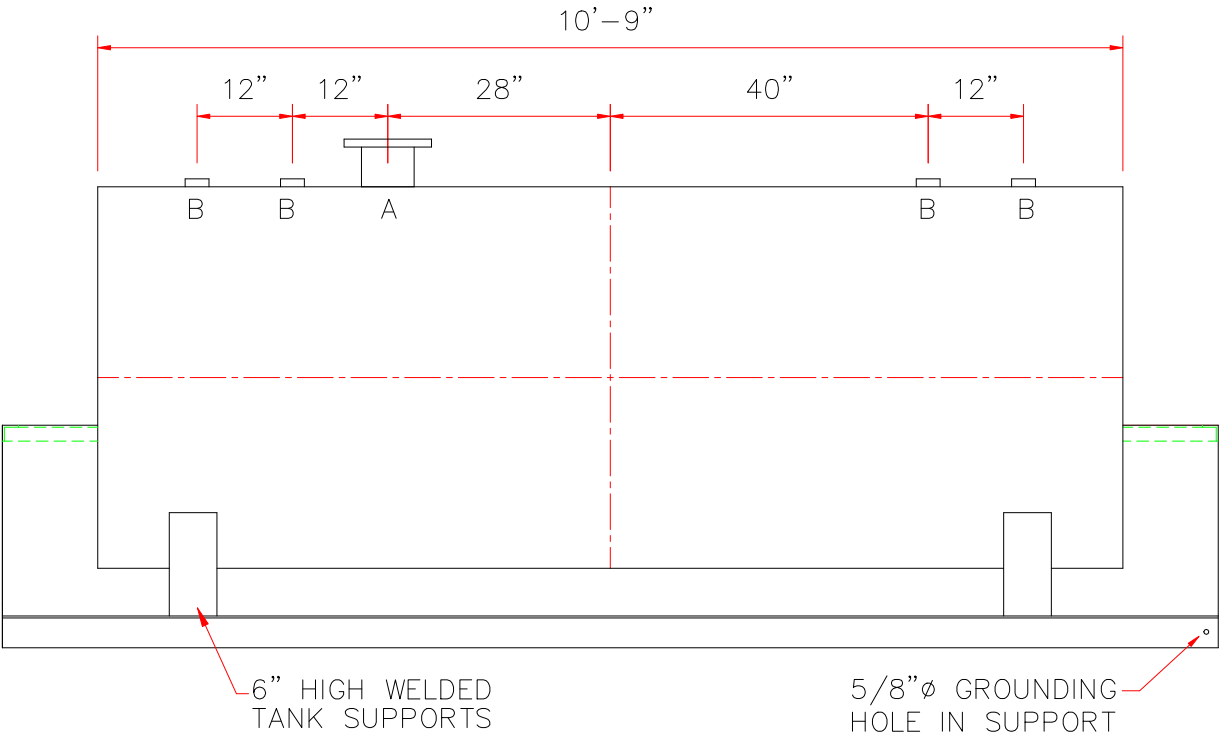
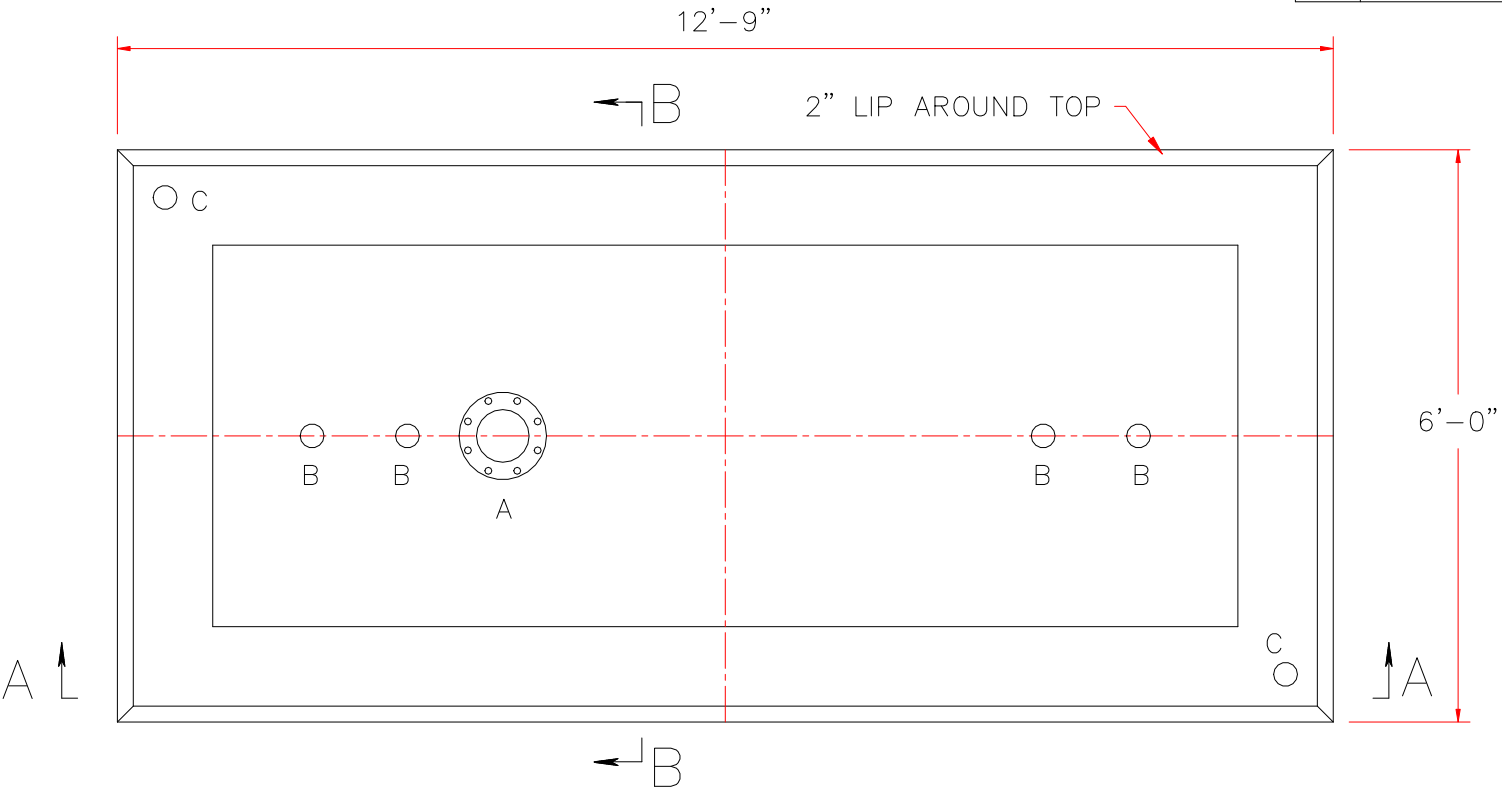
NOTE: ALL RIGHTS RESERVED. THIS DRAWING MUST NOT BE REPRODUCED IN ANY FORM WITHOUT THE WRITTEN PERMISSION OF HIGHLAND TANK®. HIGHLAND TANK® SHALL BE RESPONSIBLE ONLY FOR ITEMS INDICATED ON THIS FABRICATION DRAWING UNLESS OTHERWISE NOTED. CUSTOMER IS RESPONSIBLE FOR VERIFYING CORRECTNESS OF SIZE AND LOCATION OF FITTINGS, ACCESSORIES, AND COATINGS SHOWN ON THIS DRAWING.

TOUCH UP OF FINISHED PAINT IS REQUIRED BY INSTALLATION CONTRACTOR. TOUCH UP PAINT SHIPPED WITH TANK.

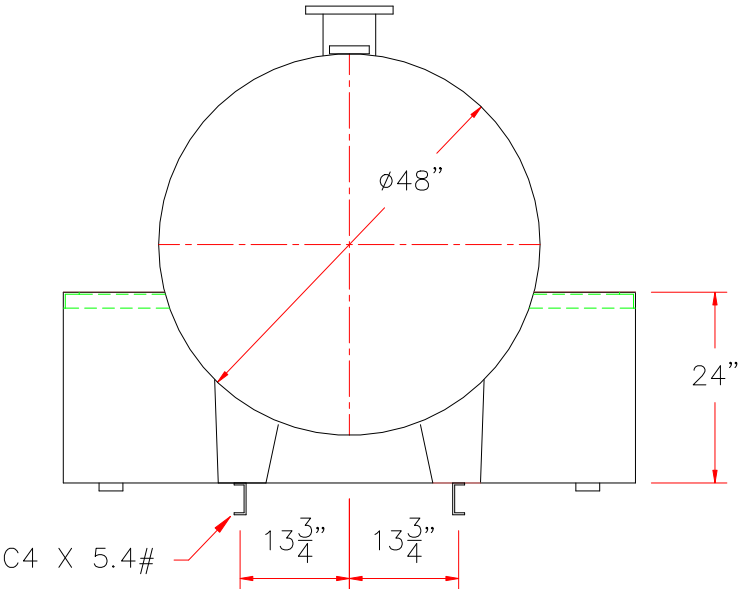
LEGEND	
A	6" FFSO 150# FLANGE – PRIMARY EMERGENCY VENT USE
B	2" FITTING
C	2" FNPT FITTING (2 REQ'D) IN OPPOSITE CORNERS OF THE DIKE
D	

TANK DESIGN DATA
CAPACITY – 1000 GALLONS
TYPE – ABOVEGROUND HORIZONTAL WITH 110% DIKE
NO. REQ. – –
OPERATING PRESSURE – ATMOSPHERIC
SPECIFIC GRAVITY = 1.0
TANK MATERIAL – MILD CARBON STEEL
THICKNESS – HEADS – 10 GAUGE
THICKNESS – SHELL – 10 GAUGE
CONSTRUCTION – LAP WELD OUTSIDE ONLY
TANK TEST – 5 PSIG
INT. FINISH – NONE
EXT. FINISH – SHOP PRIMER
LABEL – UL 142

DIKE DESIGN DATA
CAPACITY – 1100 GALLONS
TANK MATERIAL – MILD CARBON STEEL
THICKNESS – ALL – 7 GAUGE
CONSTRUCTION – WELDED
FINISH – ALL – SAME AS TANK EXTERIOR



SECTION A – A



SECTION B – B

			
		<b>Highland Tank</b>	
UNLESS NOTED, TOLERANCES ARE +/- 1"			
1,000 GAL 48"Ø DIKE TANK			
CUSTOMER:			
PROJECT:			
QUOTE NO:		CHK'D BY:	
SCALE: 1/2" = 12"	DATE:	DWG. BY:	DWG. NO.: 01000DK48