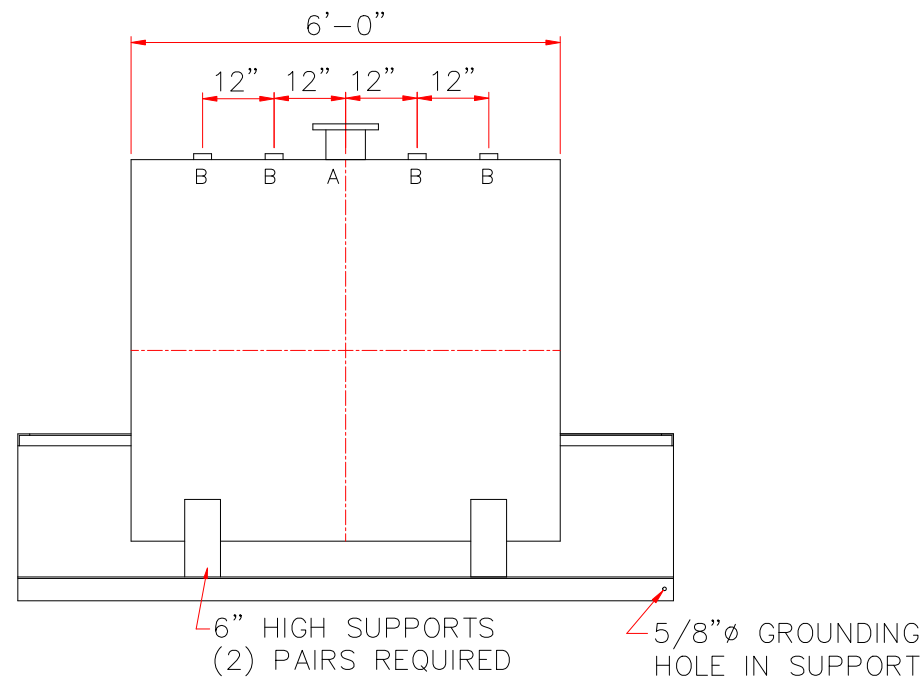
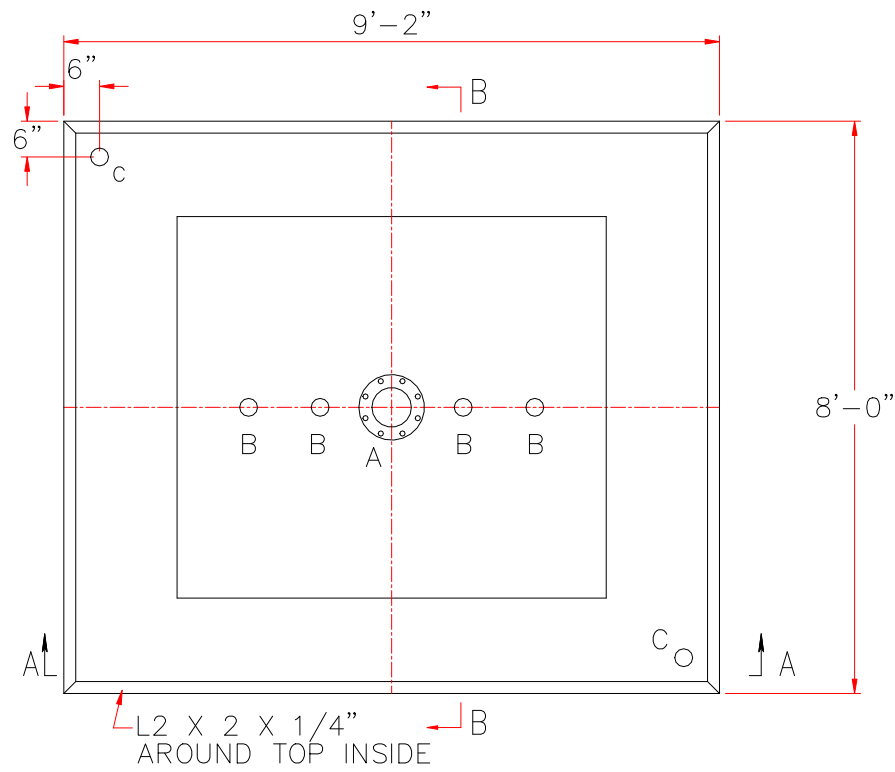
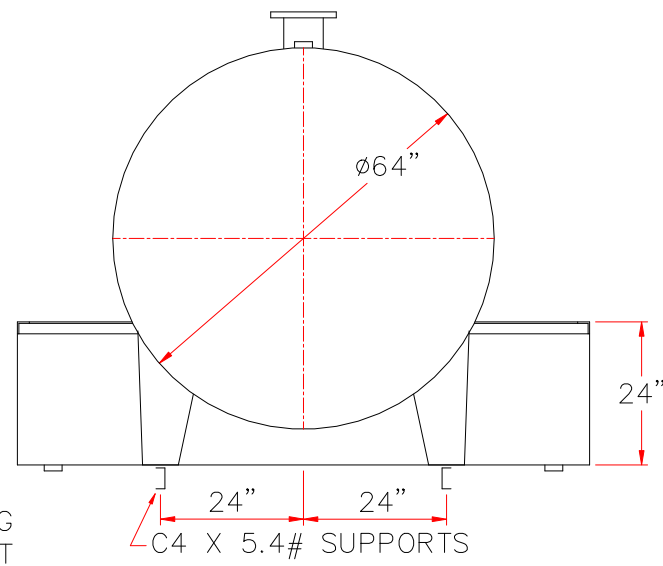


NOTE: ALL RIGHTS RESERVED. THIS DRAWING MUST NOT BE REPRODUCED IN ANY FORM WITHOUT THE WRITTEN PERMISSION OF HIGHLAND TANK. HIGHLAND TANK SHALL BE RESPONSIBLE ONLY FOR ITEMS INDICATED ON THIS FABRICATION DRAWING UNLESS OTHERWISE NOTED. CUSTOMER IS RESPONSIBLE FOR VERIFYING CORRECTNESS OF SIZE AND LOCATION OF FITTINGS, ACCESSORIES, AND COATINGS SHOWN ON THIS DRAWING.

TOUCH UP OF FINISHED PAINT IS REQUIRED BY INSTALLATION CONTRACTOR. TOUCH UP PAINT SHIPPED WITH TANK.



SECTION A-A



SECTION B-B

TANK DESIGN DATA

CAPACITY	1,000 GALLONS
TYPE	ABOVEGROUND HORIZONTAL WITH 110% DIKE
NO. REQ.	--
OPERATING PRESSURE	ATMOSPHERIC
SPECIFIC GRAVITY	1.0
TANK MATERIAL	MILD CARBON STEEL
THICKNESS - HEADS	7 GA
THICKNESS - SHELL	7 GA
CONSTRUCTION	LAP WELD OUTSIDE ONLY
TANK TEST	5 PSIG
INT. FINISH	NONE
EXT. FINISH	SHOP PRIMER
LABEL	UL 142

DIKE DESIGN DATA

CAPACITY	1,100 GALLONS
TANK MATERIAL	MILD CARBON STEEL
THICKNESS - ALL	7 GA
CONSTRUCTION	WELDED
FINISH - ALL	SAME AS TANK EXTERIOR

LEGEND

A	6" FFSO 150# FLANGE - PRIMARY EMERGENCY VENT USE
B	2" FITTING
C	2" FNPT FITTING (2 REQ'D) IN OPPOSITE CORNERS OF THE DIKE
D	-
E	-

 Highland Tank	
UNLESS NOTED, TOLERANCES ARE +/- 1"	
1,000 GAL 64" ϕ DIKE TANK	
CUSTOMER:	
PROJECT:	
QUOTE NO:	CHK'D BY:
SCALE: 3/8"=1'-0"	DATE:
DWG. BY:	DWG. NO: 01000DK64