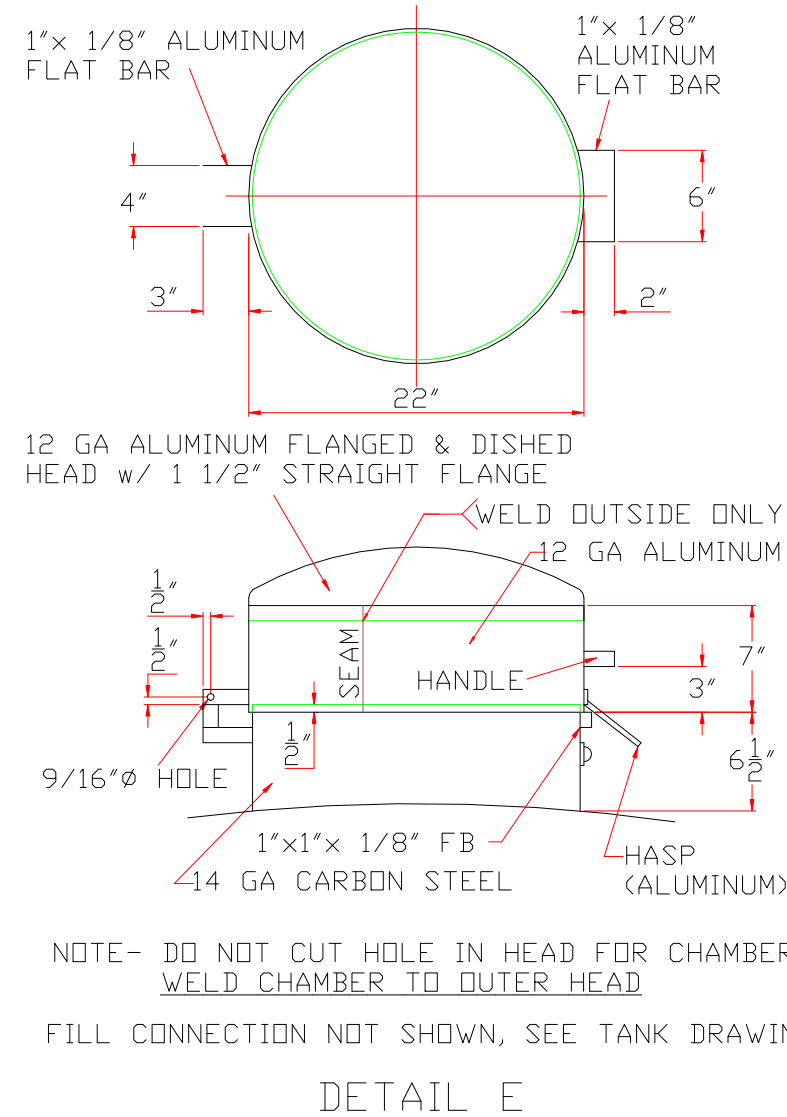
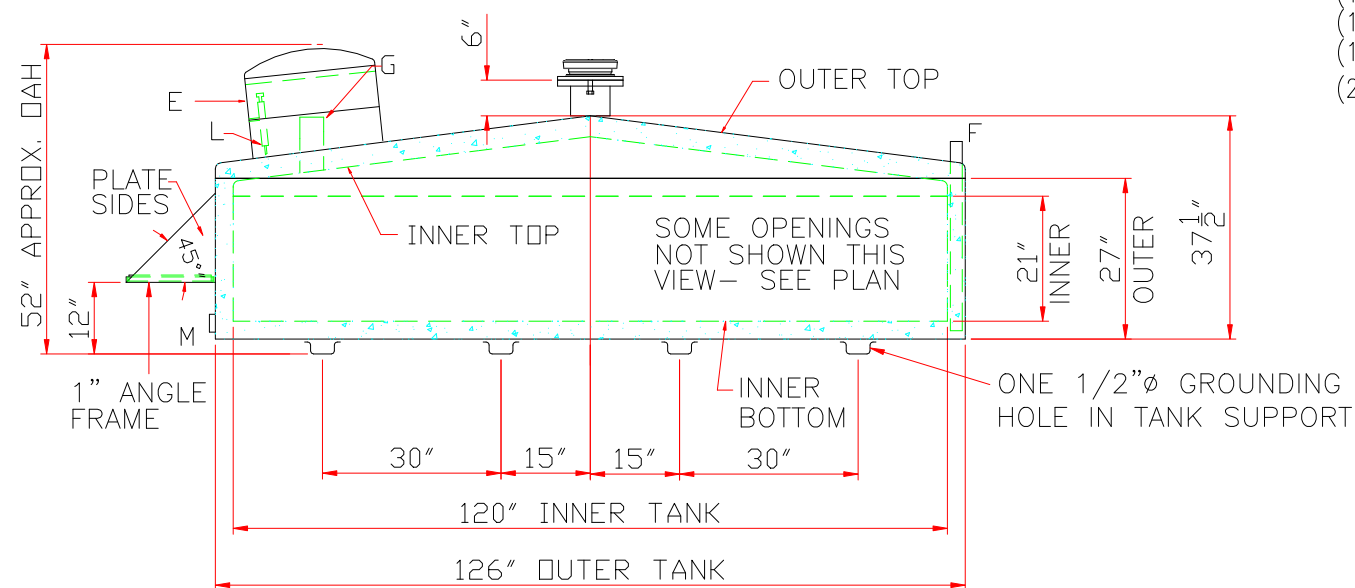


TOUCH UP OF FINISHED PAINT IS
REQUIRED BY INSTALLATION
CONTRACTOR. TOUCH UP PAINT SHIPPED
WITH TANK.

Technical drawing of a circular vessel cross-section. The drawing includes the following components and dimensions:

- Outer Shell:** A thick circular boundary.
- Inner Shell:** A dashed green circular boundary.
- Insulation:** A blue hatched area between the inner and outer shells, labeled "LIGHTWEIGHT INSULATION MATERIAL WITHIN INTERSTICE".
- Central Components:**
 - A:** A central circular component with a flange.
 - B:** A small circular component at the top.
 - C:** A small circular component at the bottom.
 - D:** A small circular component on the right.
 - E:** A small circular component on the left.
 - F:** A small circular component on the right, near the outer shell.
 - G:** A small circular component on the left, near the outer shell.
 - H:** A small circular component on the left, near the outer shell.
 - I:** A small circular component on the left, near the outer shell.
 - J:** A small circular component on the left, near the outer shell.
 - K:** A small circular component on the left, near the outer shell.
 - L:** A small circular component on the left, near the outer shell.
- Dimensions:**
 - 15":** Horizontal distance from the center to the left edge of the insulation.
 - 30":** Vertical distance from the center to the bottom edge of the insulation.
 - 12":** Horizontal distance from the center to the right edge of the insulation.
 - 15":** Vertical distance from the center to the top edge of the insulation.
 - R47":** Radius of the inner shell.
 - 45°:** Angle between the horizontal centerline and the line connecting the center to the bottom component (C).
- Other Labels:**
 - STEP w/ 1" THK FIBERGLASS GRATING INLAY:** A label pointing to the insulation area.
 - INNER SHELL:** A label pointing to the dashed green boundary.



SHIP LOOSE (INSTALLATION BY OTHERS)

- (1) KRUEGER GAUGE
- (1) 2"Øx 96" LONG GALVANIZED PIPE (TBE)
- (1) 2" MUSHROOM VENT
- (2) 6" FLANGED EMERGENCY VENTS

CAPACITY – 1000 GALLONS	
TANK MATERIAL – MILD CARBON STEEL	
THICKNESS – INNER: 10 GA MIN.	
THICKNESS – OUTER: 7 GA MIN.	
INNER & OUTER TOP– STD FLANGED CONE	
CONSTRUCTION – LAP WELD OUTSIDE ONLY	
TANK TEST – PER UL 2085	
INT. FINISH – NONE	
EXT. FINISH – SP6 BLAST, FIREGUARD WHITE PAINT SYSTEM	
TANK SUPPORTS– 7 GA x 4” WIDE X 2” DEEP PRESS BROKE ”U”	
LABEL – UL 2085 AND FIREGUARD PER STI	
SPECIFIC GRAVITY = 1.0	
<u>FITTING LEGEND</u>	
A	6” FFSD 150# FLANGE – PRIMARY EMERGENCY VENT
B	3” FG CPLG (SUCTION)
C	4” FG CPLG (SPARE)
D	2” FG CPLG (NORMAL VENT)
E	22”Ø CHAMBER WITH HINGED ALUMINUM LID, SEE DETAIL E (ACCESS TO FILL)
F	2” INTERSTITIAL MONITOR PIPE– END WITH MALE NPT
G	4” FG CPLG WITH LOCKING FILL CAP (FILL)
H	2” FG CPLG (GAUGE)
J	–
K	6” FFSD 150# FLANGE THROUGH OUTER SHELL ONLY, MARK WITH SPECIAL WARNING LABEL INTERSTITIAL EMERGENCY VENT USE ONLY
L	SINGLE STROKE HANDPUMP & BRK’T
M	2” FITTING FOR MFG PURPOSE ONLY



Highland Tank

UNLESS NOTED, TOLERANCES ARE $\pm 1"$

1,000 GAL FIRE HOPPER™

CUSTOMER:

PROJECT:

QUOTE NO:

CHK'D BY:

SCALE:
3/8"=1'-0"

DWG. BY:

DWG. NO.:

DWG. NO.: 01000FGH

