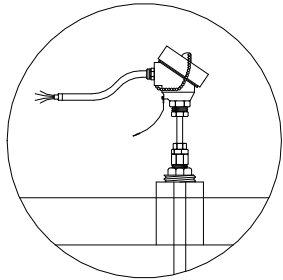
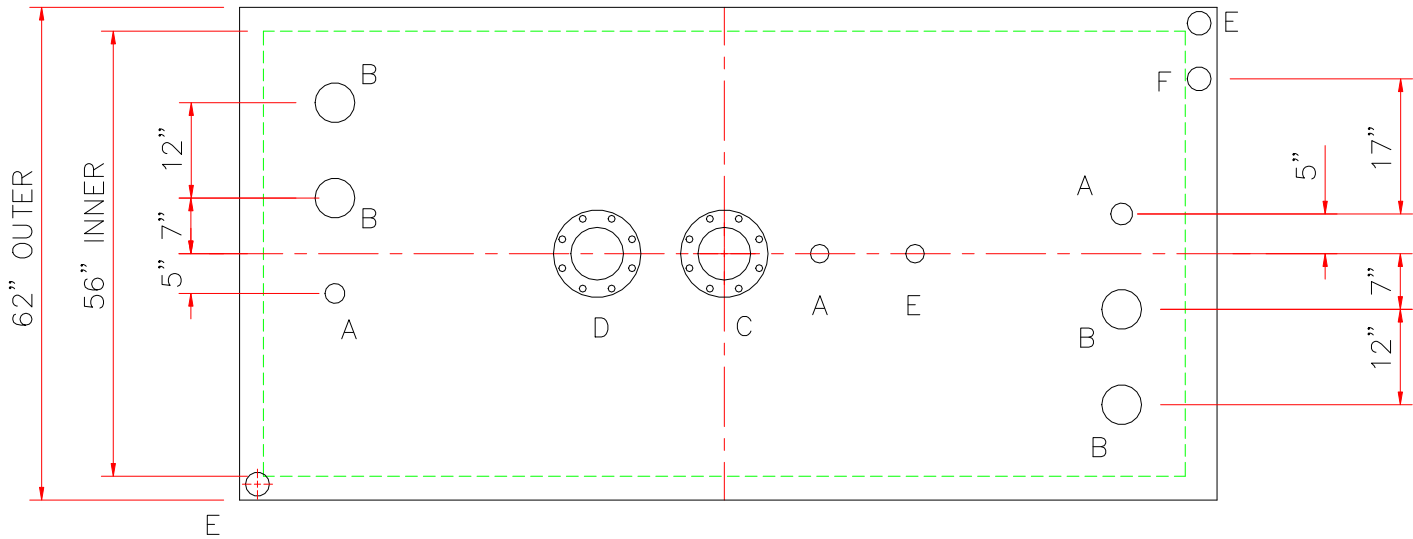


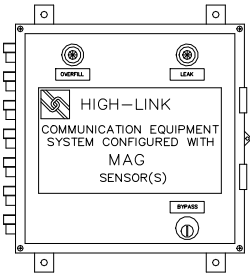
SHIP LOOSE: (INSTALLATION ON SITE BY OTHERS)
(2) 6" FLANGED EMERGENCY VENT
(1) HIGH-LINK LEVEL SHIELD MODEL# LS_XEXD_1500 59"
LONG & BUSHING WITH LS_LINK_GPRS COMMUNICATION BOX.

TOUCH UP OF FINISHED PAINT IS
REQUIRED BY INSTALLATION
CONTRACTOR. TOUCH UP PAINT SHIPPED
WITH TANK.

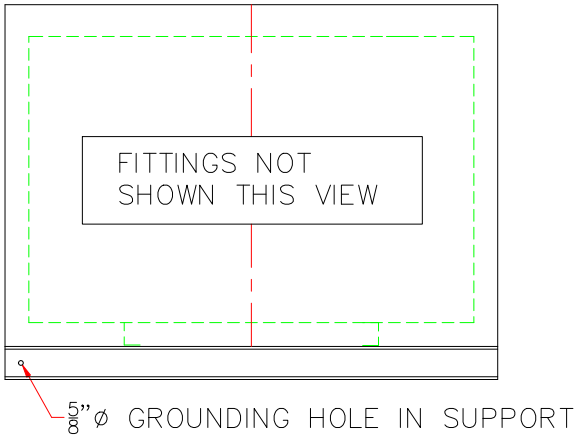
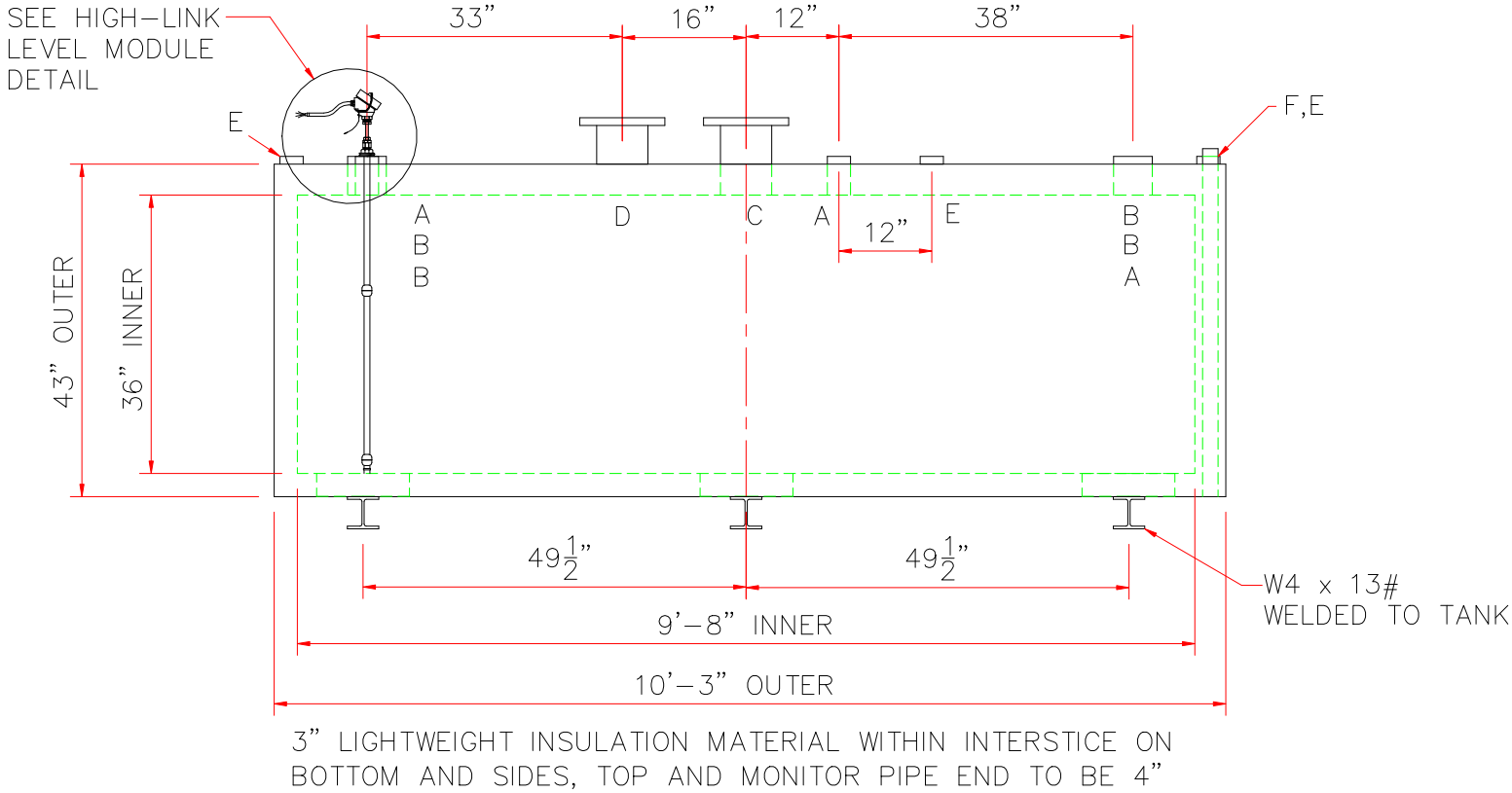
NOTE: ALL RIGHTS RESERVED. THIS
DRAWING MUST NOT BE REPRODUCED IN
ANY FORM WITHOUT THE WRITTEN
PERMISSION OF HIGHLAND TANK®.
HIGHLAND TANK® SHALL BE RESPONSIBLE
ONLY FOR ITEMS INDICATED ON THIS
FABRICATION DRAWING UNLESS OTHERWISE
NOTED. CUSTOMER IS RESPONSIBLE FOR
VERIFYING CORRECTNESS OF SIZE AND
LOCATION OF FITTINGS, ACCESSORIES, AND
COATINGS SHOWN ON THIS DRAWING.



HIGH-LINK LEVEL
SHIELD DETAIL



COMMUNICATION
BOX DETAIL



DESIGN DATA	
CAPACITY :	1,000 GALLONS
TYPE:	FIREGUARD® RECTANGULAR
FIREGUARD® IS A TRADEMARK OF THE STEEL TANK INSTITUTE	
NO. REQ.	—
OPERATING PRESSURE	— ATMOSPHERIC
SPECIFIC GRAVITY	= 1.0
TANK MATERIAL	— MILD CARBON STEEL
THICKNESS — INNER	— 7 GAUGE
THICKNESS — OUTER	— 7 GAUGE
MIN. GAUGE OR THICKNESS (PER U.L. 2085)	
CONSTRUCTION — INNER	— LAP WELD OUTSIDE ONLY
CONSTRUCTION — OUTER	— LAP WELD OUTSIDE ONLY
TANK TEST — INNER	— 1.5 TO 3 PSIG
TANK TEST — OUTER	— 1.5 TO 3 PSIG
INT. FINISH	— NONE
EXT. FINISH	— SP-6 BLAST, FINISH PAINT WHITE
LABEL— UL 2085 AND FIREGUARD® PER sti	

LEGEND	
A	2" FEMALE FIREGUARD COUPLING
B	4" FEMALE FIREGUARD COUPLING
C	6" FFSO 150# FLANGE — PRIMARY EMERGENCY VENT
D	6" FFSO 150# FLANGE THROUGH OUTER SHELL ONLY, MARK WITH SPECIAL WARNING LABEL INTERSTITIAL EMERGENCY VENT USE ONLY
E	2" FITTING THROUGH OUTER SHELL ONLY WITH CAST IRON PLUG — FOR MFG USE ONLY
F	2" INTERSTITIAL MONITOR PIPE — MALE NPT END

NOTES:
STRIKER PLATES ARE NOT SUPPLIED ON
FIREGUARDS® UNLESS SPECIFIED

Highland Tank

UNLESS NOTED, TOLERANCES ARE +/- 1"

1,000 GAL REC. FIREGUARD®

PATENT: 5,695,089 PATENT: 5,809,650

CUSTOMER:

PROJECT:

QUOTE NO:

CHK'D BY:

SCALE: 1/2" = 12"

DATE:

DWG. BY:

DWG. NO.: 01000FGREC