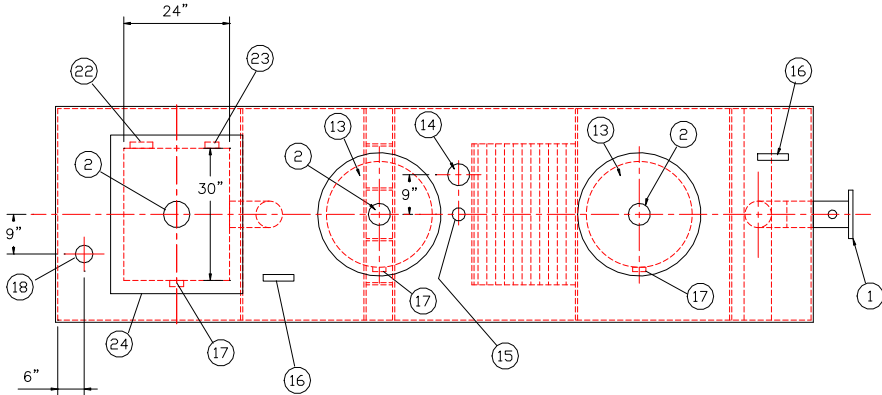


GENERAL SPECIFICATIONS		
NO. REQ'D: (1)		
CAPACITY: 1000 GALLONS		
TYPE: HTC-J, HIGHGUARD, DW TYPE I 360		
MATERIAL: MILD CARBON STEEL		
FLOW RATE: 100 GPM		
GAUGE: BASED ON 60" MAX BURIAL		
	INNER	OUTER
SHELL-	7 GA.	10 GA.
HEADS-	7 GA.	10 GA.
SURFACE PREP:		
SSPC NO.6 BLAST ALL EXTERIOR SURFACES		
SSPC NO.10 BLAST ALL INTERIOR OF WATER CHAMBER ONLY		
COATING:	MATERIAL	THICKNESS
EXTERIOR-	HIGHGUARD	(75 MILS)
INTERIOR-	POLYURETHANE	(15 MILS)
	INTERIOR OF WATER CHAMBER	
CONSTRUCTION :		
LAP FIT & WELD ALL EXTERIOR SEAMS		
OPERATING PRESSURE : ATMOSPHERIC		

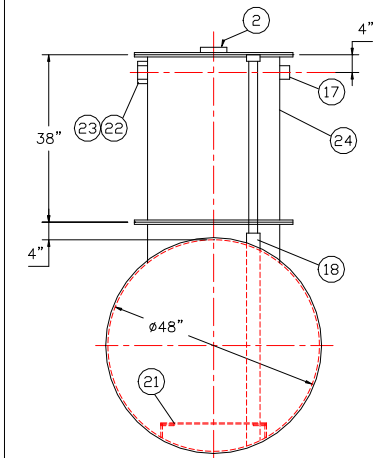


PLAN

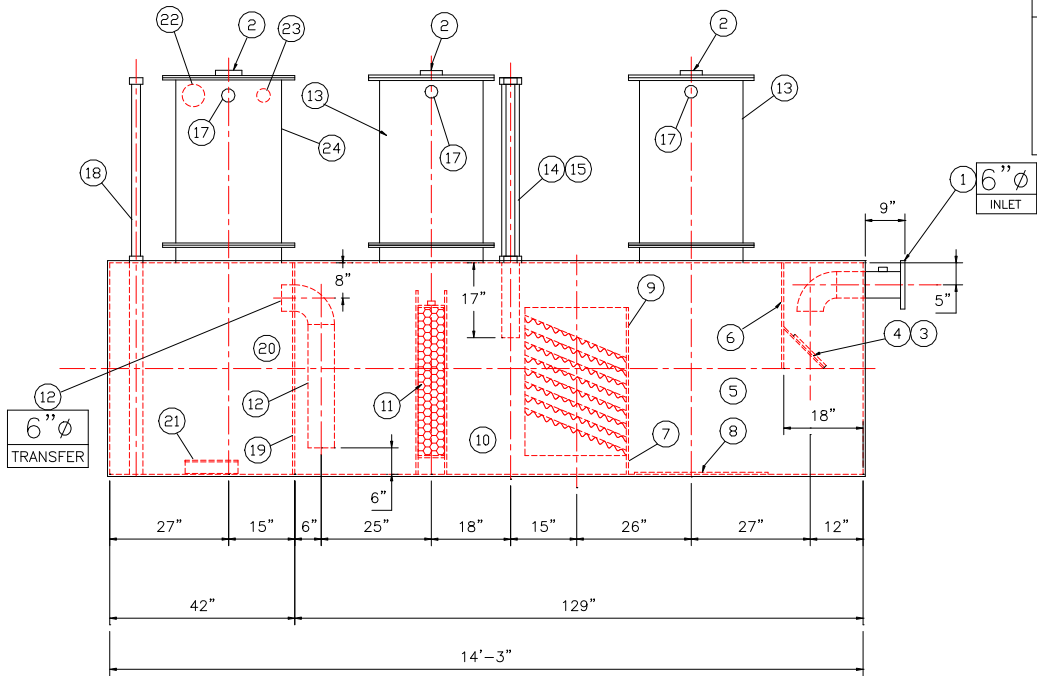
PROVIDED EQUIPMENT	
1.	150# R.F.S.O. FLANGE W/ 2" FNPT FOR VENT
2.	4"Ø FNPT FOR GAUGE WITH PLUG
3.	VELOCITY HEAD DIFFUSION BAFFLE
4.	WEAR PLATE
5.	SEDIMENT CHAMBER
6.	UNDERFLOW BAFFLE (REMOVABLE)
7.	SLUDGE BAFFLE
8.	STRIKER PLATES
9.	PARALLEL CORRUGATED PLATE COALESCER. CORELLA PVC PLATES (3" PLATE SPACING)
10.	OIL/WATER SEPARATOR CHAMBER
11.	6" THICK PETROSREEN COALESCER MATERIAL INSTALLED W/ PULL ROD SHIPPED LOOSE
12.	STEEL TRANSFER PIPE W/ DOWNCOMER
13.	24"Ø MANWAY WITH NEO-CORK GASKETS. BOLT-ON EXTENSION SHIPPED LOOSE
14.	4"Ø FNPT FOR OIL PUMP-OUT WITH INTERNAL PVC PIPE INSTALLED & RISER PIPE SHIPPED LOOSE
15.	2"Ø FNPT FOR LEVEL SENSOR WITH RISER PIPE SHIPPED LOOSE
16.	LIFTING LUG
17.	2"Ø FNPT FOR VENT
18.	2"Ø FNPT FOR LEAK SENSOR WITH RISER PIPE SHIPPED LOOSE
19.	7 GA. BULKHEAD
20.	EFFLUENT WATER CHAMBER
21.	PUMP MOUNT
22.	4" FNPT FOR EFFLUENT PUMP CONDUIT AND WIRING
23.	2" FNPT FOR EFFLUENT LEVEL SENSOR CONDUIT AND WIRING
24.	RECTANGULAR MANWAY WITH CLOSED CELL SPONGE GASKET. BOLT-ON EXTENSION SHIPPED LOOSE

ANCILLARY PROVIDED EQUIPMENT	
(4)	24" NEO-CORK MANWAY GASKETS
(4)	SETS OF NUTS/BOLTS/WASHERS FOR 24" MANWAY
(1)	24"x30" CLOSED CELL FOAM MANWAY GASKET
(1)	24"x30" RUBBER RIBBON MANWAY GASKET
(2)	SETS OF NUTS/BOLTS/WASHERS FOR 24"x30" MANWAY

NOTES	
1.	POLYURETHANE HIGHGUARD TANK IS NOT APPROVED FOR THE STORAGE OF HEATED PRODUCTS
2.	ALL VENT PIPING BY INSTALLER
3.	15000 VOLT SPARK TEST PROVIDED AT FACTORY
4.	CUSTOMER TO PROVIDE EFFLUENT PUMPING INFORMATION FOR PROPER PUMP SIZING & PUMPOUT DESIGN



END VIEW




ELEVATION

NOTE :
ALL RIGHTS RESERVED. THIS DRAWING OR ANY PART THEREOF MUST NOT BE REPRODUCED IN ANY FORM WITHOUT THE WRITTEN PERMISSION OF HIGHLAND TANK.
HIGHLAND TANK SHALL BE RESPONSIBLE ONLY FOR ITEMS INDICATED ON THIS FABRICATION DRAWING UNLESS OTHERWISE NOTED. CUSTOMER IS RESPONSIBLE FOR VERIFYING CORRECTNESS OF SIZE / LOCATION OF FITTINGS , ACCESSORIES & COATINGS SHOWN ON THIS DRAWING

UNLESS OTHERWISE SPECIFIED DIMENSIONS ARE IN INCHES
TOLERANCES ARE + OR - 1"

SCALE: 3/8"=1'-0" DATE: DWG. BY: DWG. NO.: 01000HGDWHTCJ

REVISIONS	
 Highland Tank U.S. Patent #4,722,800 Canadian Patent # 1,296,263	
1000 GALLON OIL WATER SEPARATOR HTC-J, HIGHGUARD, DW TYPE I 360	
CUSTOMER:	
PROJECT:	
QUOTE NO:	CHK'D BY:

GENERAL SPECIFICATIONS

NO. REQ'D: (1)

CAPACITY: 1000 GALLONS

TYPE: HTC-J, HIGHGUARD, DW TYPE I 360

MATERIAL: MILD CARBON STEEL

FLOW RATE: 100 GPM

GAUGE: BASED ON 60" MAX BURIAL

	INNER	OUTER
SHELL-	7 GA.	10 GA.
HEADS-	7 GA.	10 GA.

SURFACE PREP:

SSPC NO.6 BLAST ALL EXTERIOR SURFACES

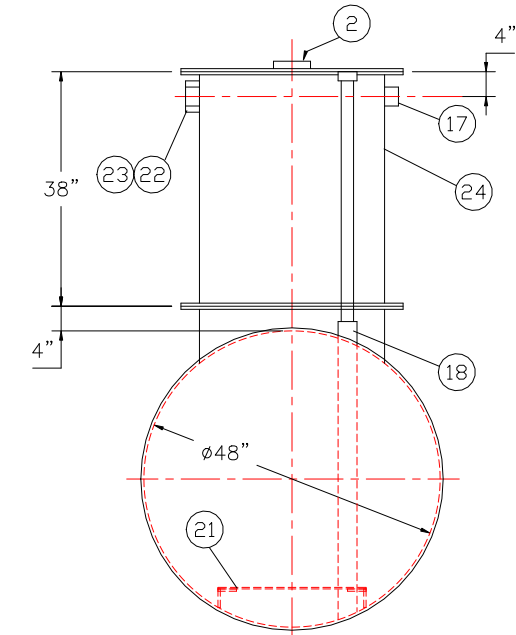
SSPC NO.10 BLAST ALL INTERIOR OF WATER CHAMBER ONLY

COATING:	MATERIAL	THICKNESS
EXTERIOR-	HIGHGUARD	(75 MILS)
INTERIOR-	POLYURETHANE	(15 MILS)
	INTERIOR OF WATER CHAMBER	

CONSTRUCTION :

LAP FIT & WELD ALL EXTERIOR SEAMS

OPERATING PRESSURE : ATMOSPHERIC

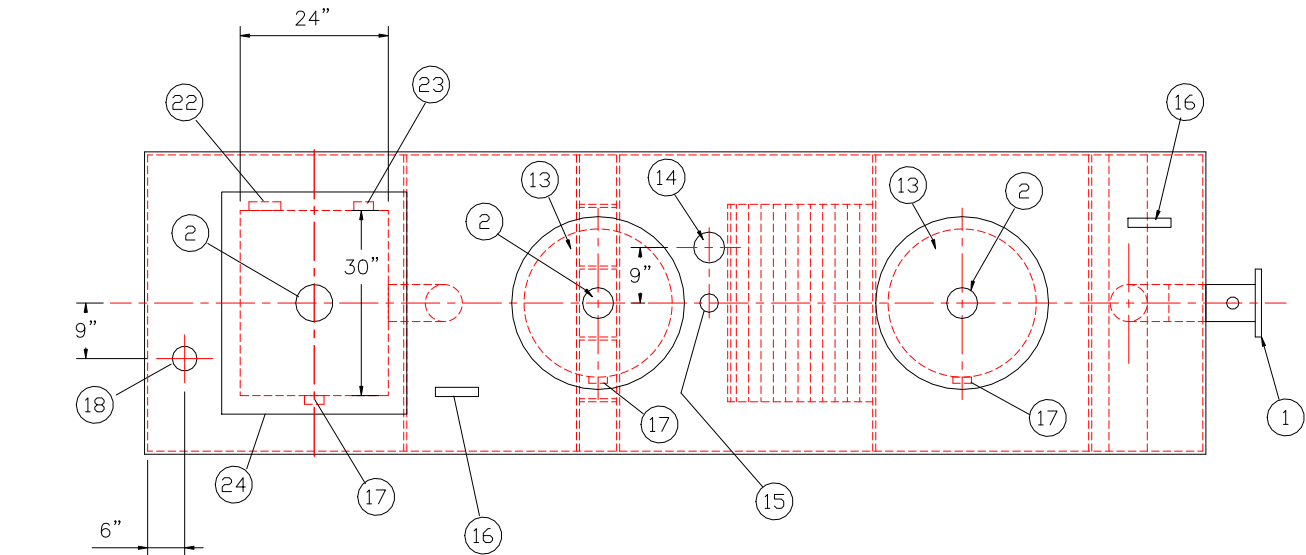


END VIEW

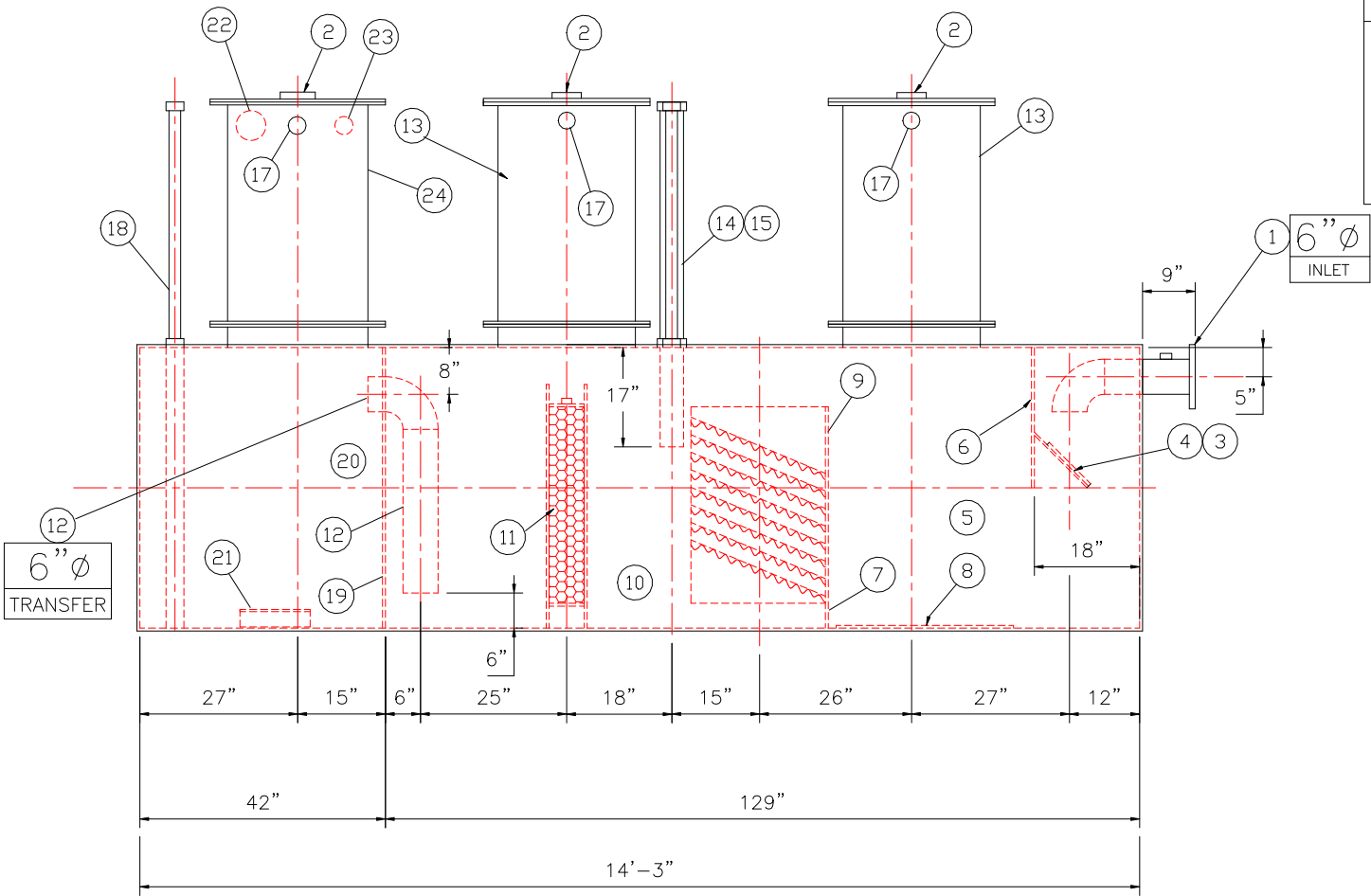
NOTE :

ALL RIGHTS RESERVED. THIS DRAWING OR ANY PART THEREOF MUST NOT BE REPRODUCED IN ANY FORM WITHOUT THE WRITTEN PERMISSION OF HIGHLAND TANK.

HIGHLAND TANK SHALL BE RESPONSIBLE ONLY FOR ITEMS INDICATED ON THIS FABRICATION DRAWING UNLESS OTHERWISE NOTED. CUSTOMER IS RESPONSIBLE FOR VERIFYING CORRECTNESS OF SIZE / LOCATION OF FITTINGS , ACCESSORIES & COATINGS SHOWN ON THIS DRAWING



PLAN



ELEVATION

PROVIDED EQUIPMENT

1. 150# R.F.S.O. FLANGE W/ 2" FNPT FOR VENT
2. 4"Ø FNPT FOR GAUGE WITH PLUG
3. VELOCITY HEAD DIFFUSION BAFFLE
4. WEAR PLATE
5. SEDIMENT CHAMBER
6. UNDERFLOW BAFFLE (REMOVABLE)
7. SLUDGE BAFFLE
8. STRIKER PLATES
9. PARALLEL CORRUGATED PLATE COALESCER. CORELLA PVC PLATES (3" PLATE SPACING)
10. OIL/WATER SEPARATOR CHAMBER
11. 6" THICK PETROSCREEN COALESCER MATERIAL INSTALLED W/ PULL ROD SHIPPED LOOSE
12. STEEL TRANSFER PIPE W/ DOWNCOMER
13. 24"Ø MANWAY WITH NEO-CORK GASKETS. BOLT-ON EXTENSION SHIPPED LOOSE
14. 4"Ø FNPT FOR OIL PUMP-OUT WITH INTERNAL PVC PIPE INSTALLED & RISER PIPE SHIPPED LOOSE
15. 2"Ø FNPT FOR LEVEL SENSOR WITH RISER PIPE SHIPPED LOOSE
16. LIFTING LUG
17. 2"Ø FNPT FOR VENT
18. 2"Ø FNPT FOR LEAK SENSOR WITH RISER PIPE SHIPPED LOOSE
19. 7 GA. BULKHEAD
20. EFFLUENT WATER CHAMBER
21. PUMP MOUNT
22. 4" FNPT FOR EFFLUENT PUMP CONDUIT AND WIRING
23. 2" FNPT FOR EFFLUENT LEVEL SENSOR CONDUIT AND WIRING
24. RECTANGULAR MANWAY WITH CLOSED CELL SPONGE GASKET. BOLT-ON EXTENSION SHIPPED LOOSE

ANCILLARY PROVIDED EQUIPMENT

- (4) 24" NEO-CORK MANWAY GASKETS
- (4) SETS OF NUTS/BOLTS/WASHERS FOR 24" MANWAY
- (1) 24"x30" CLOSED CELL FOAM MANWAY GASKET
- (1) 24"x30" RUBBER RIBBON MANWAY GASKET
- (2) SETS OF NUTS/BOLTS/WASHERS FOR 24"x30" MANWAY

NOTES

1. POLYURETHANE HIGHGUARD TANK IS NOT APPROVED FOR THE STORAGE OF HEATED PRODUCTS
2. ALL VENT PIPING BY INSTALLER
3. 15000 VOLT SPARK TEST PROVIDED AT FACTORY
4. CUSTOMER TO PROVIDE EFFLUENT PUMPING INFORMATION FOR PROPER PUMP SIZING & PUMPOUT DESIGN

REVISIONS



Highland Tank

U.S. Patent #4,722,800 Canadian Patent # 1,296,263

1000 GALLON OIL WATER SEPARATOR
HTC-J, HIGHGUARD, DW TYPE I 360

CUSTOMER:

PROJECT:

QUOTE NO:

CHK'D BY:

UNLESS OTHERWISE SPECIFIED DIMENSIONS ARE IN INCHES
TOLERANCES ARE + OR - 1"

SCALE:
3/8"=1'-0"

DATE:

DWG. BY:

DWG. NO.:

01000HGDWHTCJ