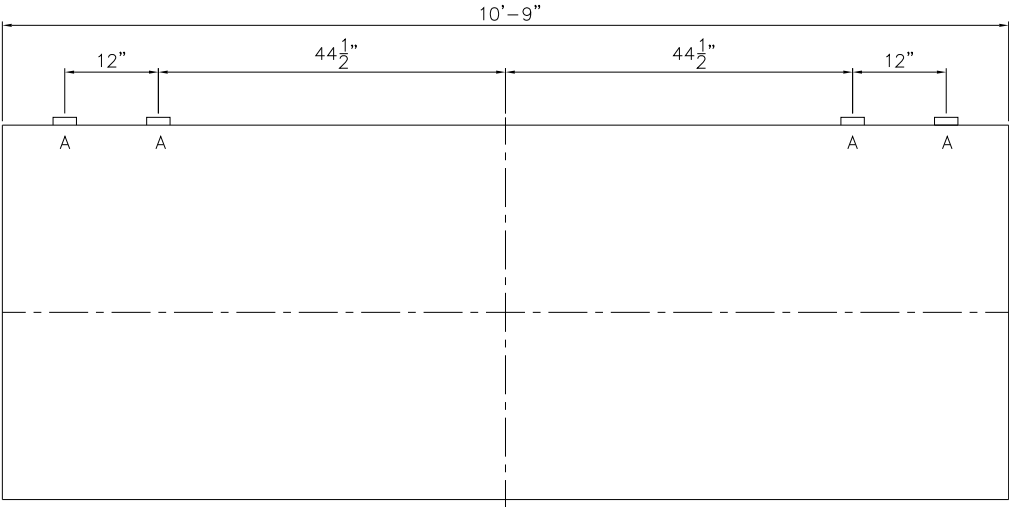
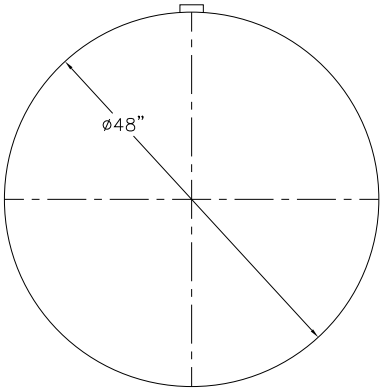


NOTE: ALL RIGHTS RESERVED. THIS DRAWING MUST NOT BE REPRODUCED IN ANY FORM WITHOUT THE WRITTEN PERMISSION OF HIGHLAND TANK®. HIGHLAND TANK® SHALL BE RESPONSIBLE ONLY FOR ITEMS INDICATED ON THIS FABRICATION DRAWING UNLESS OTHERWISE NOTED. CUSTOMER IS RESPONSIBLE FOR VERIFYING CORRECTNESS OF SIZE AND LOCATION OF FITTINGS, ACCESSORIES, AND COATINGS SHOWN ON THIS DRAWING.



DESIGN DATA
CAPACITY – 1,000 GALLONS
TYPE – SINGLE WALL
NO. REQ. – –
OPERATING PRESSURE – ATMOSPHERIC
TANK MATERIAL –MILD CARBON STEEL
THICKNESS – HEADS: 10 GA
THICKNESS – SHELL: 10 GA
CONSTRUCTION – LAP WELD OUTSIDE ONLY
TANK TEST –INNER – 5 PSIG
INT. FINISH – NONE
EXT. FINISH – SP6 BLAST, GREEN CHEMTHANE 2240
LABEL – UL 58

LEGEND	
A	2" FITTING
B	–
C	–
D	–
E	–
F	–

		<b>Highland Tank®</b>	
1,000 GAL 48"Ø SW HIGH-RES			
CUSTOMER:			
PROJECT:			
QUOTE NO:		CHK'D BY:	
SCALE: 3/4"=1'-0"	DATE:	DWG. BY:	DWG. NO: 01000HRSW48GA10

