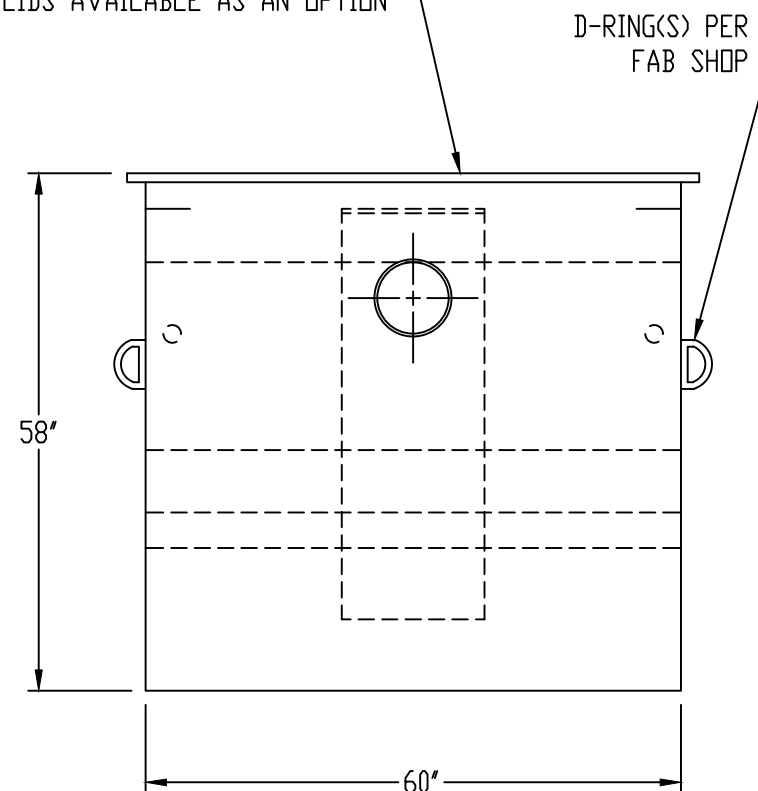


BOLT-ON DECKPLATE LIDS WITH RECESSED LIFTING RINGS - LIDS PAINTED BLACK
H-20 RATED LIDS AVAILABLE AS AN OPTION



GENERAL SPECIFICATIONS

QUANTITY: ONE (1)
MODEL: MGI-1000
STATIC WATER CAPACITY: 1,039 GAL
GREASE HOLDING CAPACITY: 2,000 LBS
MATERIAL: 7 GA CARBON STEEL
SINGLE-WALL CONSTRUCTION
SURFACE PREP: SSPC-SP 10 BLAST ALL SURFACES
INTERIOR AND EXTERIOR COATING: CHEMTHANE 2240 POLYURETHANE - 15 MILS DFT

NOTES:

STANDARD TANK MATERIAL IS COATED
CARBON STEEL - STAINLESS STEEL
CONSTRUCTION IS AVAILABLE.

DRAWING SHOWS STANDARD TANK HEIGHT.
CUSTOMER MUST SPECIFY ACTUAL
HEIGHT DIMENSION REQUIRED.

ALL PLUMBING CONNECTIONS MUST COMPLY
WITH LOCAL CODES AND REGULATIONS.

CUSTOMER APPROVAL

THE CUSTOMER HAS REVIEWED THIS
DRAWING AND VERIFIED THE ACCURACY OF
ALL INFORMATION AND DIMENSIONS.

SIGNED: _____

DATE: _____

NOTE:
ALL RIGHTS RESERVED. THIS DRAWING, OR ANY PART THEREOF, MUST NOT
BE REPRODUCED IN ANY FORM WITHOUT WRITTEN PERMISSION FROM
HIGHLAND TANK. UNLESS OTHERWISE NOTED, HIGHLAND TANK SHALL BE
RESPONSIBLE ONLY FOR ITEMS INDICATED ON THIS FABRICATION DRAWING.
THE CUSTOMER IS RESPONSIBLE FOR VERIFYING THE CORRECTNESS OF
THE TYPE, SIZE, AND LOCATION OF ALL FITTINGS, ACCESSORIES, AND
COATINGS SHOWN ON THIS DRAWING.

THIS DRAWING IS SUBJECT TO CHANGE AT THE DISCRETION OF
THE MANUFACTURER. CONTACT HIGHLAND TANK FOR THE MOST
UP-TO-DATE INFORMATION AND DRAWINGS OF OUR PRODUCTS.



MANUAL GREASE INTERCEPTOR
MGI-1000

CUSTOMER: _____

PROJECT: _____

QUOTE NO.: _____

ORDER: _____

SCALE: DATE: DWG. BY: DWG. NO:
NTS 2/12/18 MGS MGI-1000

DIMENSION TOLERANCE: $\pm 1"$