

GENERAL SPECIFICATIONS

NO. REQ'D: (1)

CAPACITY: 1000 GALLONS

TYPE: RECTANGULAR, HTC, ABOVEGROUND, SINGLE WALL

MATERIAL: MILD CARBON STEEL

FLOW RATE: 100 GPM

GAUGE:

SHELL- 7 GA

HEADS- 7 GA

SURFACE PREP:

SSPC NO.10 BLAST ALL INTERIOR SURFACES

SSPC NO.6 BLAST ALL EXTERIOR SURFACES

COATING:

MATERIAL

THICKNESS

EXTERIOR-

CHEMPRIME 3001

(3-6 MILS)

CHEMLINE 3300

(2-3 MILS)

TOP COAT "WHITE"

INTERIOR-

CHEMLINE 4200 PW

(15 MILS)

CONSTRUCTION:

BUTT FIT & WELD ALL CORNERS IN & OUT

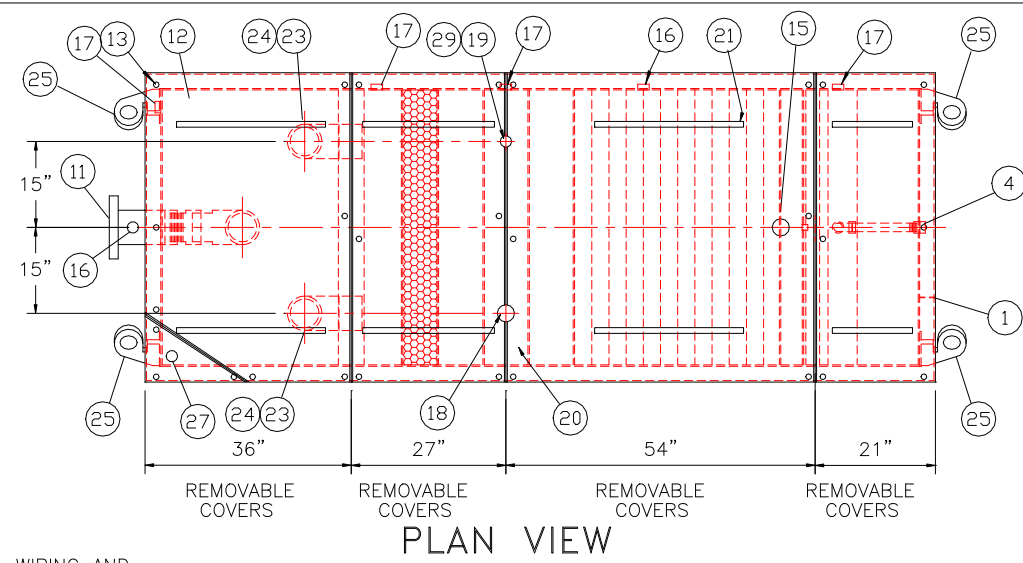
NOTES

1. ALL INTERNAL MATERIAL IS 10 GA

2. ALL THREADED DRAIN FITTINGS TO HAVE STEEL THREADED PLUGS AND COATED WITH TANK

3. ALL OTHER THREADED FITTINGS TO HAVE PVC THREADED PLUGS

4. LIFTING LUGS HAVE REINFORCING PLATES



REFERENCE DWG 01000DSBUMP FOR DEEP SUMP BASIN DETAILS

PROVIDED EQUIPMENT

1. 3"x3"x1/4" FLAT W/ 9/16"Ø HOLE DRILLED IN CENTER (GROUNDING LUG)

2. SEDIMENT CHAMBER

3. OIL WATER SEPARATOR CHAMBER

4. FNPT THREADED INLET

5. PVC INLET ELBOW PIPING

6. VELOCITY HEAD DIFFUSION BAFFLE - 10GA

7. WEAR PLATE - 1/4"

8. REMOVABLE PARALLEL CORRUGATED PLATE COALESCER (CORELLA PVC PLATES) 1" PLATE SPACING

9. SLUDGE BAFFLE - 10GA

10. PVC OUTLET DOWNCOMER PIPE

11. 150# RF50 FLANGED OUTLET

12. (4) PIECE COVER W/ 5/8" BOLT HOLES - 7 GA

13. NUTS & BOLTS W/ LARGE WING NUTS-TYP. (CORROSION RESISTANT)

14. GASKET MATERIAL (FOR EACH REMOVABLE COVER)

15. 3"Ø FNPT (CLEAN-OUT)

16. 2"Ø FNPT (VENT)

17. 2"Ø FNPT HALF COUPLING (DRAIN) W/ STEEL PLUG

18. 3"Ø FNPT FULL COUPLING W/ 3"Ø INTERNAL PVC PIPE (OIL PUMPOUT)

19. 2"Ø FNPT HALF COUPLING (INTERFACE LEVEL SENSOR)

20. 7GA. CROSSMEMBER 9" WIDE FOR OIL PUMP-OUT & LEVEL SENSOR FTG.

21. HANDLES PER H.T. STANDARD

22. 6" THICK REMOVABLE PETROSCREEN CARTRIDGE COALESCER

23. 6"Ø STEEL ELBOW W/ HALF COUPLING WELDED TO TOP FOR PVC RISER PIPES

24. 6"Ø ADJUSTABLE FERNCO COUPLING

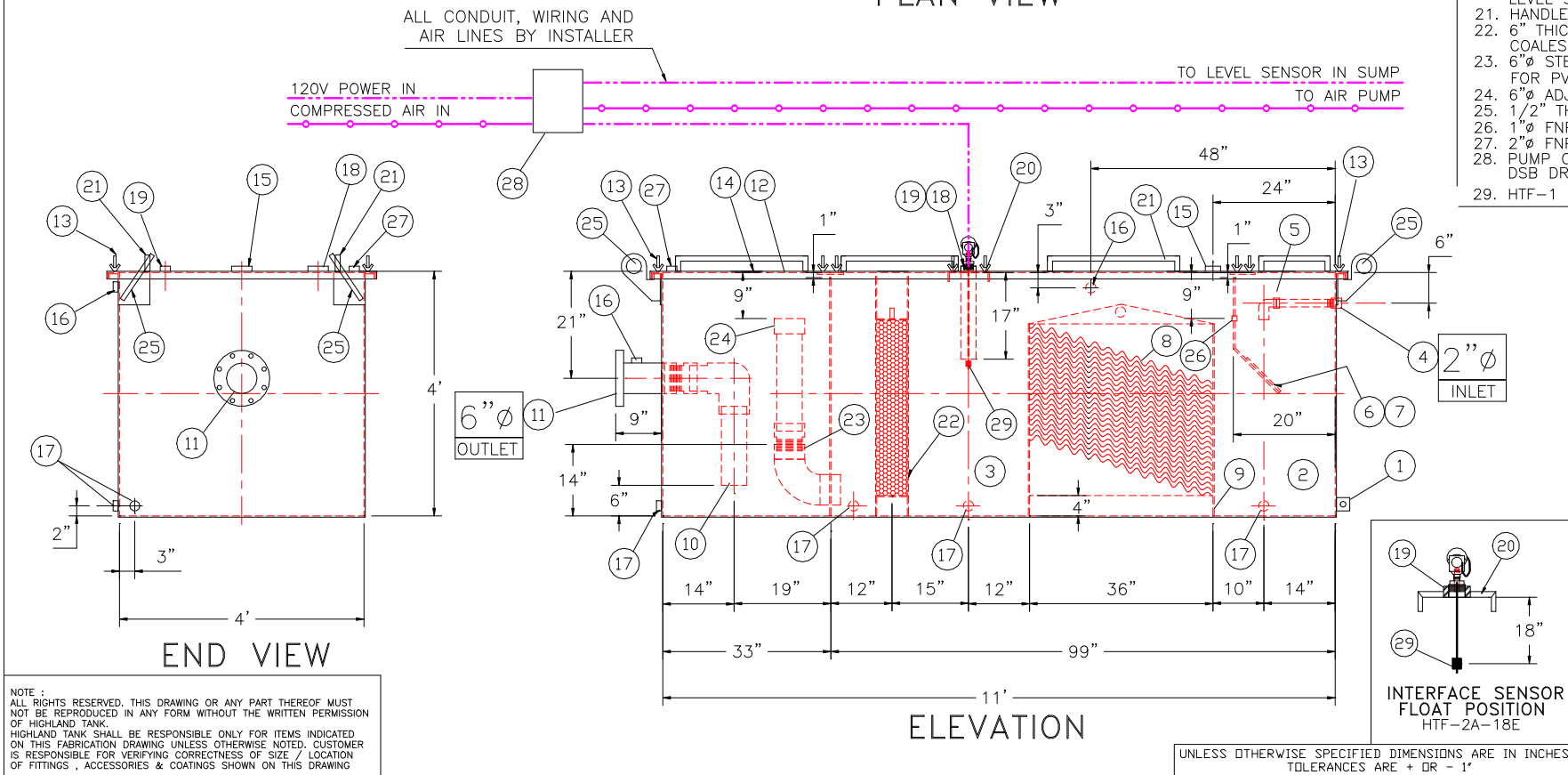
25. 1/2" THICK LIFTING LUG ANGLED TOWARD CENTER

26. 1" FNPT COUPLING W/ PLUG

27. 2"Ø FNPT HALF COUPLING (SPARE)

28. PUMP CONTROL AND ALARM PANEL 120V/60HZ/1PH. SEE DSB DRAWING FOR MODEL#

29. HTF-1 FLOAT INTERFACE SENSOR W/ NEMA 4 CAP



REVISIONS

Highland Tank

U.S. Patent #4,722,800 Canadian Patent # 1,296,263

1000 GALLON OIL WATER SEPARATOR
RECTANGULAR, HTC, SINGLE WALL

CUSTOMER:

PROJECT:

QUOTE NO:

CHK'D BY:

UNLESS OTHERWISE SPECIFIED DIMENSIONS ARE IN INCHES
TOLERANCES ARE + OR - 1"

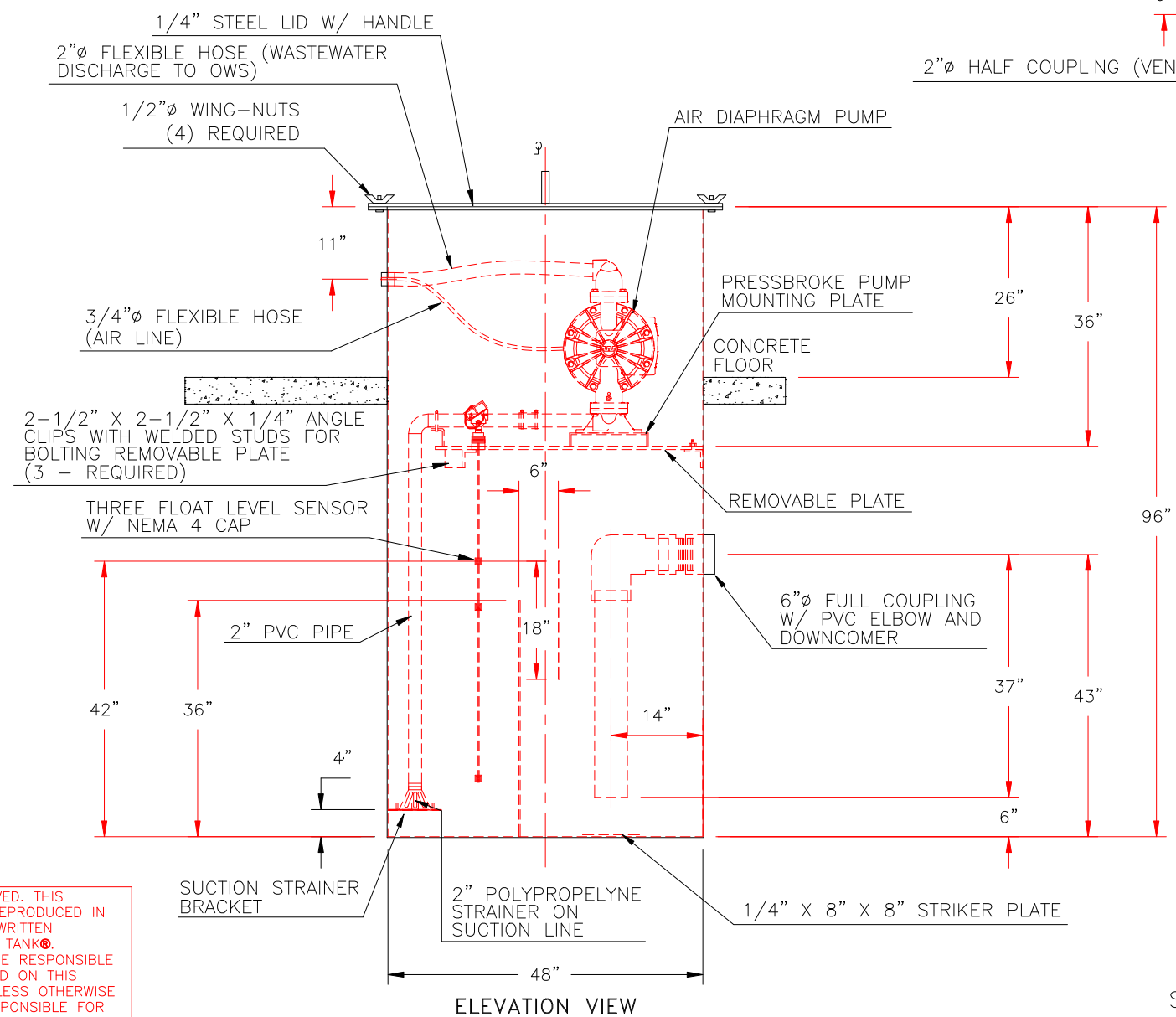
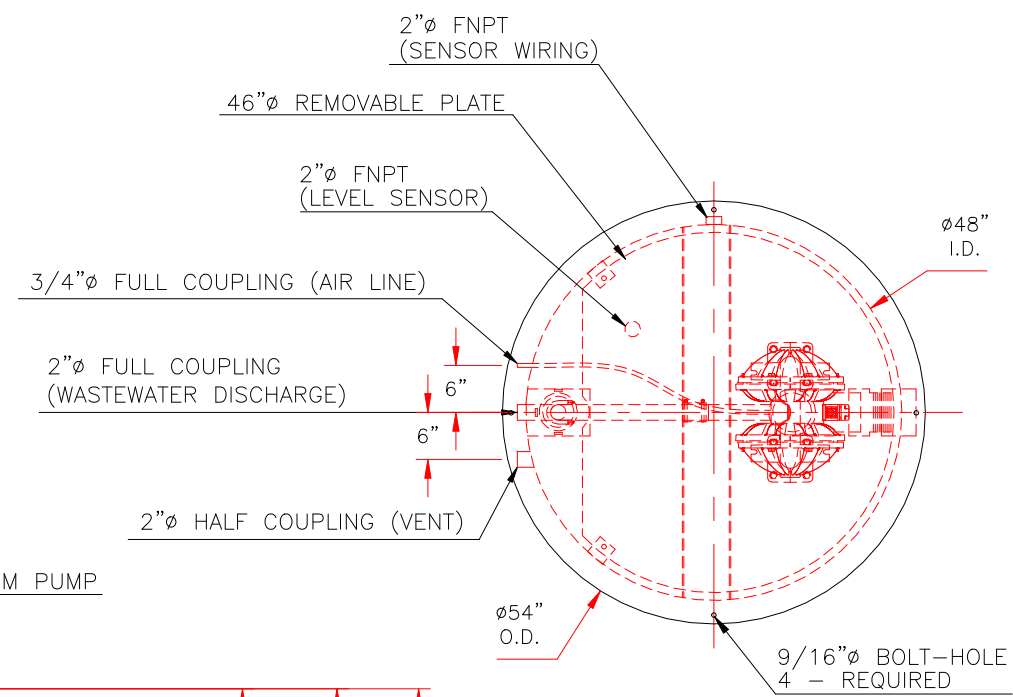
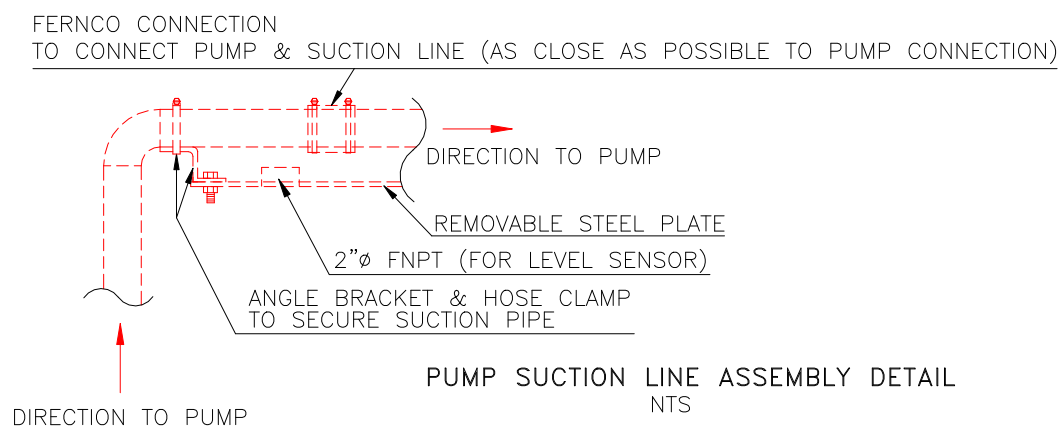
SCALE: 1/2"=1'-0"

DATE: 6-28-22

DWG. BY: REM

DWG. NO: 01000DSBOWS

WILDEN AIR DIAPHRAGM PUMP MODEL: XPS820/AAAAA/ZGS/BN/BN/0248
WITH INLET AND DISCHARGE FACING AIR INLET
THREE FLOAT LEVEL SENSOR MODEL: HTF-2C-50A-24A-17A
CONTROL PANEL MODEL: S-115PC-ALRM 2-3/4"



NOTE: ALL RIGHTS RESERVED. THIS
DRAWING MUST NOT BE REPRODUCED IN
ANY FORM WITHOUT THE WRITTEN
PERMISSION OF HIGHLAND TANK®.
HIGHLAND TANK® SHALL BE RESPONSIBLE
ONLY FOR ITEMS INDICATED ON THIS
FABRICATION DRAWING UNLESS OTHERWISE
NOTED. CUSTOMER IS RESPONSIBLE FOR
VERIFYING CORRECTNESS OF SIZE AND
LOCATION OF FITTINGS, ACCESSORIES, AND
COATINGS SHOWN ON THIS DRAWING.

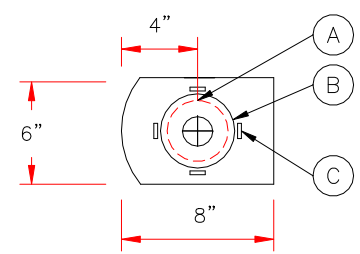
DRAWING 2 OF 2
GENERAL SPECIFICATIONS

CAPACITY: 752 GALLONS
MATERIAL: MILD CARBON STEEL
GAUGE OR THICKNESS:
SHELL- 7GA
BOTTOM- 7GA
BAFFLE- 7GA
SURFACE PREP:
SSPC NO. 10 BLAST ALL INTERIOR SURFACES
SSPC NO. 6 BLAST ALL EXTERIOR SURFACES
COATING:
INTERIOR: POLYURETHANE (15 MILS)
EXTERIOR: POLYURETHANE (15 MILS)
FLOW RATE - 100 GPM

NOTES

1. SLUDGE BAFFLE MADE FROM 7GA.
2. AIR PRESSURE TO PUMP TO BE ADJUSTED
TO ACHIEVE 100 GPM MAX FLOW RATE.

A= 4" DIA. THRU HOLE
B= 4 7/8" O.D. STRAINER
C= 1"x1" TABS ON 90° CENTERS
ON 5 1/4" I.D. CIRCLE



STRAINER BRACKET DETAIL
NTS



Highland Tank®

96" SUMP W/ INTERNAL PUMP®

CUSTOMER:			
PROJECT:			
QUOTE NO:			CHK'D BY:
SCALE: 1/2"=1'-0"	DATE: 6-28-22	DWG. BY: REM	DWG. NO: 01000DSBSUMP

SEE DWG: 01000DSBOWS FOR TANK DRAWING

UNLESS OTHERWISE SPECIFIED DIMENSIONS ARE IN INCHES
TOLERANCES ARE + OR - 1"