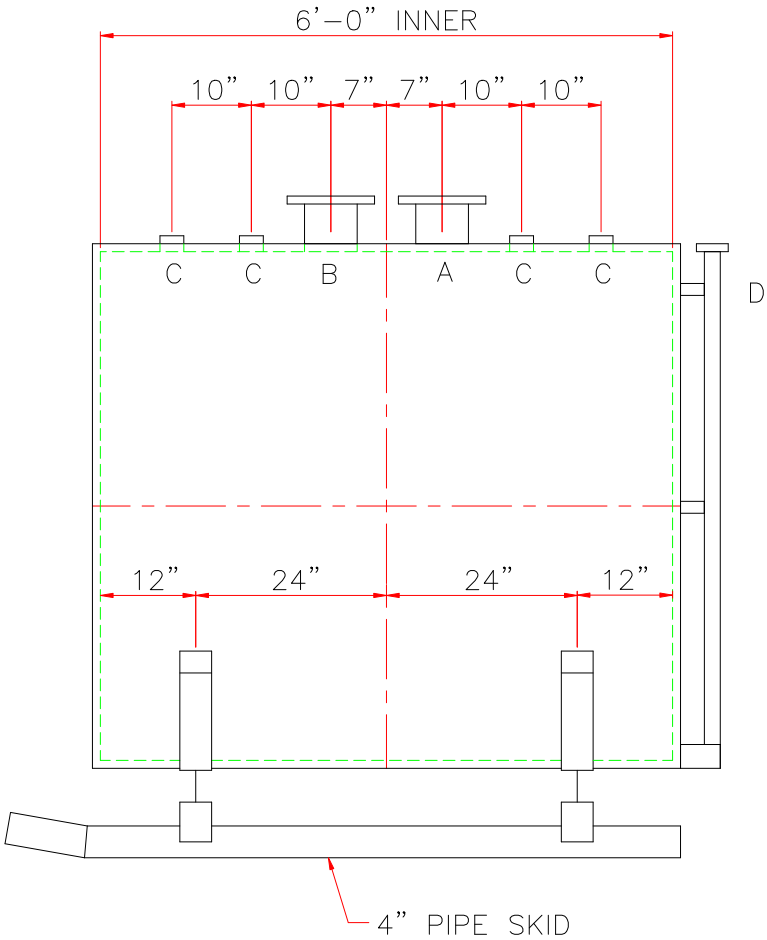
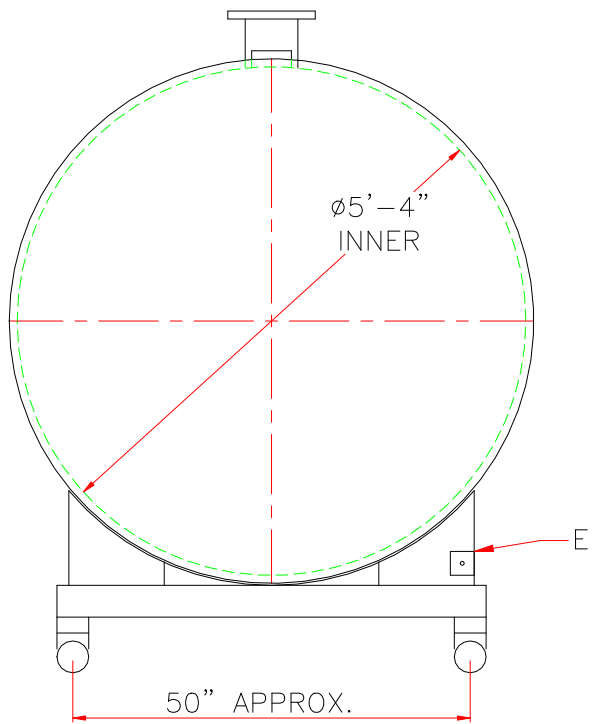


NOTE: ALL RIGHTS RESERVED. THIS DRAWING MUST NOT BE REPRODUCED IN ANY FORM WITHOUT THE WRITTEN PERMISSION OF HIGHLAND TANK®. HIGHLAND TANK® SHALL BE RESPONSIBLE ONLY FOR ITEMS INDICATED ON THIS FABRICATION DRAWING UNLESS OTHERWISE NOTED. CUSTOMER IS RESPONSIBLE FOR VERIFYING CORRECTNESS OF SIZE AND LOCATION OF FITTINGS, ACCESSORIES, AND COATINGS SHOWN ON THIS DRAWING.

TOUCH UP OF FINISHED PAINT IS REQUIRED BY INSTALLATION CONTRACTOR. TOUCH UP PAINT SHIPPED WITH TANK.



DESIGN DATA
CAPACITY – 1,000 GALLONS
TYPE – DOUBLE WALL – TYPE I 360°
NO. REQ. – –
OPERATING PRESSURE – ATMOSPHERIC
SPECIFIC GRAVITY = 1.0
TANK MATERIAL – MILD CARBON STEEL
THICKNESS – INNER– HEADS: 7 GA SHELL: 7 GA
THICKNESS – OUTER– HEADS: 10 GA SHELL:10 GA
CONSTRUCTION – INNER – LAP WELD OUTSIDE ONLY
OUTER – LAP WELD OUTSIDE ONLY
TANK TEST – INNER – 5 PSIG
OUTER – +3 PSIG OR 13”hg VACUUM
INT. FINISH – NONE
EXT. FINISH – SHOP PRIMER
–
LABEL – UL 142

LEGEND	
A	6” FFSO 150# FLANGE THROUGH OUTER SHELL ONLY, MARK WITH SPECIAL WARNING LABEL INTERSTITIAL EMERGENCY VENT USE ONLY
B	6” FFSO 150# FLANGE – PRIMARY EMERGENCY VENT USE
C	2” FITTING
D	2” INTERSTITIAL MONITOR PIPE
E	3” x 3” PLATE W/ 1/2”ø (MIN.) HOLE ON CENTER (GROUNDING LUG – ONE REQ'D)
F	–

THIS TANK CANNOT HAVE A LIGHT DUTY SKID

△

–

HIGHLAND
TANK
MFG. CO.

Highland Tank

UNLESS NOTED, TOLERANCES ARE +/- 1"

1,000 GAL 64”ø DW SKID TANK

CUSTOMER:

PROJECT:

QUOTE NO:

CHK'D BY:

SCALE:
1/2" = 12"

DATE:

DWG. BY:

DWG. NO:
01000SKDW64