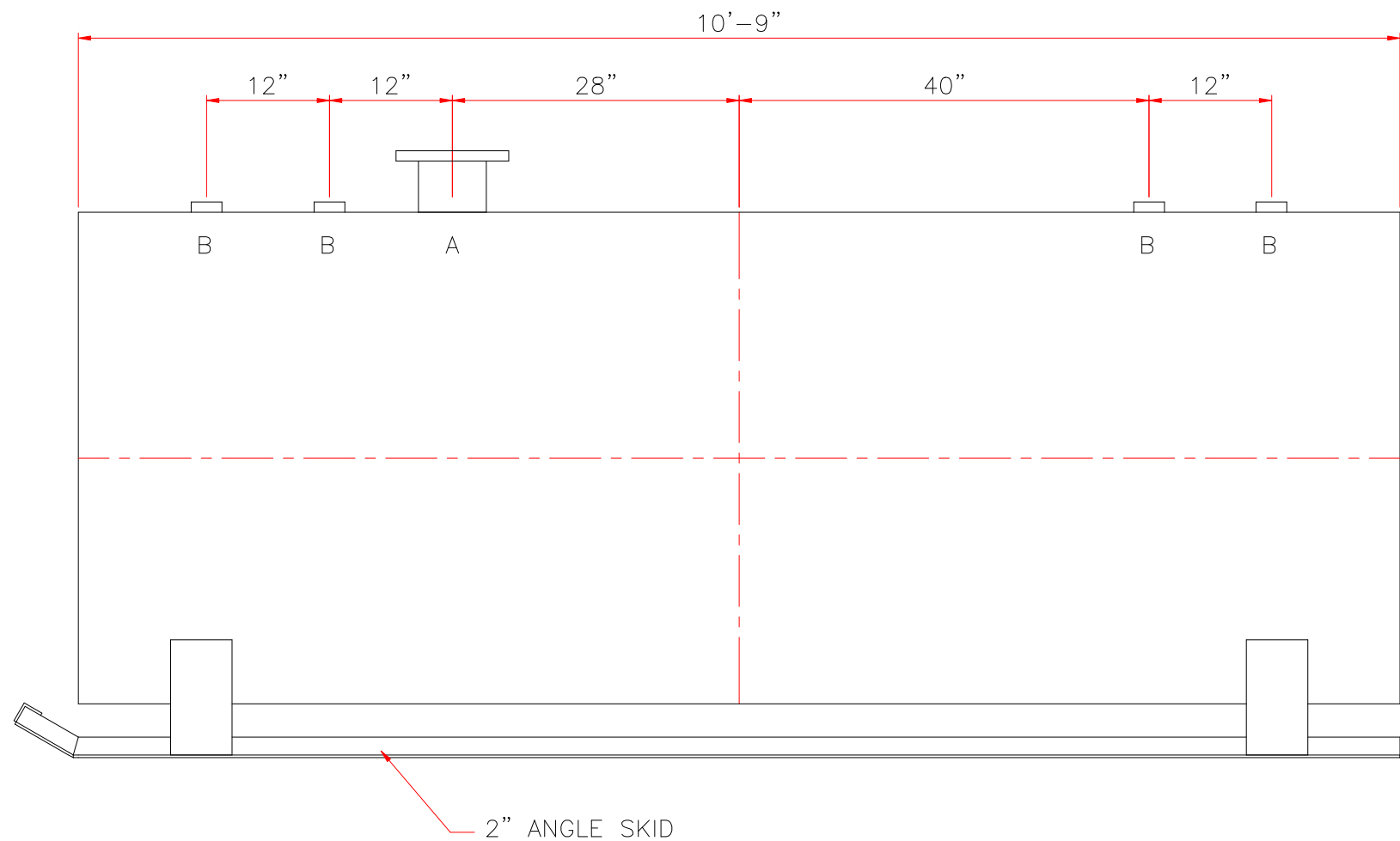


TOUCH UP OF FINISHED PAINT IS
REQUIRED BY INSTALLATION
CONTRACTOR. TOUCH UP PAINT SHIPPED
WITH TANK.



<u>LEGEND</u>	
A	6" FFSO 150# FLANGE – PRIMARY EMERGENCY VENT USE
B	2" FITTING
C	3" x 3" PLATE w/ 1/2"Ø (MIN.) HOLE ON CENTER (GROUNDING LUG–ONE REQ'D)

		<h1>Highland Tank</h1>	
UNLESS NOTED, TOLERANCES ARE $\pm 1"$			
1,000 GAL 48" \emptyset SW SKID TANK			
CUSTOMER:			
PROJECT:			
QUOTE NO:		CHK'D BY:	
SCALE: 3/4" = 12"	DATE:	DWG. BY:	DWG. NO: 01000SKSW4810GA