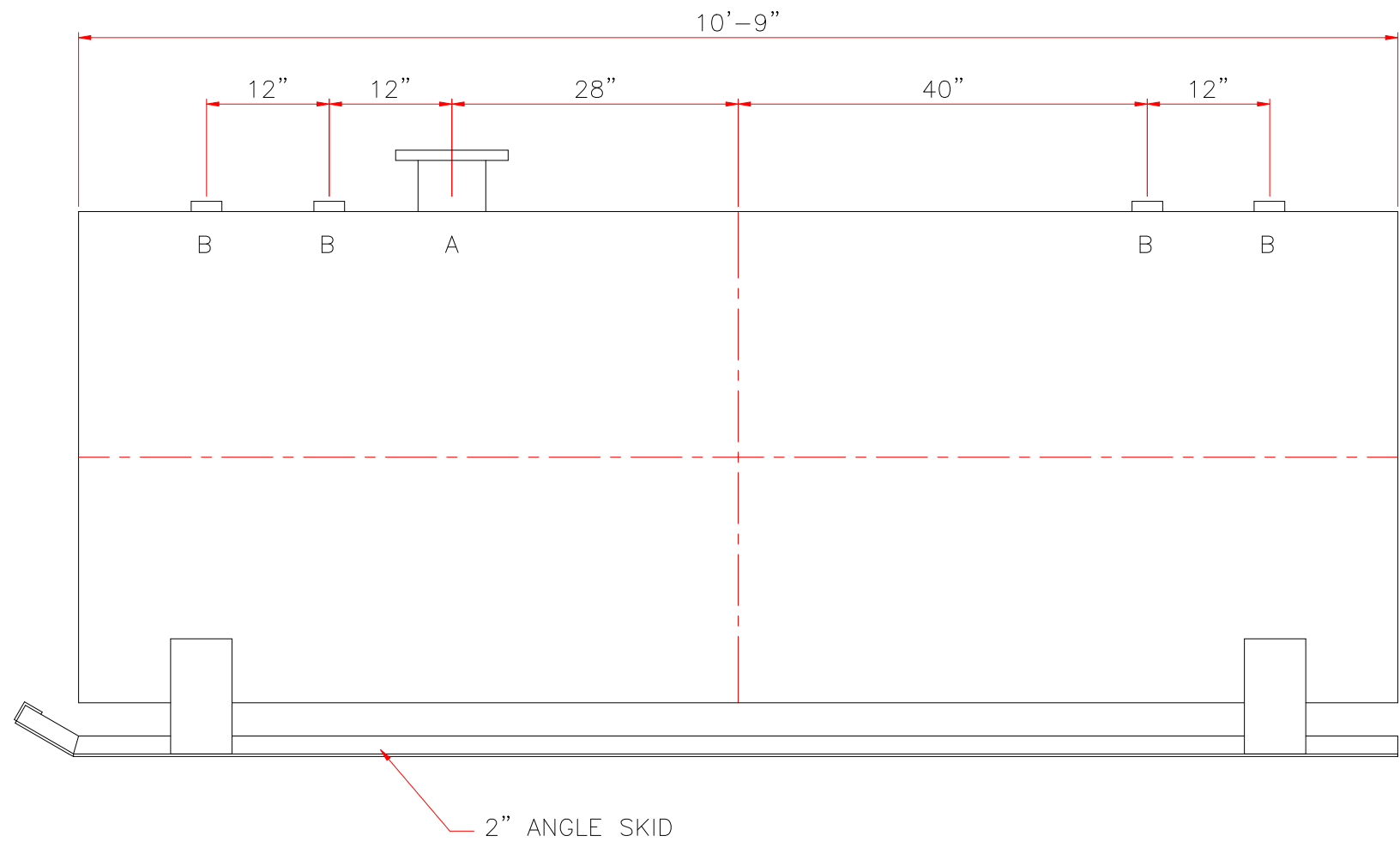
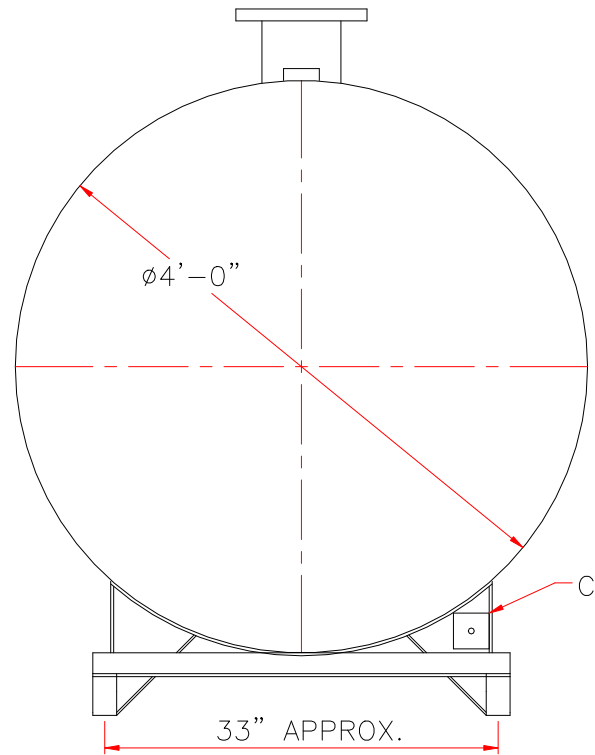


TOUCH UP OF FINISHED PAINT IS
REQUIRED BY INSTALLATION
CONTRACTOR. TOUCH UP PAINT SHIPPED
WITH TANK.



<u>DESIGN DATA</u>	
CAPACITY	— 1,000 GALLONS
TYPE	— SINGLE WALL
NO. REQ.	— —
OPERATING PRESSURE	— ATMOSPHERIC
SPECIFIC GRAVITY	= 1.0
TANK MATERIAL	— MILD CARBON STEEL
THICKNESS — HEADS:	7 GAUGE
THICKNESS — SHELL:	7 GAUGE
CONSTRUCTION	— LAP WELD OUTSIDE ONLY
TANK TEST	— 5 PSIG
INT. FINISH	— NONE
EXT. FINISH	— SHOP PRIMER
LABEL	— UL 142

<u>LEGEND</u>	
A	6" FFSO 150# FLANGE – PRIMARY EMERGENCY VENT USE
B	2" FITTING
C	3" x 3" PLATE w/ 1/2"Ø (MIN.) HOLE ON CENTER (GROUNDING LUG—ONE REQ'D)

		Highland Tank	
UNLESS NOTED, TOLERANCES ARE +/- 1"			
1,000 GAL 48"Ø SW SKID TANK			
CUSTOMER:			
PROJECT:			
QUOTE NO:		CHK'D BY:	
SCALE: 3/4" = 12"	DATE:	DWG. BY:	DWG. NO: 01000SKSW487GA