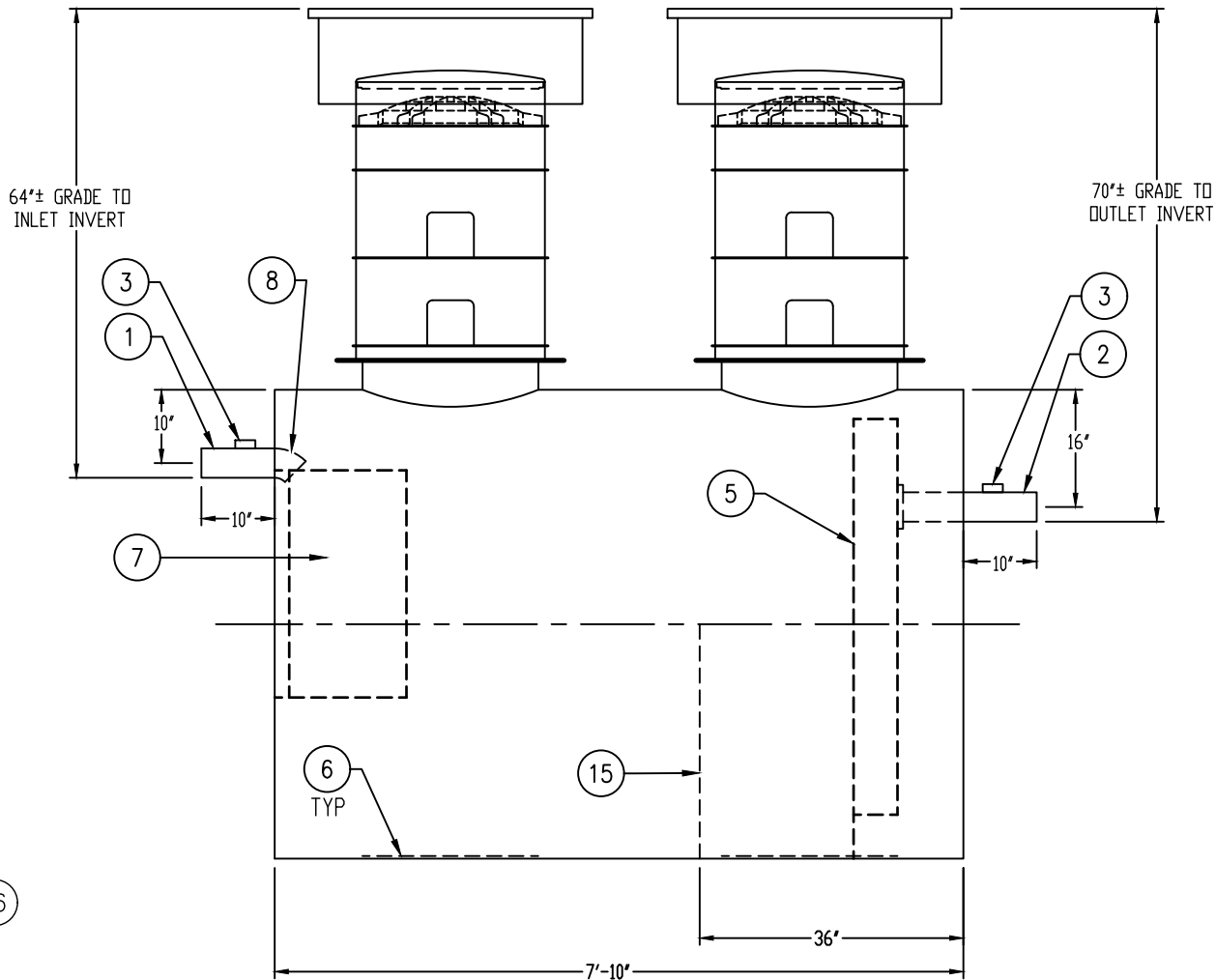
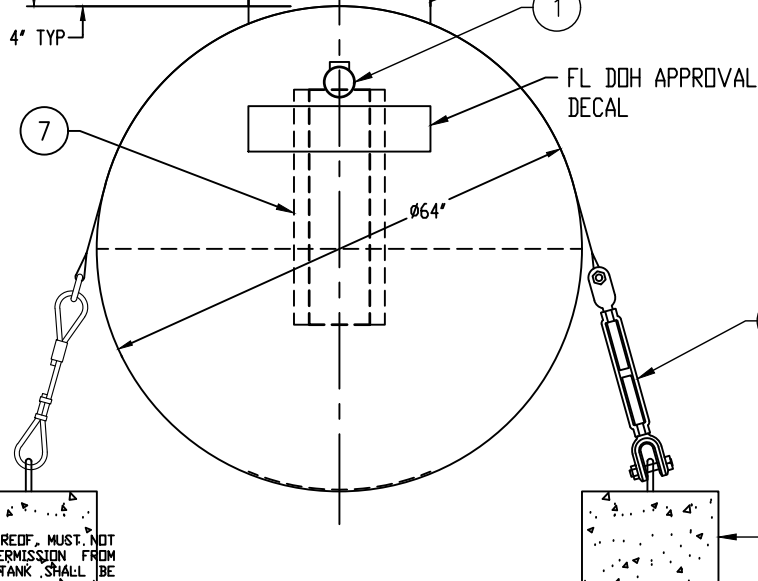
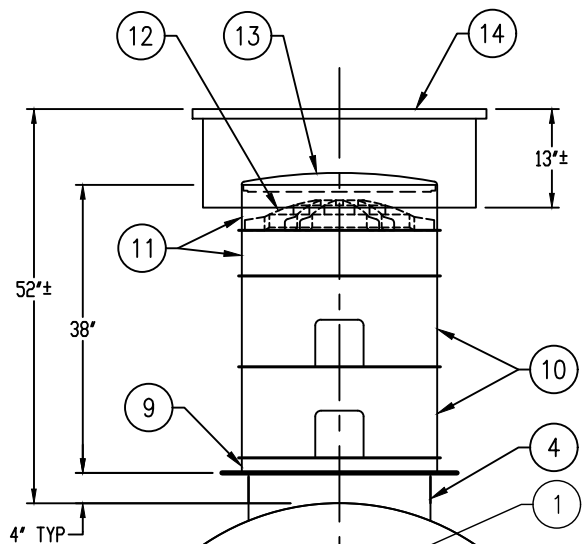


APPROXIMATE LOCATIONS SHOWN FOR
DEADMEN & HOLD-DOWN STRAPS
ACTUAL LOCATIONS TO BE DETERMINED
AT TIME OF INSTALLATION



GENERAL SPECIFICATIONS

QUANTITY: ONE (1)
MODEL: PGI-1000 FL
TOTAL CAPACITY: 1,309 GALLONS
EFFECTIVE CAPACITY: 1,007 GALLONS
FREEBOARD VOLUME: 302 GALLONS
TYPE: SINGLE WALL, HIGHGUARD, UNDERGROUND
MATERIAL: 7 GA CARBON STEEL
MATERIAL BASED ON 120" MAXIMUM BURIAL DEPTH
LAP FIT AND WELD INTERIOR AND EXTERIOR SEAMS
TANK TEST: 3-5 PSI AIR TEST
SURFACE PREP: SSPC-SP 10 BLAST INTERIOR SURFACES
SSPC-SP 6 BLAST EXTERIOR SURFACES
EXT. COATING: HIGHGUARD POLYURETHANE - 75 MILS
INT. COATING: CHEMTHANE 4200 PW (15 MILS DFT)
OPERATING PRESSURE: ATMOSPHERIC

NOTE: OPTIONAL 2" VENTS ON MANWAY RISERS AT THE
DISCRETION OF THE OWNER

PROVIDED EQUIPMENT

1. 4"Ø SCH 40 PIPE STUB - INLET
2. 4"Ø SCH 40 PIPE STUB - OUTLET
3. 2" HC - VENT
4. 24"Ø MANWAY FOR STACKABLE RISER
5. STEEL OUTLET DOWNCOMER BAFFLE WITH OPEN TOP
6. STRIKER PLATE
7. BOLT-ON INLET DIFFUSION BAFFLE - 7 GA
8. 4"Ø 45° DIFFUSION ELBOW
9. STACKABLE RISER ADAPTER RING & GASKET
10. (2) 24"Ø x 12" STACKABLE RISER - ALL STACKABLE
RISER COMPONENTS ARE PRE-ASSEMBLED AND
COMPLETE MANWAY RISER IS SHIPPED LOOSE
11. (2) 24"Ø x 6" STACKABLE RISER
12. STACKABLE RISER SAFETY SCREEN
13. 24"Ø PVC COVER
14. 36"Ø GRADE-LEVEL MANWAY - SHIPPED LOOSE
15. SLUDGE BAFFLE - 7 GA
16. (2) CDA-15 CONCRETE DEADMAN
17. (2) POLYESTER HOLD-DOWN STRAPS

NOTE: CONCRETE DEADMEN AND HOLD-DOWN STRAPS ARE NOT
REQUIRED FOR INSTALLATION OF GREASE INTERCEPTOR. THE
NEED FOR HOLD-DOWN APPARATUS WILL BE DETERMINED BY
THE ENGINEER OF RECORD OR PROJECT OWNER.

THIS DRAWING IS SUBJECT TO CHANGE AT THE DISCRETION
OF THE MANUFACTURER. CONTACT HIGHLAND TANK FOR
THE MOST UP-TO-DATE INFORMATION AND DRAWINGS OF
OUR PRODUCTS.



Highland Tank®

PASSIVE GREASE INTERCEPTOR

FLORIDA DEPARTMENT OF HEALTH
APPROVAL NUMBER
70-151-01302-C4
EFFECTIVE CAPACITY
1,000 GALLONS

CUSTOMER:

PROJECT:

QUOTE NO.:

SCALE: DATE: DWG. BY: DWG. NO.:
NTS 2/22/21 MGS PGI-1000 FL

DIMENSION TOLERANCE: ± 1"

NOTE:
ALL RIGHTS RESERVED. THIS DRAWING, OR ANY PART THEREOF, MUST NOT
BE REPRODUCED IN ANY FORM WITHOUT WRITTEN PERMISSION FROM
HIGHLAND TANK. UNLESS OTHERWISE NOTED, HIGHLAND TANK SHALL BE
RESPONSIBLE ONLY FOR ITEMS INDICATED ON THIS FABRICATION DRAWING.
THE CUSTOMER IS RESPONSIBLE FOR VERIFYING THE CORRECTNESS OF
THE TYPE, SIZE, AND LOCATION OF ALL FITTINGS, ACCESSORIES, AND
COATINGS SHOWN ON THIS DRAWING.