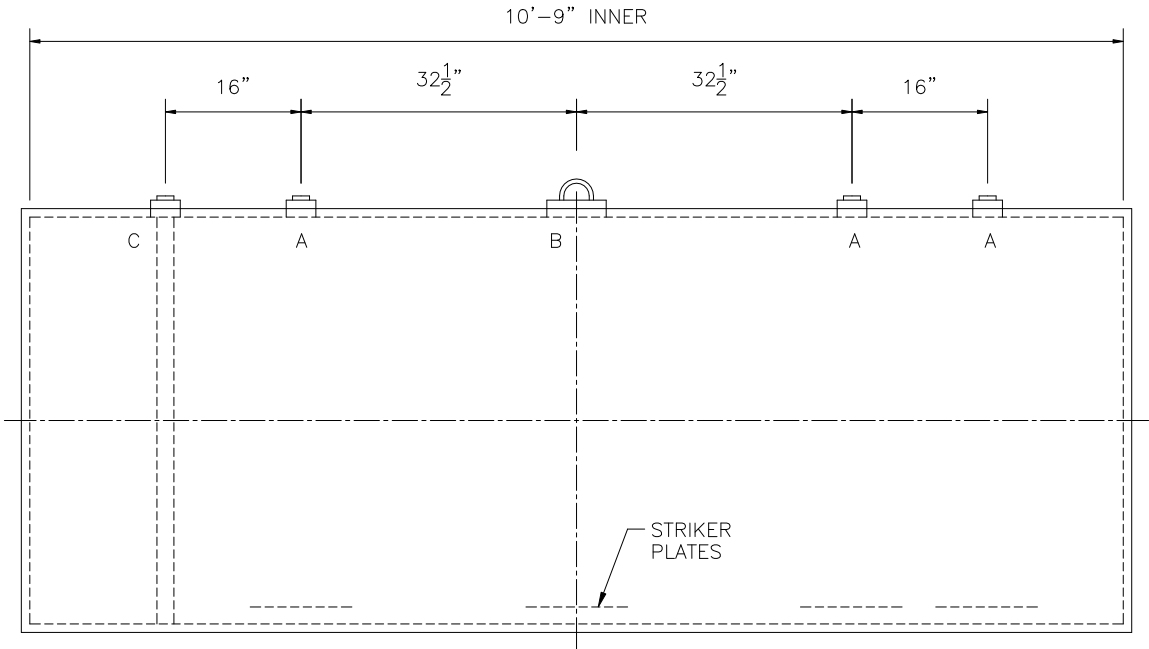
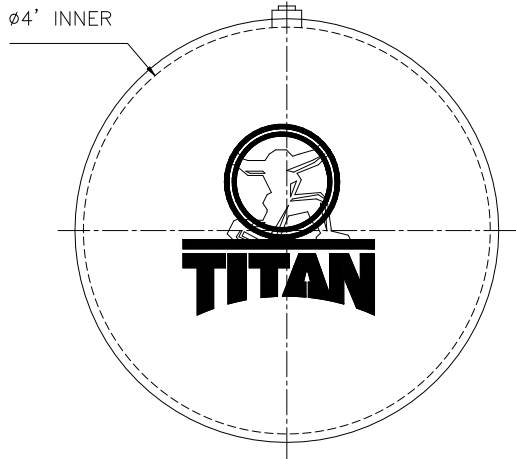



NOTE: ALL RIGHTS RESERVED. THIS DRAWING MUST NOT BE REPRODUCED IN ANY FORM WITHOUT THE WRITTEN PERMISSION OF HIGHLAND TANK®. HIGHLAND TANK® SHALL BE RESPONSIBLE ONLY FOR ITEMS INDICATED ON THIS FABRICATION DRAWING UNLESS OTHERWISE NOTED. CUSTOMER IS RESPONSIBLE FOR VERIFYING CORRECTNESS OF SIZE AND LOCATION OF FITTINGS, ACCESSORIES, AND COATINGS SHOWN ON THIS DRAWING.



STRIKER PLATES ROLLED & SEAL WELDED TO THE TANK, 1/4" X 12" X 12" MIN.

DESIGN DATA
CAPACITY – 1000 GALLON
TYPE – DOUBLE WALL – 360° TYPE II
NO. REQ. – –
OPERATING PRESSURE – ATMOSPHERIC
TANK MATERIAL – MILD CARBON STEEL
THICKNESS – HEADS: 10 GA
THICKNESS – SHELL: 10 GA
*GA THK. BASED ON 60" MAX. BURIAL DEPTH
CONSTRUCTION – LAP WELD OUTSIDE ONLY
–
TANK TEST – INNER: 5 PSIG
OUTER: FULL VACUUM
INT. FINISH – NONE
–
EXT. FINISH – GREEN TITAN® WRAP
–
LABEL – UL-58/UL-1746 PART III

LEGEND	
A	2" CLOSE OFF FITTING
B	4" CLOSE OFF FITTING WITH REMOVABLE LIFT LUG
C	2" CLOSE OFF FITTING WITH INTERNAL INTERSTITIAL MONITOR PIPE
D	–
E	–
F	–



**Highland Tank**

UNLESS NOTED, TOLERANCES ARE +/- 1"

1000 GALLON 48"Ø TITAN®

PATENT: 5,915,586 PATENT: 6,022,435 PATENT: 6,062,977  
PATENT: 6,119,887

CUSTOMER:

PROJECT:

QUOTE NO:

CHK'D BY:

SCALE: 3/4"=1'-0" DATE:

DWG. BY:

DWG. NO: 01000TITAN4810GA