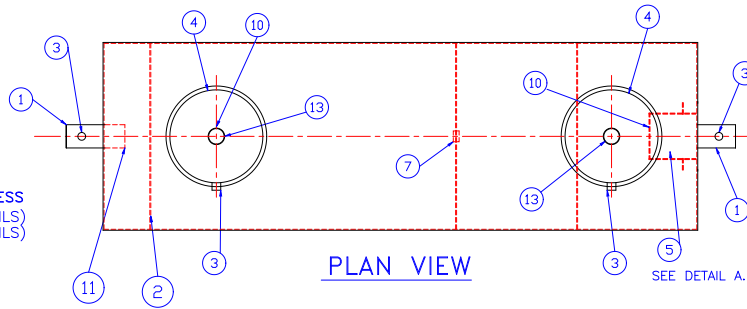


GENERAL SPECIFICATIONS

NO. REQ'D: (1)
 CAPACITY: 1,200 GALLONS
 TYPE: UNDERGROUND, SINGLE WALL, HIGHGUARD
 DOUBLE BASIN PASSIVE GREASE INTERCEPTOR,
 MATERIAL: MILD CARBON STEEL
 GAUGE:
 SHELL- 7GA
 HEADS- 7GA
 SURFACE PREP:
 SSPC NO.6 BLAST ALL EXTERIOR SURFACES
 COATING:
 EXTERIOR- POLYURETHANE
 INTERIOR- POLYURETHANE
 OPERATING PRESSURE- ATMOSPHERIC

THICKNESS
 (75 MILS)
 (15 MILS)



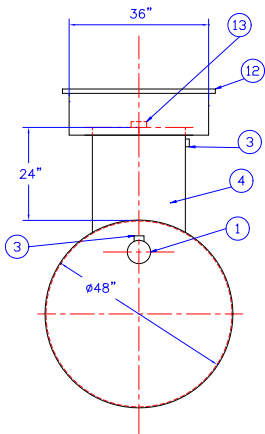
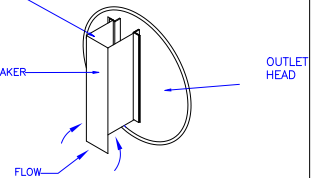
PLAN VIEW

PROVIDED EQUIPMENT

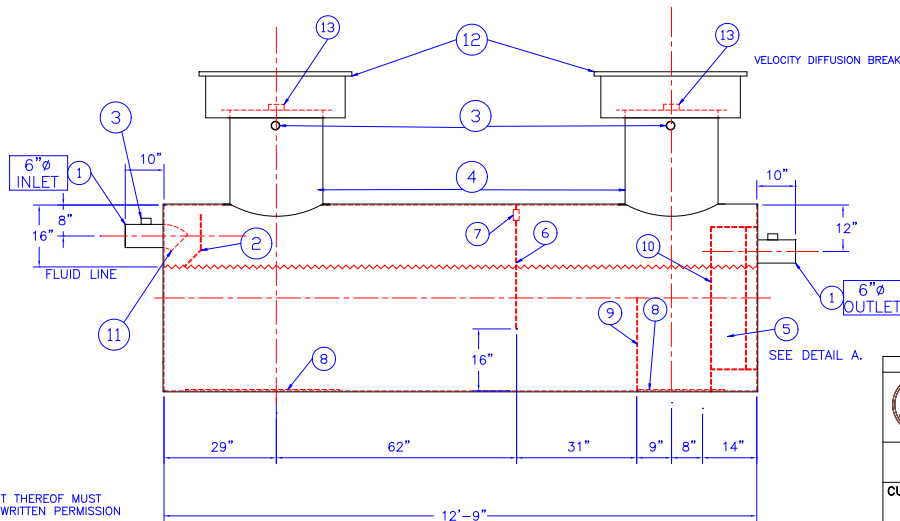
1. 6"Ø PIPE STUB 6" LONG W/ 2"Ø NPT FOR VENT
2. INLET DIFFUSION BAFFLE W/ WEARPLATE
3. 2" NPT FITTING FOR VENT
4. 24" O.D. MANWAY RISER
5. STEEL OUTLET DOWNCOMER BAFFLE
6. GREASE DAM (7GA)
7. 2" OPENING FOR VENT.
8. 1/4" STRIKER PLATES
9. SLUDGE BAFFLE (7 GA.)
10. VELOCITY DIFFUSION BREAKER
11. 6"Ø 45° DIFFUSION ELBOW
12. 36"Ø H-20 RATED GRADE MANWAY (SHIPPED LOOSE)
13. 4" NPT GAUGE FITTING

DETAIL A.

OPEN TOP FOR
 EFFLUENT TESTING.




END VIEW



ELEVATION

NOTE :
 ALL RIGHTS RESERVED. THIS DRAWING OR ANY PART THEREOF MUST
 NOT BE REPRODUCED IN ANY FORM WITHOUT THE WRITTEN PERMISSION
 OF HIGHLAND TANK.
 HIGHLAND TANK SHALL BE RESPONSIBLE ONLY FOR ITEMS INDICATED
 ON THIS FABRICATION DRAWING UNLESS OTHERWISE NOTED. CUSTOMER
 IS RESPONSIBLE FOR VERIFYING CORRECTNESS OF SIZE / LOCATION
 OF FITTINGS , ACCESSORIES & COATINGS SHOWN ON THIS DRAWING
 (1)-9M (1)-10Z

REVISIONS

	LOWE ENGINEERING CO. A HIGHLAND TANK COMPANY		
	1,200 GALLON DOUBLE BASIN PASSIVE GREASE INTERCEPTOR		
	CUSTOMER:		
	PROJECT:		
QUOTE NO:			
SCALE:	DATE:	DWG. BY:	DWG. NO.:
1/2"=1'-0"	01-31-06	CLO	012000BSWPG148