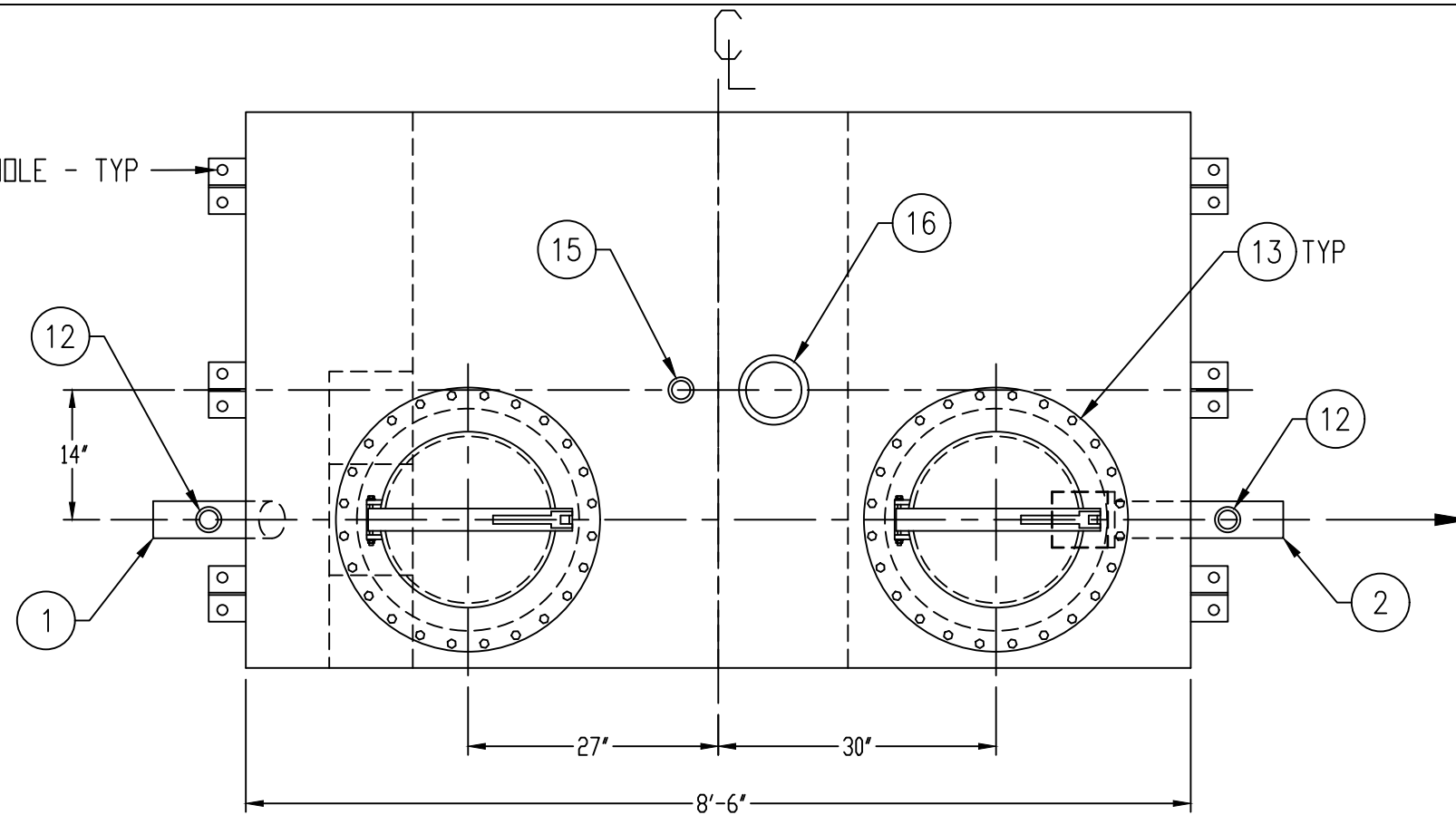
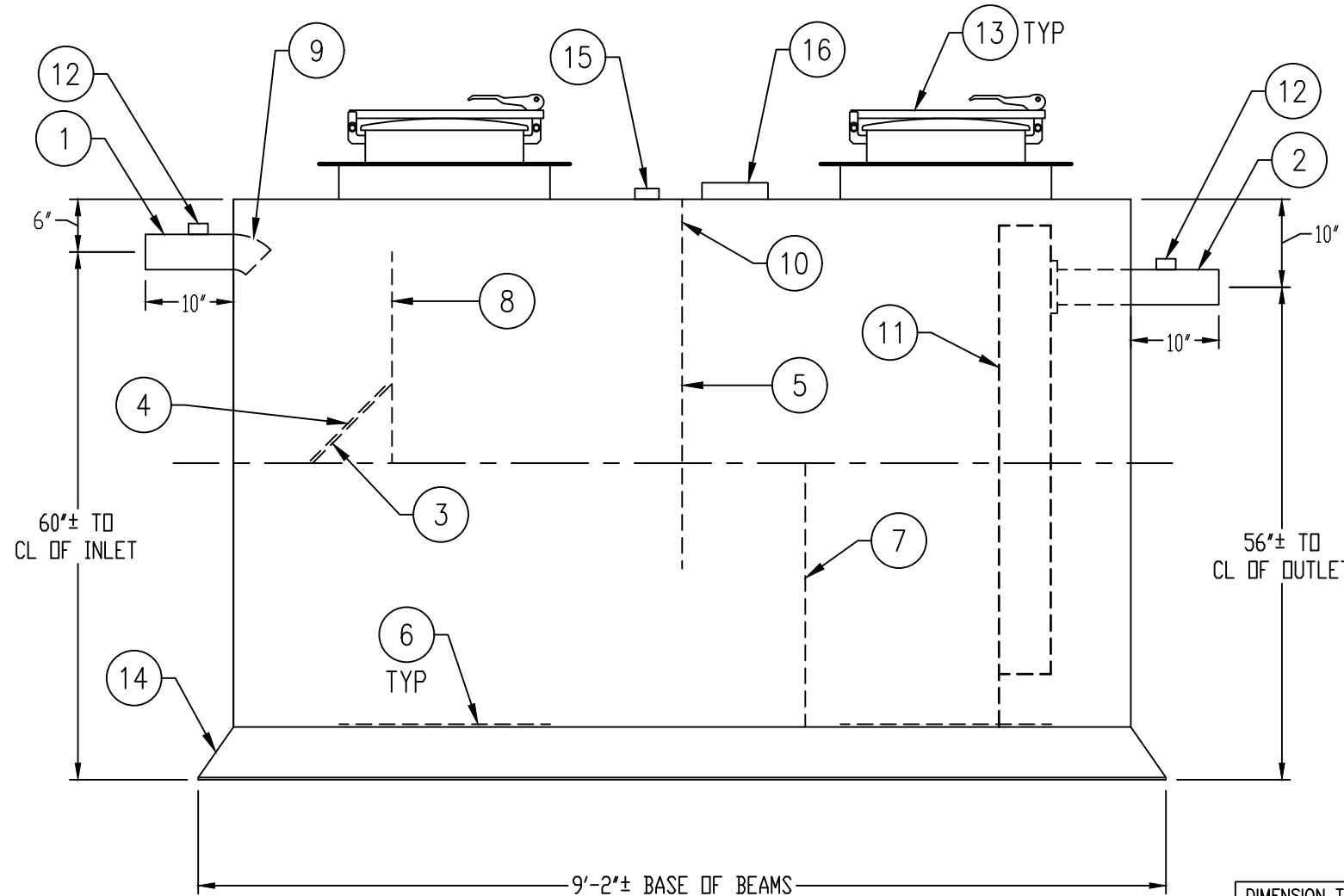
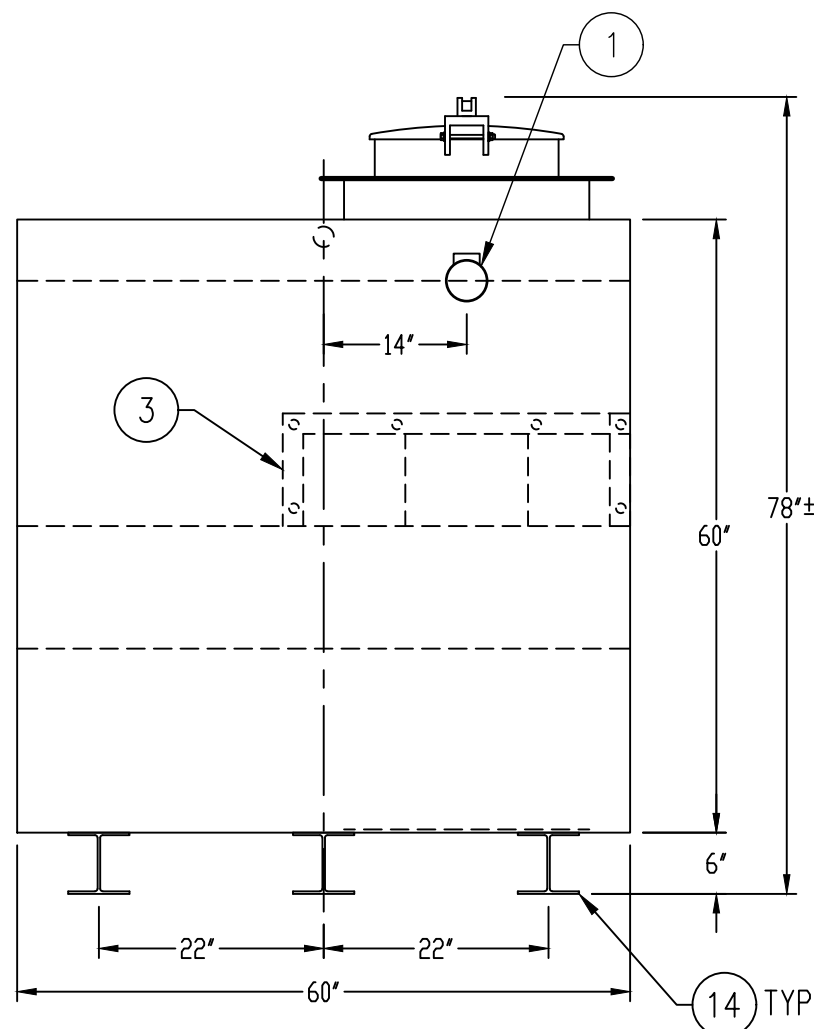


1-1/8"Ø ANCHORING HOLE - TYP



MANWAYS OFFSET FOR EASE OF ACCESS - FLOW DIRECTION CAN BE REVERSED



GENERAL SPECIFICATIONS

QUANTITY: ONE (1)
MODEL: PGI-1250-2 AR
CAPACITY: 1,250 GALLONS
TYPE: SINGLE WALL, ABOVEGROUND
MATERIAL: 7 GA CARBON STEEL WITH 1/4" BOTTOM
LAP FIT AND WELD INTERIOR AND EXTERIOR SEAMS
SURFACE PREP: SSPC-SP 10 BLAST INTERIOR SURFACES
SSPC-SP 6 BLAST EXTERIOR SURFACES
EXT. COATING: WHITE URETHANE - 3-5 MILS
INT. COATING: CHEMLINE 4200 PW (15 MILS DFT)
OPERATING PRESSURE: ATMOSPHERIC
GREASE HOLDING CAPACITY: 3,789 LBS

PROVIDED EQUIPMENT

- 4"Ø SCH 40 PIPE STUB - INLET
- 4"Ø SCH 40 PIPE STUB - OUTLET
- REMOVABLE DIFFUSION PLATE - 7 GA
- 12" x 12" WEAR PLATE - 1/4"
- GREASE DAM - 7 GA
- STRIKER PLATE
- SLUDGE BAFFLE - 7 GA
- UNDERFLOW BAFFLE - 7 GA
- 4"Ø 45° DIFFUSION ELBOW
- 2"Ø OPENING FOR AIR CIRCULATION
- STEEL OUTLET DOWNCOMER BAFFLE WITH OPEN TOP
- 2" HC - VENT
- 24"Ø MANWAY WITH 18" EASY-ACCESS HATCH
- (3) W6x15 BEAM RUNNER WITH (3) 1-1/8" HOLES AT EACH TAPERED END FOR ANCHORING
- 2" HC - NORMAL TANK VENT
- 6" HC FOR EMERGENCY VENT

THIS DRAWING IS SUBJECT TO CHANGE AT THE DISCRETION OF THE MANUFACTURER. CONTACT HIGHLAND TANK FOR THE MOST UP-TO-DATE INFORMATION AND DRAWINGS OF OUR PRODUCTS.

NOTE:
ALL RIGHTS RESERVED. THIS DRAWING, OR ANY PART THEREOF, MUST NOT BE REPRODUCED IN ANY FORM WITHOUT WRITTEN PERMISSION FROM HIGHLAND TANK. UNLESS OTHERWISE NOTED, HIGHLAND TANK SHALL BE RESPONSIBLE ONLY FOR ITEMS INDICATED ON THIS FABRICATION DRAWING. THE CUSTOMER IS RESPONSIBLE FOR VERIFYING THE CORRECTNESS OF THE TYPE, SIZE, AND LOCATION OF ALL FITTINGS, ACCESSORIES, AND COATINGS SHOWN ON THIS DRAWING.



PASSIVE GREASE INTERCEPTOR
PGI-1250-2 AR

CUSTOMER:

PROJECT:

QUOTE NO.:

SCALE: DATE: DWG. BY: DWG. NO.:

NTS 10/31/23 MGS PGI-1250-2 AR

DIMENSION TOLERANCE: ± 1"