

CUSTOMER APPROVAL

THE CUSTOMER HAS REVIEWED THIS
DRAWING AND VERIFIED THE ACCURACY OF
ALL INFORMATION AND DIMENSIONS.

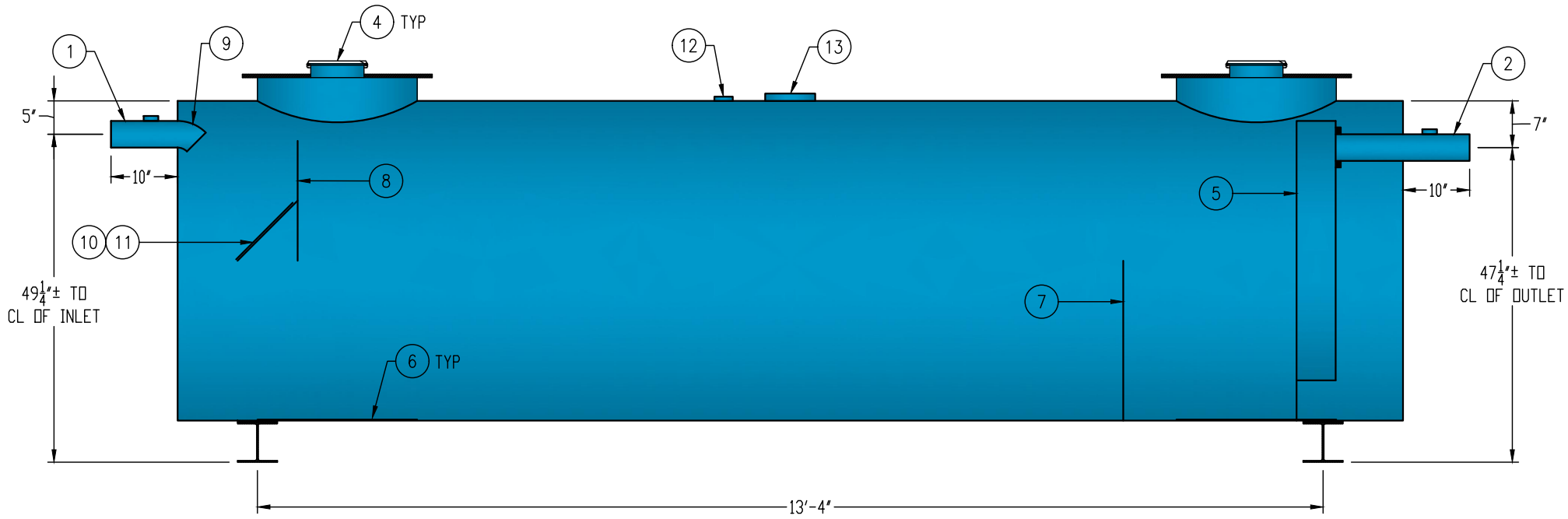
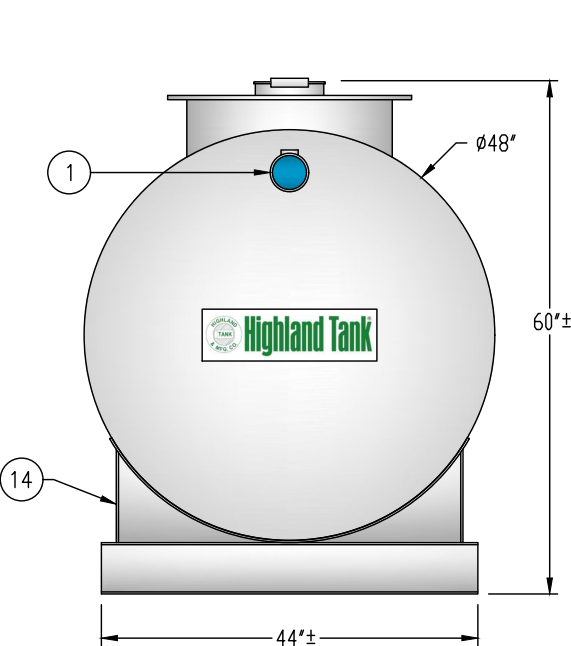
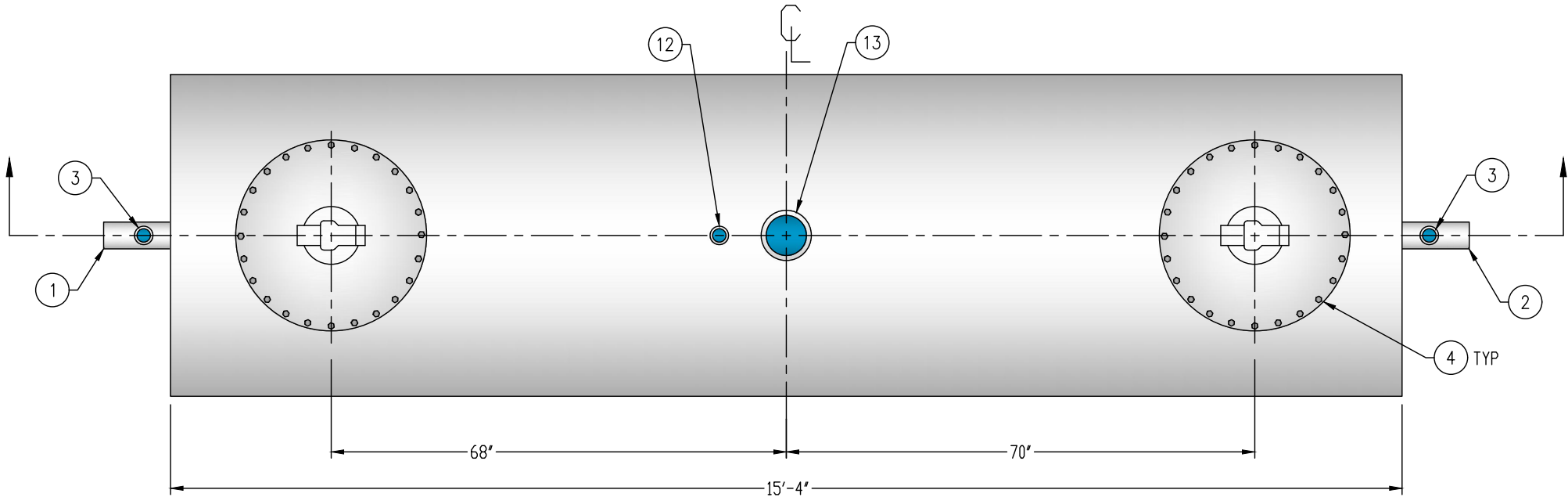
SIGNED: _____

DATE: _____

GENERAL SPECIFICATIONS

QUANTITY: ONE (1)
MODEL: PGI-1250-1 AC
OPERATING CAPACITY: 1,254 GALLONS
TYPE: SINGLE WALL, ABOVEGROUND
MATERIAL: 7 GA CARBON STEEL
LAP FIT AND WELD INTERIOR AND EXTERIOR SEAMS
TANK TEST: 3-5 PSI AIR TEST
SURFACE PREP: SSPC-SP 10 BLAST INTERIOR SURFACES
SSPC-SP 6 BLAST EXTERIOR SURFACES
EXT. COATING: WHITE URETHANE - 3-5 MILS
INT. COATING: CHEMTHANE 4200 PW (15 MILS DFT)
OPERATING PRESSURE: ATMOSPHERIC

- PROVIDED EQUIPMENT
1. 4"Ø SCH 40 PIPE STUB - INLET
 2. 4"Ø SCH 40 PIPE STUB - OUTLET
 3. 2" HC - VENT
 4. 24"Ø MANWAY WITH 8" EASY-ACCESS HATCH
 5. 6" SQUARE STEEL OUTLET BAFFLE WITH OPEN TOP
 6. STRIKER PLATE
 7. SLUDGE BAFFLE - 7 GA
 8. UNDERFLOW BAFFLE - 7 GA
 9. 4"Ø 45° DIFFUSION ELBOW
 10. REMOVABLE DIFFUSION PLATE - 7 GA
 11. 12" x 12" WEAR PLATE - 1/4"
 12. 2" HC - NORMAL TANK VENT
 13. 6" HC - EMERGENCY VENT
 14. 6" HIGH STEEL SADDLE - SEAL-WELD TO TANK



SECTION VIEW

NOTE:
ALL RIGHTS RESERVED. THIS DRAWING, OR ANY PART THEREOF, MUST NOT
BE REPRODUCED IN ANY FORM WITHOUT WRITTEN PERMISSION FROM
HIGHLAND TANK. UNLESS OTHERWISE NOTED, HIGHLAND TANK SHALL BE
RESPONSIBLE ONLY FOR ITEMS INDICATED ON THIS FABRICATION DRAWING.
THE CUSTOMER IS RESPONSIBLE FOR VERIFYING THE CORRECTNESS OF
THE TYPE, SIZE, AND LOCATION OF ALL FITTINGS, ACCESSORIES, AND
COATINGS SHOWN ON THIS DRAWING.



PASSIVE GREASE INTERCEPTOR
1,250 GALLON SINGLE-BASIN

CUSTOMER: _____

PROJECT: _____

QUOTE NO.: _____ ORDER: _____

SCALE: DATE: DWG. BY: DWG. NO.:
NTS 4/1/19 MGS PGI-1250-1 AC

DIMENSION TOLERANCE: ± 1"