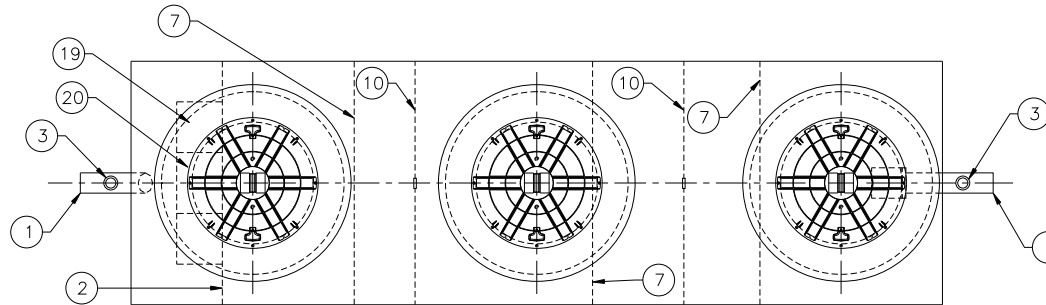


NOTE: BUOYANCY RESTRAINT NOT SHOWN
CUSTOMER TO ADDRESS BEFORE INSTALLATION
CONTACT HIGHLAND TANK FOR OPTIONS

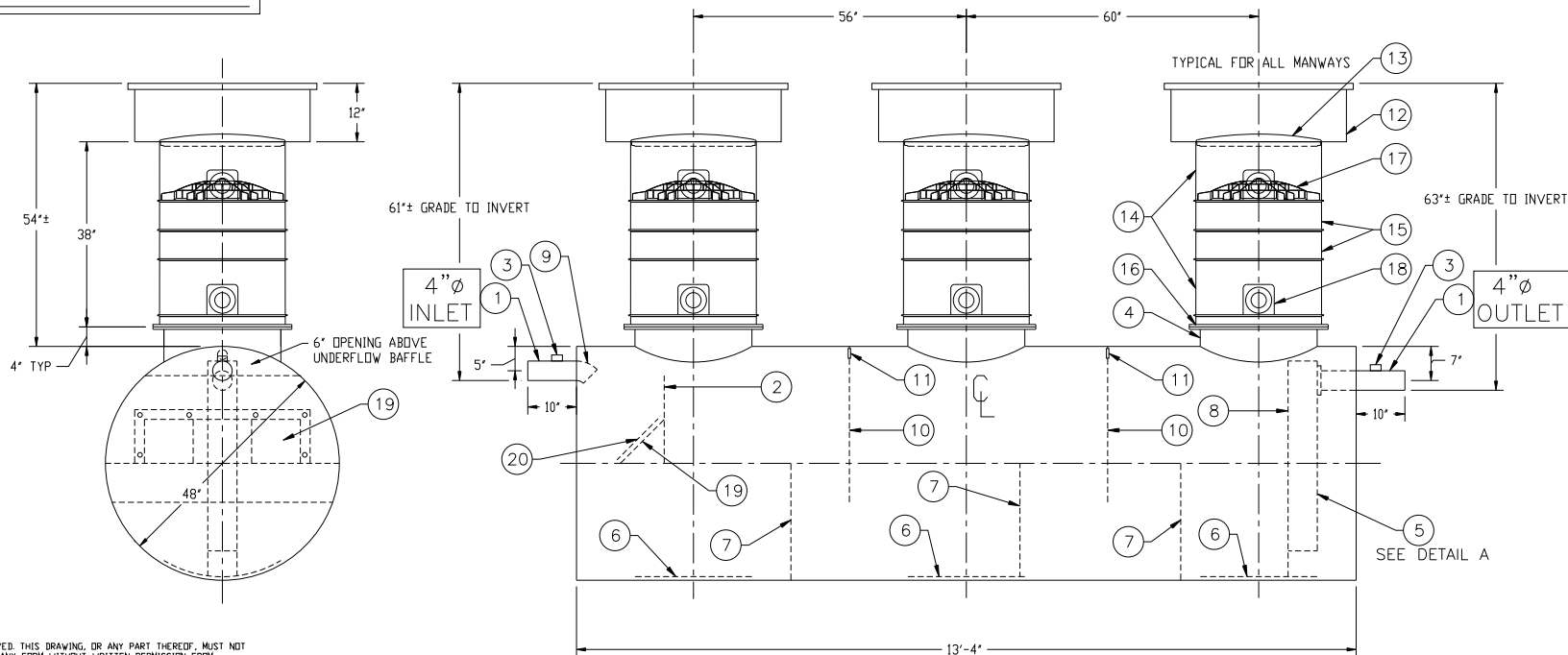


CUSTOMER APPROVAL

THE CUSTOMER HAS REVIEWED THIS
DRAWING AND VERIFIED THE ACCURACY OF
ALL INFORMATION AND DIMENSIONS.

SIGNED: _____

DATE: _____



GENERAL SPECIFICATIONS

QUANTITY: ONE (1)
MODEL: PGI-1250-3
NOMINAL CAPACITY: 1,250 GALLONS
STATIC WATER CAPACITY: 1,090.6 GALLONS
TYPE: SINGLE WALL, HIGHGUARD, UNDERGROUND
MATERIAL: MILD CARBON STEEL
GAUGE OF SHELL: 7 GA
GAUGE OF HEADS: 7 GA
GAUGE OF MATERIAL BASED ON MAXIMUM BURIAL DEPTH OF 60"
LAP FIT AND WELD INTERIOR AND EXTERIOR SEAMS
SURFACE PREP: SSPC-SP 10 BLAST INTERIOR SURFACES
SSPC-SP 6 BLAST EXTERIOR SURFACES
COATING, EXTERIOR: HIGHGUARD POLYURETHANE-75 MILS
COATING, INTERIOR: POLYURETHANE - 15 MILS
OPERATING PRESSURE: ATMOSPHERIC
APPROXIMATE DRY WEIGHT: 1,800 LBS
NOTE: MINIMUM OF ONE 2" VENT PIPE MUST BE INSTALLED IN EACH MANWAY RISER

PROVIDED EQUIPMENT

1. 4"Ø SCH 40 PIPE STUB W/ 2" NPT FTG FOR VENT
2. UNDERFLOW BAFFLE - 7 GA
3. 2" NPT FTG FOR VENT
4. 24"Ø MANWAY FOR STACKABLE RISER
5. STEEL OUTLET DOWNCOMER BAFFLE W/ OPEN TOP FOR EFFLUENT SAMPLING
6. 1/4" STRIKER PLATE (AT ALL MANWAYS)
7. SLUDGE BAFFLE - 7 GA
8. VELOCITY DIFFUSION BREAKER
9. 4"Ø 45° DIFFUSION ELBOW
10. GREASE DAM - 7 GA
11. 2" OPENING FOR AIR CIRCULATION
12. 36"Ø GRADE-LEVEL MANWAY - SHIPPED LOOSE
13. 24"Ø PVC COVER
14. 24"Ø x 12" STACKABLE RISER - ALL STACKABLE RISER COMPONENTS ARE PRE-ASSEMBLED AND COMPLETE MANWAY RISER IS SHIPPED LOOSE
15. 24"Ø x 6" STACKABLE RISER
16. STACKABLE RISER ADAPTER RING & GASKET
17. STACKABLE RISER SAFETY SCREEN
18. KNOCKOUT FOR VENT PIPING - (4) KNOCKOUTS PER EACH 12" RISER SECTION
19. REMOVABLE DIFFUSION BAFFLE -1/4"
20. 12" x 12" WEAR PLATE -1/4"



REVISIONS



Highland Tank®

PASSIVE GREASE INTERCEPTOR
1,250 GALLON - TRIPLE BASIN

CUSTOMER:

PROJECT:

QUOTE NO:

SCALE: NTS

DATE: 8/31/12

BY: MGS

DWG NO:

PGI-1250-3

CHK'D BY:

DIMENSION TOLERANCE: ± 1"

DATE: 8/31/12

BY: MGS

DWG NO:

PGI-1250-3

CHK'D BY:

DATE: 8/31/12

BY: MGS

DWG NO:

PGI-1250-3

CHK'D BY:

DATE: 8/31/12

BY: MGS

DWG NO:

PGI-1250-3

CHK'D BY:

DATE: 8/31/12

BY: MGS

DWG NO:

PGI-1250-3

CHK'D BY:

DATE: 8/31/12

BY: MGS

DWG NO:

PGI-1250-3

CHK'D BY:

DATE: 8/31/12

BY: MGS

DWG NO:

PGI-1250-3

CHK'D BY:

DATE: 8/31/12

BY: MGS

DWG NO:

PGI-1250-3

CHK'D BY:

DATE: 8/31/12

BY: MGS

DWG NO:

PGI-1250-3

CHK'D BY:

DATE: 8/31/12

BY: MGS

DWG NO:

PGI-1250-3

CHK'D BY:

DATE: 8/31/12

BY: MGS

DWG NO:

PGI-1250-3

CHK'D BY:

DATE: 8/31/12

BY: MGS

DWG NO:

PGI-1250-3

CHK'D BY:

DATE: 8/31/12

BY: MGS

DWG NO:

PGI-1250-3

CHK'D BY:

DATE: 8/31/12

BY: MGS

DWG NO:

PGI-1250-3

CHK'D BY:

DATE: 8/31/12

BY: MGS

DWG NO:

PGI-1250-3

CHK'D BY:

DATE: 8/31/12

BY: MGS

DWG NO:

PGI-1250-3

CHK'D BY:

DATE: 8/31/12

BY: MGS

DWG NO:

PGI-1250-3

CHK'D BY:

DATE: 8/31/12

BY: MGS

DWG NO:

PGI-1250-3

CHK'D BY:

DATE: 8/31/12

BY: MGS

DWG NO:

PGI-1250-3

CHK'D BY:

DATE: 8/31/12

BY: MGS

DWG NO:

PGI-1250-3

CHK'D BY:

DATE: 8/31/12

BY: MGS

DWG NO:

PGI-1250-3

CHK'D BY:

DATE: 8/31/12

BY: MGS

DWG NO:

PGI-1250-3

CHK'D BY:

DATE: 8/31/12

BY: MGS

DWG NO:

PGI-1250-3

CHK'D BY:

DATE: 8/31/12

BY: MGS

DWG NO:

PGI-1250-3

CHK'D BY:

DATE: 8/31/12

BY: MGS

DWG NO:

PGI-1250-3

CHK'D BY:

DATE: 8/31/12

BY: MGS

DWG NO:

PGI-1250-3

CHK'D BY:

DATE: 8/31/12

BY: MGS

DWG NO:

PGI-1250-3

CHK'D BY:

DATE: 8/31/12

BY: MGS

DWG NO:

PGI-1250-3

CHK'D BY:

DATE: 8/31/12

BY: MGS

DWG NO:

PGI-1250-3

CHK'D BY:

DATE: 8/31/12

BY: MGS

DWG NO:

PGI-1250-3

CHK'D BY:

DATE: 8/31/12

BY: MGS

DWG NO:

PGI-1250-3

CHK'D BY:

DATE: 8/31/12

BY: MGS

DWG NO:

PGI-1250-3

CHK'D BY:

DATE: 8/31/12

BY: MGS

DWG NO:

PGI-1250-3

CHK'D BY:

DATE: 8/31/12

BY: MGS

DWG NO:

PGI-1250-3

CHK'D BY:

DATE: 8/31/12

BY: MGS

DWG NO:

PGI-1250-3

CHK'D BY:

DATE: 8/31/12

BY: MGS

DWG NO:

PGI-1250-3

CHK'D BY:

DATE: 8/31/12

BY: MGS

DWG NO:

PGI-1250-3

CHK'D BY:

DATE: 8/31/12

BY: MGS

DWG NO:

PGI-1250-3

CHK'D BY:

DATE: 8/31/12

BY: MGS

DWG NO:

PGI-1250-3

CHK'D BY:

DATE: 8/31/12

BY: MGS

DWG NO:

PGI-1250-3

CHK'D BY:

DATE: 8/31/12

BY: MGS

DWG NO:

PGI-1250-3

CHK'D BY:

DATE: 8/31/12

BY: MGS

DWG NO:

PGI-1250-3

CHK'D BY:

DATE: 8/31/12

BY: MGS

DWG NO:

PGI-1250-3

CHK'D BY:

DATE: 8/31/12

BY: MGS

DWG NO:

PGI-1250-3

CHK'D BY:

DATE: 8/31/12

BY: MGS

DWG NO:

PGI-1250-3

CHK'D BY:

DATE: 8/31/12

BY: MGS

DWG NO:

PGI-1250-3

CHK'D BY:

DATE: 8/31/12

BY: MGS

DWG NO:

PGI-1250-3

CHK'D BY:

DATE: 8/31/12

BY: MGS

DWG NO:

PGI-1250-3

CHK'D BY:

DATE: 8/31/12

BY: MGS