

NOTE :
ALL RIGHTS RESERVED. THIS DRAWING OR ANY PART THEREOF MUST NOT BE REPRODUCED IN ANY FORM WITHOUT THE WRITTEN PERMISSION OF HIGHLAND TANK.
HIGHLAND TANK SHALL BE RESPONSIBLE ONLY FOR ITEMS INDICATED ON THIS FABRICATION DRAWING UNLESS OTHERWISE NOTED. CUSTOMER IS RESPONSIBLE FOR VERIFYING CORRECTNESS OF SIZE / LOCATION OF FITTINGS , ACCESSORIES & COATINGS SHOWN ON THIS DRAWING

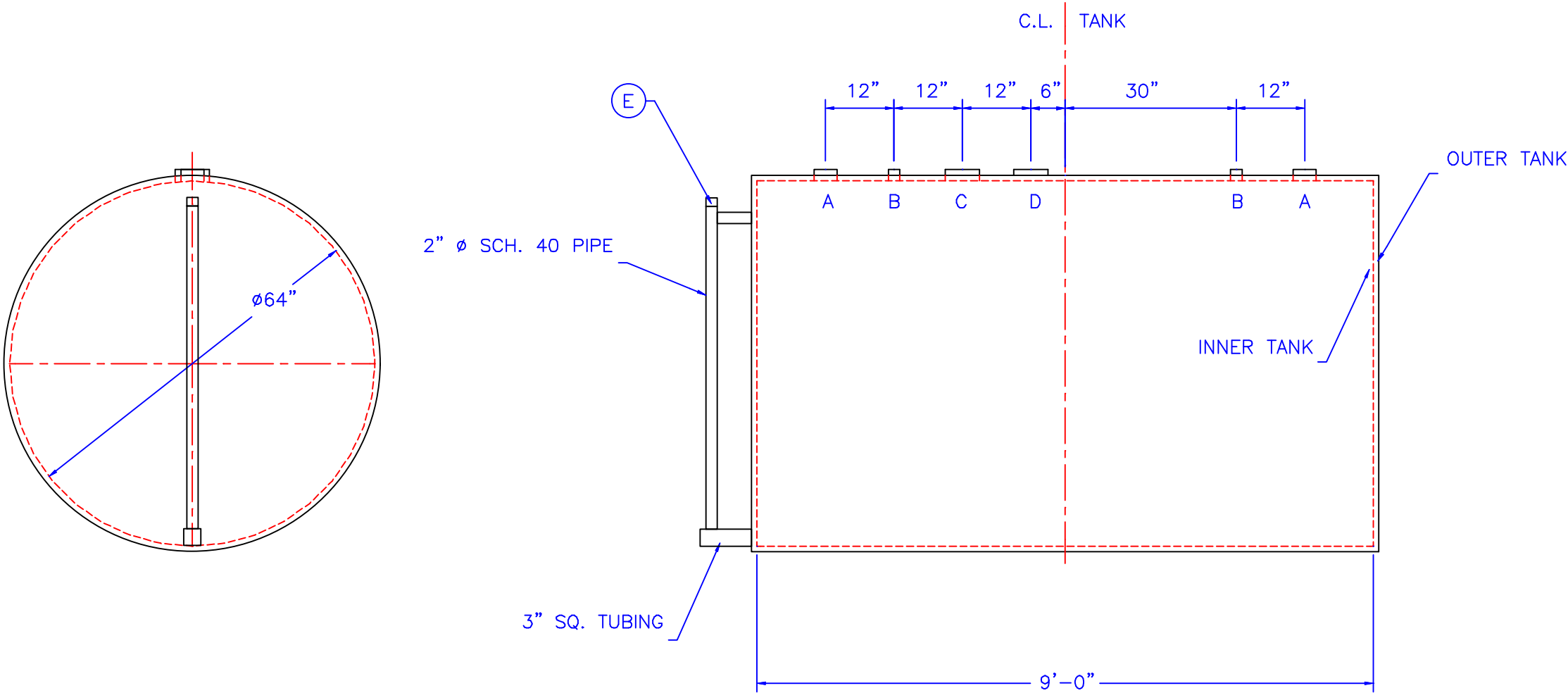
FITTING SCHEDULE

- A= 4" Ø NPT
- B= 2" Ø NPT
- C= 6" Ø NPT (PRIMARY EMERGENCY VENT)
- D= 6" Ø NPT (SECONDARY EMERGENCY VENT)
- E= 2" Ø NPT (FTG. FOR LEAK DETECTION)

GENERAL NOTES

CAPACITY : 1500 GALLONS
TYPE : I 360 DOUBLE WALL, ABOVEGROUND HORIZONTAL
NO. REQ. :
MATERIAL : MILD CARBON STEEL
TEST : 5 P.S.I.
MIN. GAUGE OR THICKNESS (PER U.L. 142):

INNER HEADS : 7 GA. OUTER HEADS : 10 GA.
INNER SHELL : 7 GA. OUTER SHELL : 10 GA.
PAINT :
 INTERIOR : NONE
 EXTERIOR : RED PRIMER
CONSTRUCTION : FLAT FLANGED HEADS, LAP WELD ALL
 EXTERIOR SEAMS ONLY
APPROVED LABELS : U.L. 142



END VIEW

ELEVATION

REVISIONS				
<div><div><div><div><div></div><div>HIGHLAND TANK MFG. CO.</div></div></div><div><div><div></div><div>Highland Tank</div></div></div></div></div>				
1500 GALLON ABOVEGROUND HORIZONTAL DOUBLE WALL TYPE I 360				
CUSTOMER:				
PROJECT:				
QUOTE NO:				CHK'D BY:
SCALE:	DATE:	DWG. BY:	DWG. NO.:	
1/2"=1'-0"	5-18-99		1.5K DWI AH	