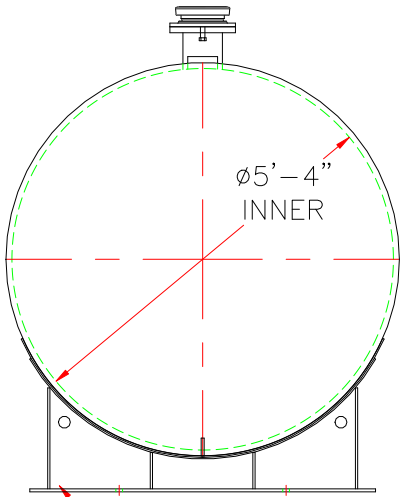


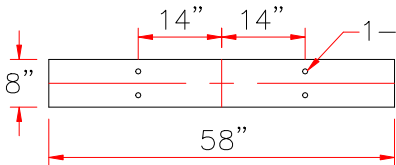
NOTE: ALL RIGHTS RESERVED. THIS DRAWING MUST NOT BE REPRODUCED IN ANY FORM WITHOUT THE WRITTEN PERMISSION OF HIGHLAND TANK®. HIGHLAND TANK® SHALL BE RESPONSIBLE ONLY FOR ITEMS INDICATED ON THIS FABRICATION DRAWING UNLESS OTHERWISE NOTED. CUSTOMER IS RESPONSIBLE FOR VERIFYING CORRECTNESS OF SIZE AND LOCATION OF FITTINGS, ACCESSORIES, AND COATINGS SHOWN ON THIS DRAWING.

TOUCH UP OF FINISHED PAINT IS REQUIRED BY INSTALLATION CONTRACTOR. TOUCH-UP PAINT SHIPPED WITH TANK.

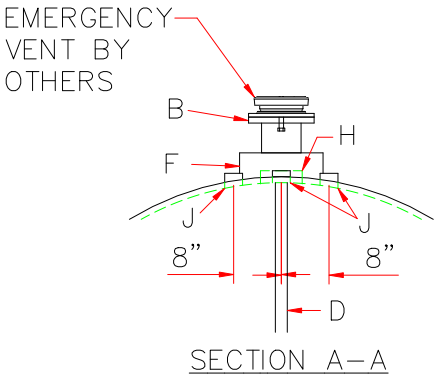
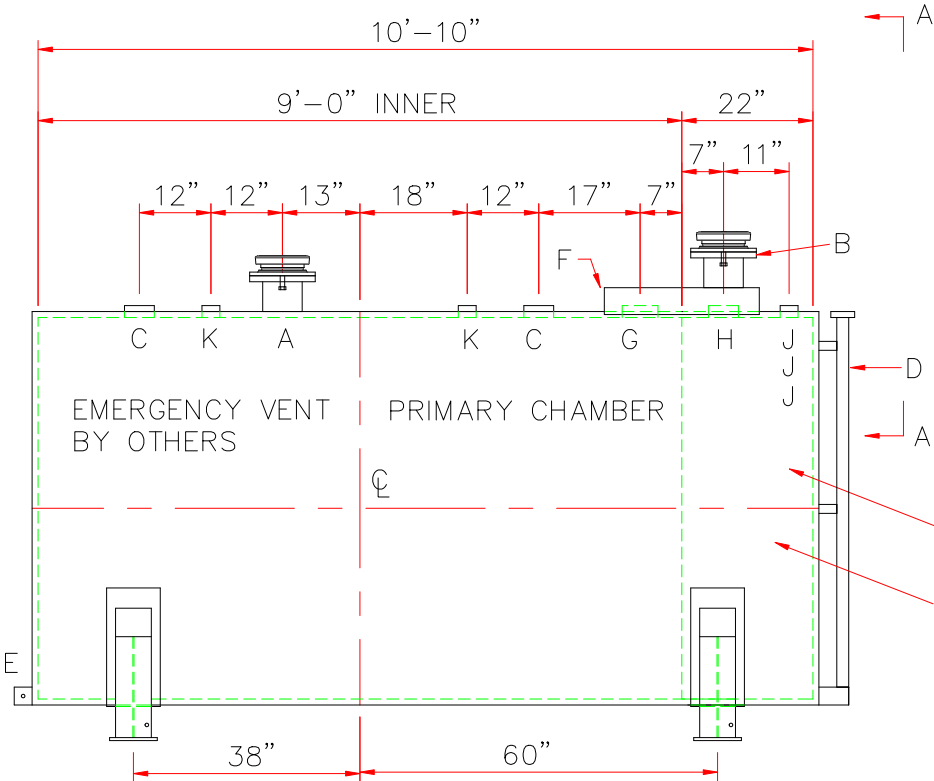
SHIPPING LUGS AS NEEDED



(2) 64"ø x 6" HIGH
UL STYLE SADDLES,
SHIP LOOSE WITH TANK.



BASE PLATE DETAIL



OP
20% OP
CHAMBER

DESIGN DATA
CAPACITY – 1,500 GALLONS
TYPE – DOUBLE WALL – TYPE I
NO. REQ. – –
OPERATING PRESSURE – ATMOSPHERIC
SPECIFIC GRAVITY = 1.0
TANK MATERIAL – MILD CARBON STEEL
THICKNESS – INNER– HEADS: 7 GA SHELL: 7 GA
THICKNESS – OUTER– HEADS: 10 GA SHELL: 10 GA
CONSTRUCTION – INNER – LAP WELD OUTSIDE ONLY
OUTER – LAP WELD OUTSIDE ONLY
TANK TEST – INNER – 5 PSIG
OUTER – +3 PSIG OR 13"hg VACUUM
INT. FINISH – NONE
EXT. FINISH – SHOP PRIMER
LABEL – UL 142

LEGEND			
A	6" FFSO 150# FLANGE THROUGH OUTER SHELL ONLY, MARK WITH SPECIAL WARNING LABEL INTERSTITIAL EMERGENCY VENT USE ONLY	F	26" LONG x 14" WIDE x 4" HIGH CLOSED TOP STEEL ENCLOSURE WELDED TO OUTER TANK
		G	6" SCH 40 PIPE
B	6" FFSO 150# FLANGE – PRIMARY EMERGENCY VENT USE	H	4" FNPT FITTING
C	4" FITTING	J	2" FNPT FITTING
D	2" INTERNAL INTERSTITIAL MONITOR PIPE	K	2" FNPT FITTING
E	3" x 3" PLATE w/ 1/2"ø (MIN.) HOLE ON CENTER (GROUNDING LUG–ONE REQ'D)		

UNLESS NOTED, TOLERANCES ARE +/- 1"			
1,500 GAL 64"ø AG DW HORIZONTAL OP®			
CUSTOMER:			
PROJECT:			
QUOTE NO:			CHK'D BY:
SCALE: 3/8"=1'-0"	DATE:	DWG. BY:	DWG. NO: 1500AHDW640P