

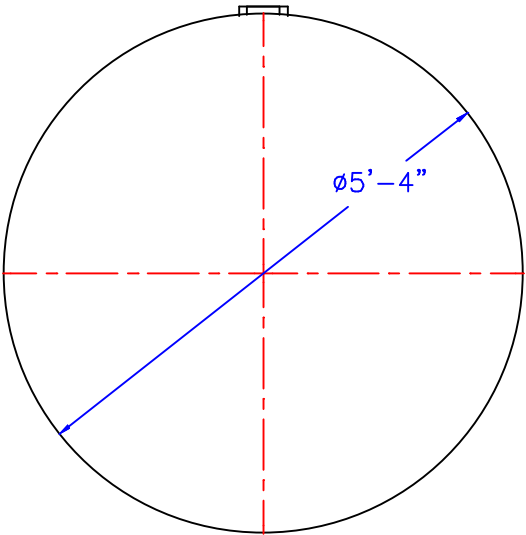
NOTE :
ALL RIGHTS RESERVED. THIS DRAWING OR ANY PART THEREOF MUST NOT BE REPRODUCED IN ANY FORM WITHOUT THE WRITTEN PERMISSION OF HIGHLAND TANK.
HIGHLAND TANK SHALL BE RESPONSIBLE ONLY FOR ITEMS INDICATED ON THIS FABRICATION DRAWING UNLESS OTHERWISE NOTED. CUSTOMER IS RESPONSIBLE FOR VERIFYING CORRECTNESS OF SIZE / LOCATION OF FITTINGS , ACCESSORIES & COATINGS SHOWN ON THIS DRAWING

FITTING SCHEDULE

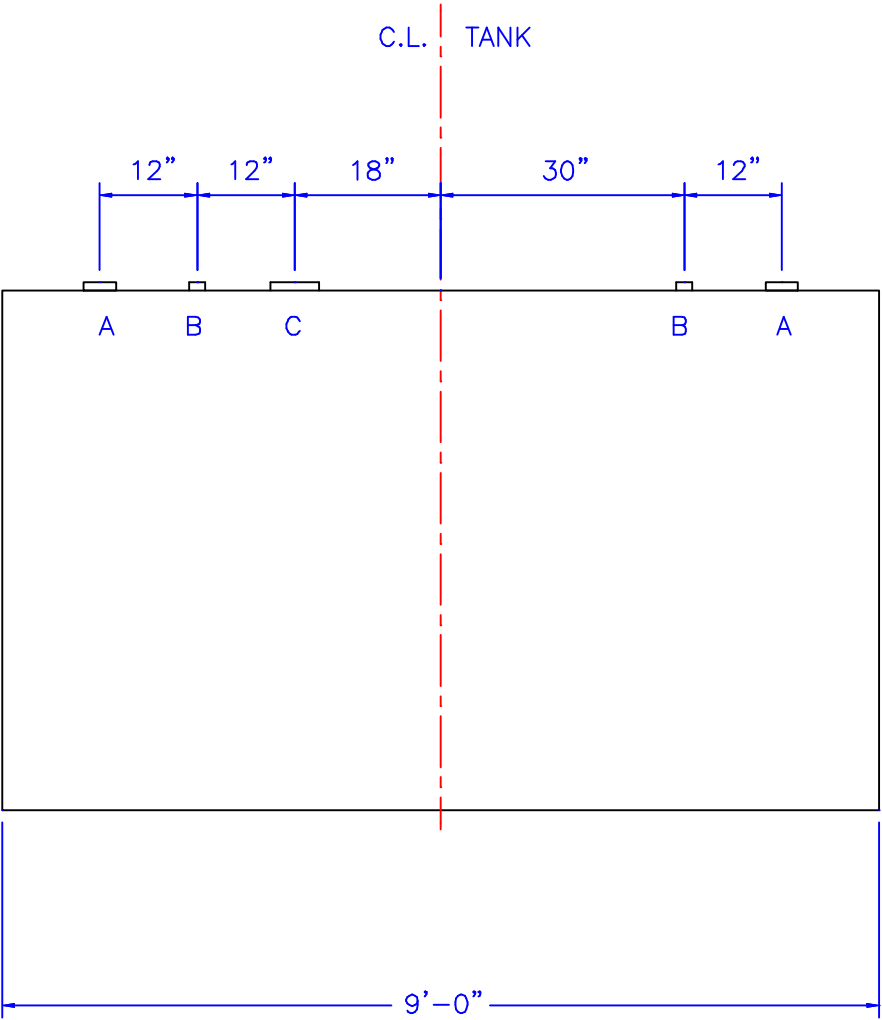
- A= 4" ∅ NPT
- B= 2" ∅ NPT
- C= 6" ∅ NPT (EMERGENCY VENT)

GENERAL NOTES

CAPACITY : 1500 GALLONS
TYPE : SINGLE WALL, ABOVEGROUND HORIZONTAL
NO. REQ. :
MATERIAL : MILD CARBON STEEL
TEST : 5 P.S.I.
MIN. GAUGE OR THICKNESS (PER U.L. 142):
HEADS : 7 GA.
SHELL : 7 GA.
PAINT :
INTERIOR : NONE
EXTERIOR : RED PRIMER
CONSTRUCTION : FLAT FLANGED HEADS, LAP WELD ALL EXTERIOR SEAMS ONLY
APPROVED LABELS : U.L. 142



END VIEW



ELEVATION

REVISIONS				
<div><div><div><div><div></div><div>HIGHLAND TANK & MFG. CO.</div></div></div><div><div><div></div><div>Highland Tank</div></div></div></div></div>				
1500 GALLON ABOVEGROUND HORIZONTAL SINGLE WALL				
CUSTOMER:				
PROJECT:				
QUOTE NO:				CHK'D BY:
SCALE:	DATE:	DWG. BY:	DWG. NO.:	
1/2"=1'-0"	5-18-99		1.5 SW AH	