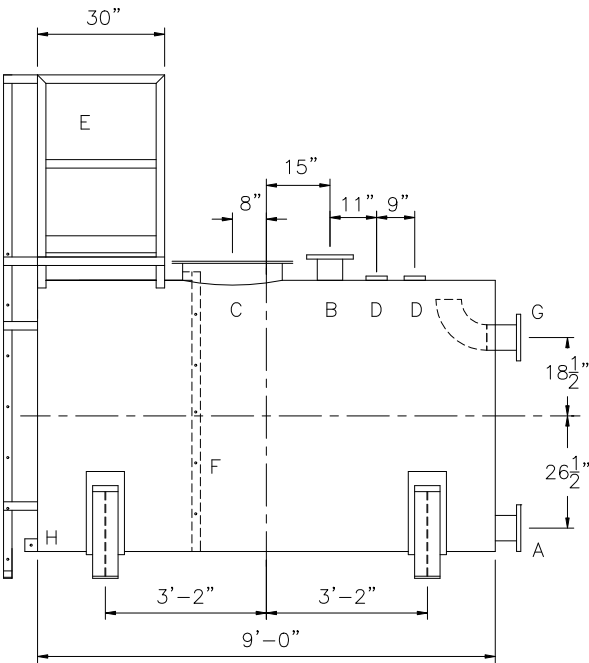
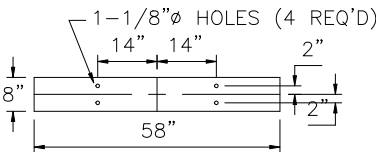



SHIPPING LUGS AS NEEDED

Technical drawing of a vertical vessel with a circular head. The drawing shows a cross-section of the vessel. The upper section is a cylinder with a diameter of 42 inches. The lower section is a circular head with a diameter of 64 inches. The head is divided into two parts: a top section with a height of 6 1/2 inches and a bottom section. The vessel is supported by a base. The drawing is labeled with 'E' and '42"'. The head diameter is labeled as 'ø 64"'. The head height is labeled as '6 1/2"'. The vessel is shown in a perspective view.

(2) 64"Ø X 6" HIGH UL  
STYLE SADDLES, SHIP  
LOOSE WITH TANK



DESIGN DATA		LEGEND	
CAPACITY – 1,500 GALLONS		A	FLANGE – SUPPLY
TYPE – POTABLE WATER TANK (PWT)		B	FLANGE – VENT
NO. REQ. – –		C	24" X 1/4" PLATE TIGHT BOLT MANWAY WITH 1/8" THICK NEO-CORK GASKET
OPERATING PRESSURE – ATMOSPHERIC		D	4" FNPT CONNECTION
SPECIFIC GRAVITY = 1.0		E	STD HTM EXTERNAL LADDER & PLATFORM ASSEMBLY – PAINTED SAFETY YELLOW AND SHIPPED LOOSE FOR INSTALLATION ON SITE BY OTHERS
TANK MATERIAL – MILD CARBON STEEL		F	HTM STD INTERNAL LADDER
THICKNESS – HEADS: 7 GA		G	FLANGE WITH INTERNAL 90° ELBOW SHOWN – OVERFLOW
THICKNESS – SHELL: 7 GA		H	FB-3"x 1/4"x3" WITH 5/8"Ø HOLE ON CL (GROUNDING LUG)
CONSTRUCTION – LAP WELD INSIDE AND OUTSIDE			
TANK TEST – 5 PSIG			
INT. FINISH – SP10 BLAST HighDRO®-LINER PLUS FOR NSF 61 APPLICATIONS			
EXT. FINISH – SSPC SP6 BLAST, WHITE URETHANE PAINT			
LABEL – NONE			

 <h1>Highland Tank</h1>	
UNLESS NOTED, TOLERANCES ARE +/- 1"	
<h2>HighDRO® WATER STORAGE TANK</h2> <p>1,500 GAL 64"Ø SINGLE-WALL ABOVEGROUND HORIZONTAL FOR POTABLE WATER WITH BOTTOM DRAIN</p>	
CUSTOMER:	
PROJECT:	
QUOTE NO:	
SCALE: 3/8" = 12"	CHK'D BY:
DATE: XX/XX/XX	DWG. NO:
DWG. BY: XXX	01500AHSWHPWTBD64