

NOTE: ALL RIGHTS RESERVED. THIS DRAWING MUST NOT BE REPRODUCED IN ANY FORM WITHOUT THE WRITTEN PERMISSION OF HIGHLAND TANK®. HIGHLAND TANK® SHALL BE RESPONSIBLE ONLY FOR ITEMS INDICATED ON THIS FABRICATION DRAWING UNLESS OTHERWISE NOTED. CUSTOMER IS RESPONSIBLE FOR VERIFYING CORRECTNESS OF SIZE AND LOCATION OF FITTINGS, ACCESSORIES, AND COATINGS SHOWN ON THIS DRAWING.

TOUCH UP OF FINISHED PAINT IS REQUIRED BY INSTALLATION CONTRACTOR. TOUCH UP PAINT SHIPPED WITH TANK.

NOTES

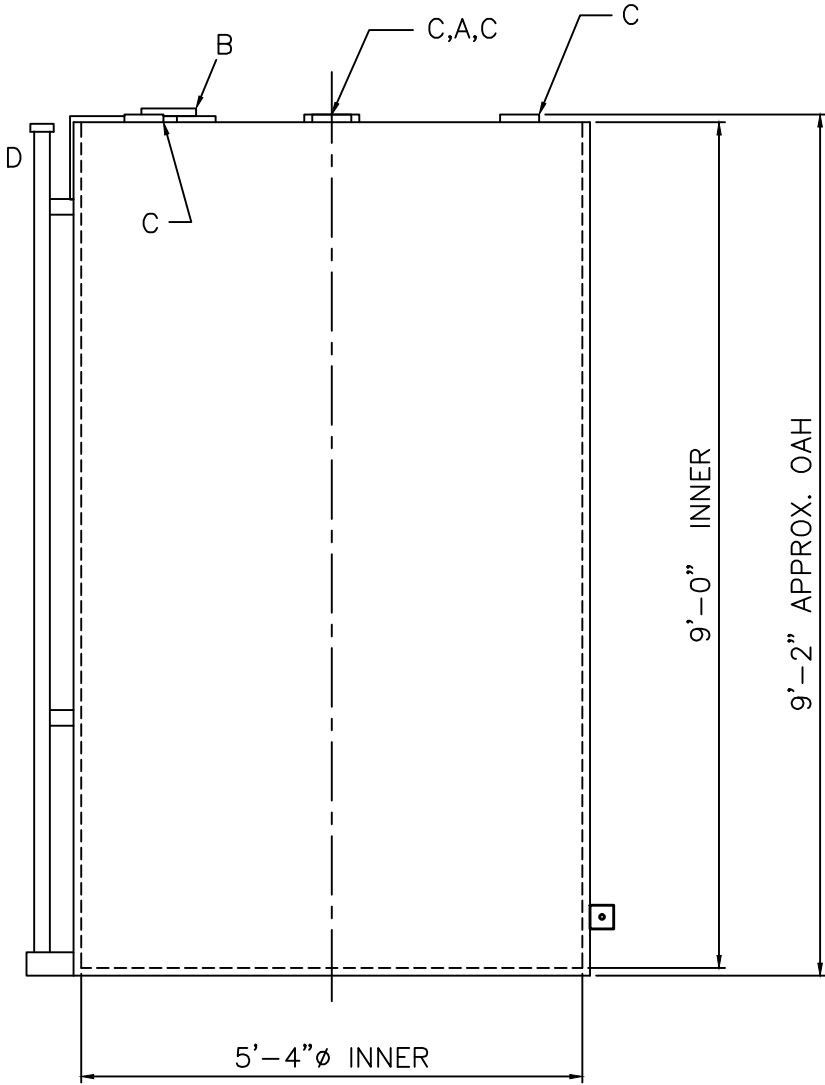
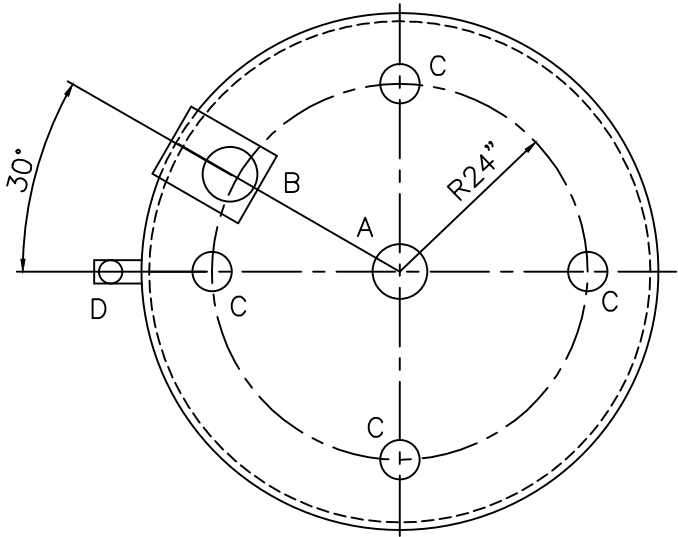
1. SEE PLAN VIEW FOR TRUE ORIENTATION AND LOCATION OF FITTING
2. LIFTING LUGS FOR UNLOADING UNIT & STANDING UNIT UPRIGHT TO BE PLACED AS NEEDED BY FABRICATION SHOP
3. A 3x3x1/4" STEEL GROUNDING LUG WITH A 5/8"Ø HOLE IN CENTER TO BE PLACED ON SHELL AT BOTTOM OF TANK IN LINE WITH LIFTING LUGS


DESIGN DATA

CAPACITY – 1,500 GALLONS
TYPE – VERTICAL DOUBLE WALL
NO. REQ. – –
OPERATING PRESSURE – ATMOSPHERIC
SPECIFIC GRAVITY = 1.0
TANK MATERIAL – MILD CARBON STEEL
THICKNESS – TOP– FLAT SINGLE WALL 10 GA
THICKNESS – INNER– SHELL: 7 GA BOTTOM: 1/4"
THICKNESS – OUTER– SHELL: 7 GA BOTTOM: 1/4"
CONSTRUCTION – LAP WELD OUTSIDE ONLY– INNER & OUTER
TOP & BOTTOM HEADS ARE FLAT FLANGED
TANK TEST – INNER: 2 PSIG, OUTER:– 2 PSIG & FULL VACUUM
INT. FINISH – NONE
EXT. FINISH – SHOP PRIMER
LABEL – UL 142

LEGEND

A	6" HALF COUP. (PRIMARY EMERGENCY VENT)
B	6" HALF COUPLING, SECONDARY EMERGENCY VENT IN INTERSTICE EXTENSION BOX, MARK w/ SPECIAL WARNING LABEL
C	4" HALF COUPLING
D	2" INTERSTITIAL MONITOR PIPE
E	–
F	



△					
		Highland Tank			
UNLESS NOTED, TOLERANCES ARE +/- 1"					
1,500 GAL 64"Ø DW VERTICAL					
CUSTOMER:					
PROJECT:					
QUOTE NO:				CHK'D BY:	
SCALE: 1/2"=1'-0"	DATE:	DWG. BY:	DWG. NO: 01500AVDW64		