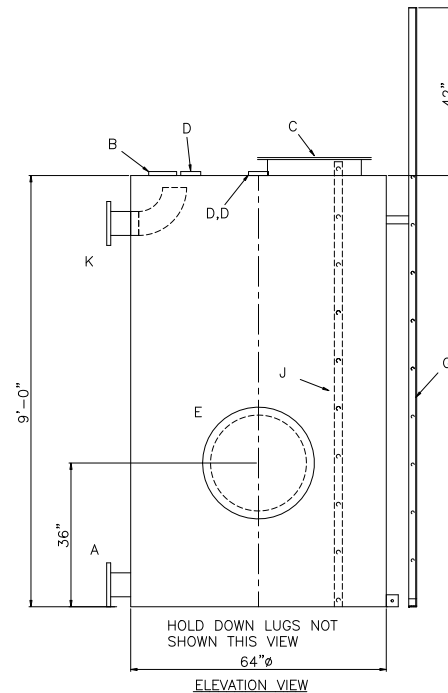
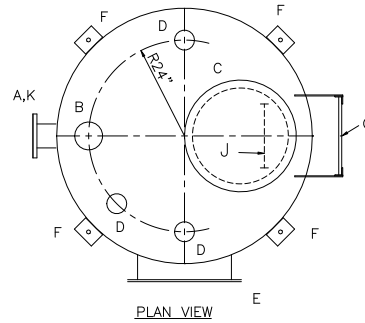


NOTE: ALL RIGHTS RESERVED. THIS DRAWING MUST NOT BE REPRODUCED IN ANY FORM WITHOUT THE WRITTEN PERMISSION OF HIGHLAND TANK. HIGHLAND TANK SHALL BE RESPONSIBLE ONLY FOR ITEMS INDICATED ON THIS FABRICATED DRAWING UNLESS OTHERWISE NOTED. CUSTOMER IS RESPONSIBLE FOR VERIFYING CORRECTNESS OF SIZE AND LOCATION OF FITTINGS, ACCESSORIES, AND COATINGS SHOWN ON THIS DRAWING.

TOUCH UP OF FINISHED PAINT IS REQUIRED BY INSTALLATION CONTRACTOR. TOUCH UP PAINT SHIPPED WITH TANK.

NOTES

1. SEE PLAN VIEW FOR TRUE ORIENTATION AND LOCATION OF FITTING
2. LIFTING LUGS FOR UNLOADING UNIT & STANDING UNIT UPRIGHT TO BE PLACED AS NEEDED BY FABRICATION SHOP
3. A 3x3x½" STEEL GROUNDING LUG WITH A ½"Ø HOLE IN CENTER TO BE PLACED ON SHELL AT BOTTOM OF TANK IN LINE WITH LIFTING LUGS



DESIGN DATA

CAPACITY - 1,500 GALLON

TYPE - SINGLE WALL ABOVEGROUND VERTICAL

NO.	REQ.	—	—
-----	------	---	---

OPERATING PRESSURE – ATMOSPHERIC

SPECIFIC GRAVITY = 1.0

TANK MATERIAL - MILD CARBON STEEL

THICKNESS - TOP: 10 GA FLAT
THICKNESS - BOTTOM: 1/4" FLAT

THICKNESS - BOTTOM: 1/4" FLAT
THICKNESS - SHELL: 7 GA

THICKNESS - SHELL: 7 GA

CONSTRUCTION - LAP WELD INSIDE & OUTSIDE

TANK TEST - 2 PSIG

TANK TEST - 2 PSIG
-

INT. FINISH - SSPC SP10 BLAST, HIGHDRO™ LINER
PLUS FOR NSF 61 APPLICATIONS

EXT. FINISH - SSPC SP6 BLAST, URETHANE PAINT OR OTHER TO BE SPECIFIED.

LABEL - NONE

LEGEND

A	FLANGE - SUPPLY
B	THREADED - VENT
C	24" X 1/4" PLATE TIGHT BOLT MANWAY WITH 1/8" THICK NEO-CORK GASKET
D	4" FNPT CONNECTION
E	24" CLOSE BOLT MANWAY WITH 1/8" THICK NEO-CORK GASKET
F	HOLD DOWN LUG - QTY VARIES PER TANK
G	STD HTM EXTERNAL LADDER - PAINTED SAFETY YELLOW AND SHIPPED LOOSE FOR INSTALLATION ON SITE BY OTHERS
H	-
J	STD HTM INTERNAL LADDER
K	FLANGE WITH INTERNALS SHOWN - OVERFLOW

