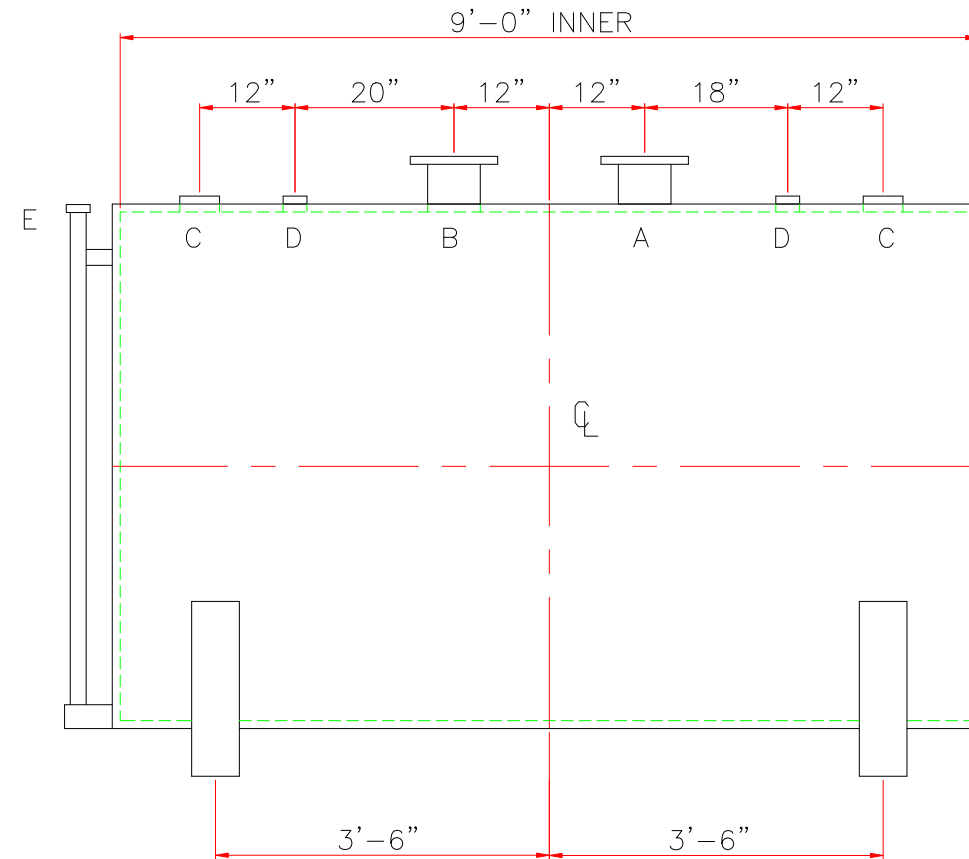
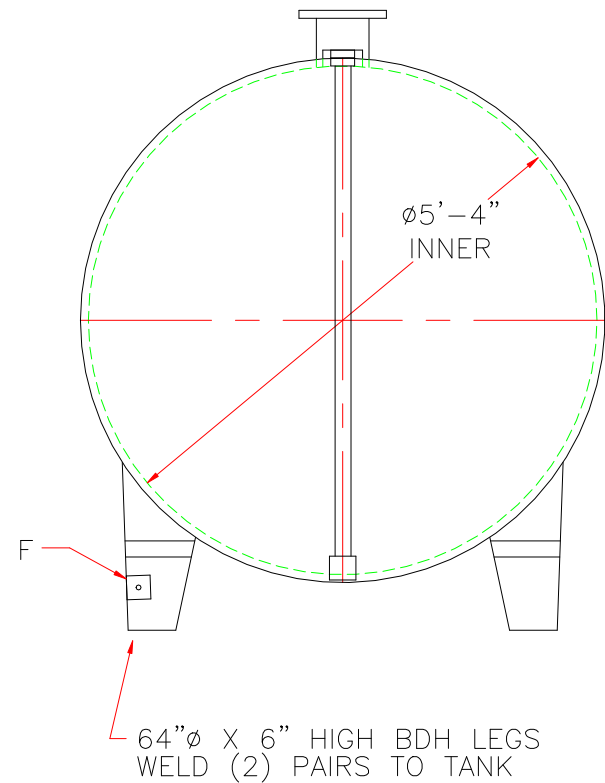


TOUCH UP OF FINISHED PAINT IS
REQUIRED BY INSTALLATION
CONTRACTOR. TOUCH UP PAINT SHIPPED
WITH TANK.



<u>DESIGN DATA</u>	
CAPACITY – 1,500 GALLONS	
TYPE – DOUBLE WALL – TYPE I	
NO. REQ. –	
OPERATING PRESSURE – ATMOSPHERIC	
SPECIFIC GRAVITY = 1.0	
TANK MATERIAL – MILD CARBON STEEL	
THICKNESS – INNER– HEADS: 7 GA	SHELL: 7 GA
THICKNESS – OUTER– HEADS: 10 GA	SHELL: 10 GA
CONSTRUCTION – INNER – LAP WELD OUTSIDE ONLY OUTER – LAP WELD OUTSIDE ONLY	
TANK TEST – INNER – 5 PSIG OUTER – +3 PSIG OR 13”hg VACUUM	
INT. FINISH – NONE –	
EXT. FINISH – SHOP PRIMER	
LABEL – UL 142	

<u>LEGEND</u>	
A	6" FFSO 150# FLANGE THROUGH OUTER SHELL ONLY, MARK WITH SPECIAL WARNING LABEL INTERSTITIAL EMERGENCY VENT USE ONLY
B	6" FFSO 150# FLANGE – PRIMARY EMERGENCY VENT USE
C	4" FITTING
D	2" FITTING
E	2" INTERSTITIAL MONITOR PIPE
F	3" x 3" PLATE w/ 1/2"ø (MIN.) HOLE ON CENTER (GROUNDING LUG– ONE REQ'D)

 <h1>Highland Tank</h1>	
UNLESS NOTED, TOLERANCES ARE +/- 1"	
1,500 GAL 64"Ø DW BDH TANK	
CUSTOMER:	
PROJECT:	
QUOTE NO:	CHK'D BY:
SCALE: 1/2" = 12"	DATE:
DWG. BY:	DWG. NO: 01500BDH64DW