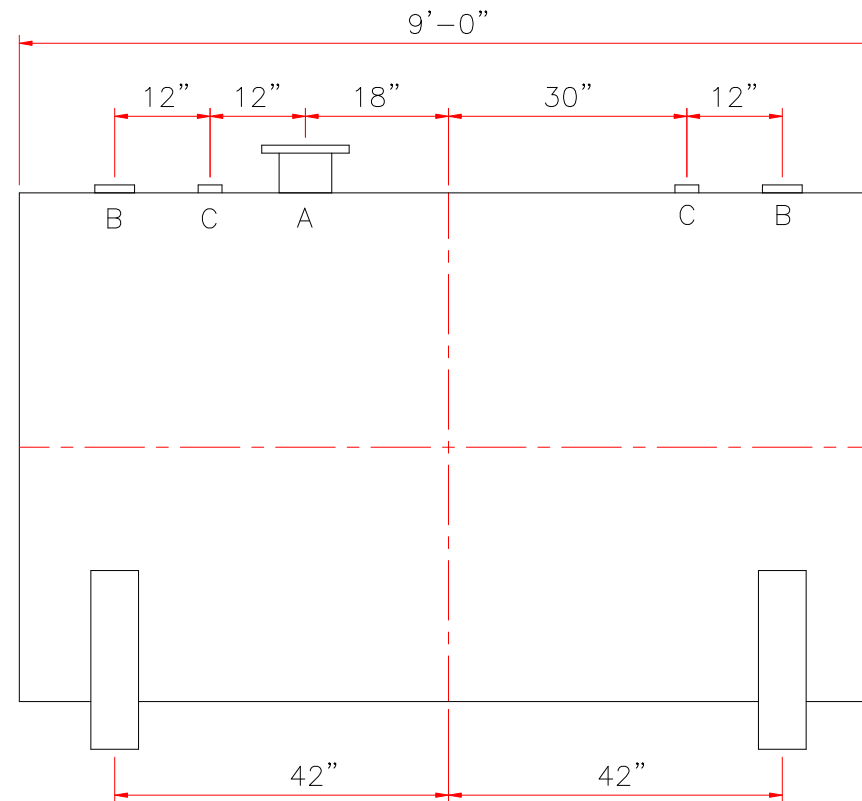
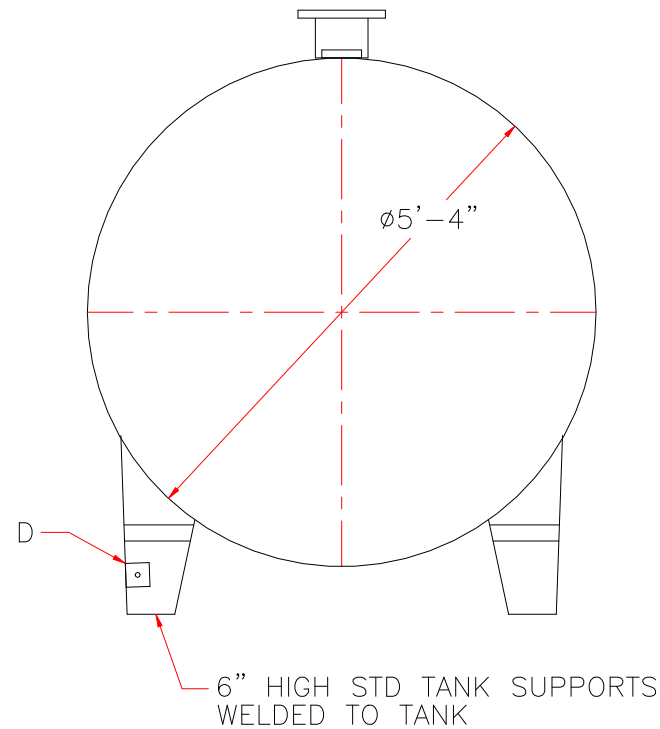


TOUCH UP OF FINISHED PAINT IS
REQUIRED BY INSTALLATION
CONTRACTOR. TOUCH UP PAINT SHIPPED
WITH TANK.



DESIGN DATA
CAPACITY – 1,500 GALLONS
TYPE – SINGLE WALL
NO. REQ. – –
OPERATING PRESSURE – ATMOSPHERIC
SPECIFIC GRAVITY = 1.0
TANK MATERIAL – MILD CARBON STEEL
THICKNESS – HEADS: 7 GA
THICKNESS – SHELL: 7 GA
CONSTRUCTION – LAP WELD OUTSIDE ONLY
TANK TEST – 5 PSIG
INT. FINISH – NONE
EXT. FINISH – SHOP PRIMER
LABEL – UL 142

<u>LEGEND</u>	
A	6" FFSO 150# FLANGE – PRIMARY EMERGENCY VENT USE
B	4" FITTING
C	2" FITTING
D	3" x 3" PLATE w/ 1/2"ϕ (MIN.) HOLE ON CENTER (GROUNDING LUG–ONE REQ'D)
E	–
F	–

		<h1>Highland Tank</h1>	
UNLESS NOTED, TOLERANCES ARE +/- 1"			
1,500 GAL 64"Ø SW BDH TANK			
CUSTOMER:			
PROJECT:			
QUOTE NO:		CHK'D BY:	
SCALE: 1/2" = 12"	DATE:	DWG. BY:	DWG. NO: 01500BDHSW64