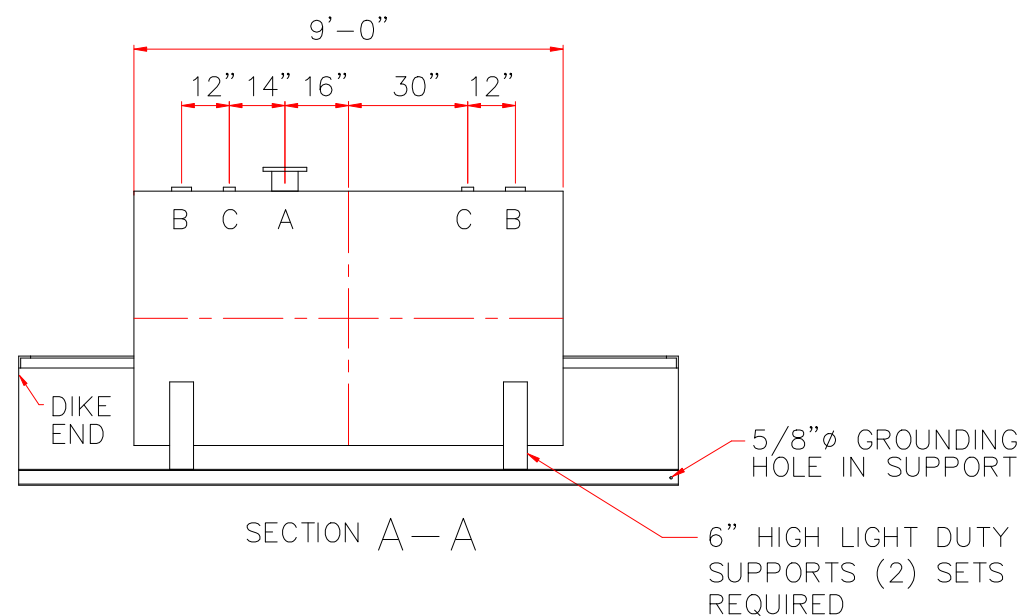


TOUCH UP OF FINISHED PAINT IS
REQUIRED BY INSTALLATION
CONTRACTOR. TOUCH UP PAINT SHIPPED
WITH TANK.



TANK DESIGN DATA
CAPACITY – 1,500 GALLONS
TYPE – ABOVEGROUND HORIZONTAL WITH 110% DIKE
NO. REQ. – –
OPERATING PRESSURE – ATMOSPHERIC
SPECIFIC GRAVITY = 1.0
TANK MATERIAL – MILD CARBON STEEL
THICKNESS – HEADS – 7 GA
THICKNESS – SHELL – 7 GA
CONSTRUCTION – LAP WELD OUTSIDE ONLY
TANK TEST – 5 PSIG
INT. FINISH – NONE
EXT. FINISH – SHOP PRIMER
LABEL – UL 142

DIKE DESIGN DATA	
CAPACITY	1,650 GALLONS
TANK MATERIAL	MILD CARBON STEEL
THICKNESS	ALL - 7 GA
CONSTRUCTION	WELDED IN & OUT
FINISH	ALL - SAME AS TANK EXTERIOR

<u>LEGEND</u>	
A	6" FFSO 150# FLANGE — PRIMARY EMERGENCY VENT USE
B	4" FITTING
C	2" FITTING
D	2" FNPT FITTING (2 REQ'D) IN OPPOSITE CORNERS OF THE DIKE
E	—

		<h1>Highland Tank</h1>	
<p>UNLESS NOTED, TOLERANCES ARE $\pm 1"$</p>			
<p>1,500 GAL 64"Ø DIKE TANK</p>			
<p>CUSTOMER:</p>			
<p>PROJECT:</p>			
<p>QUOTE NO:</p>		<p>CHK'D BY:</p>	
<p>SCALE: 1/4"=1'-0"</p>	<p>DATE:</p>	<p>DWG. BY:</p>	<p>DWG. NO: 01500DK64</p>